

# GEOMORPHOLOGY OF THE CENTRAL PO PLAIN, NORTHERN ITALY

## WESTERN SECTOR

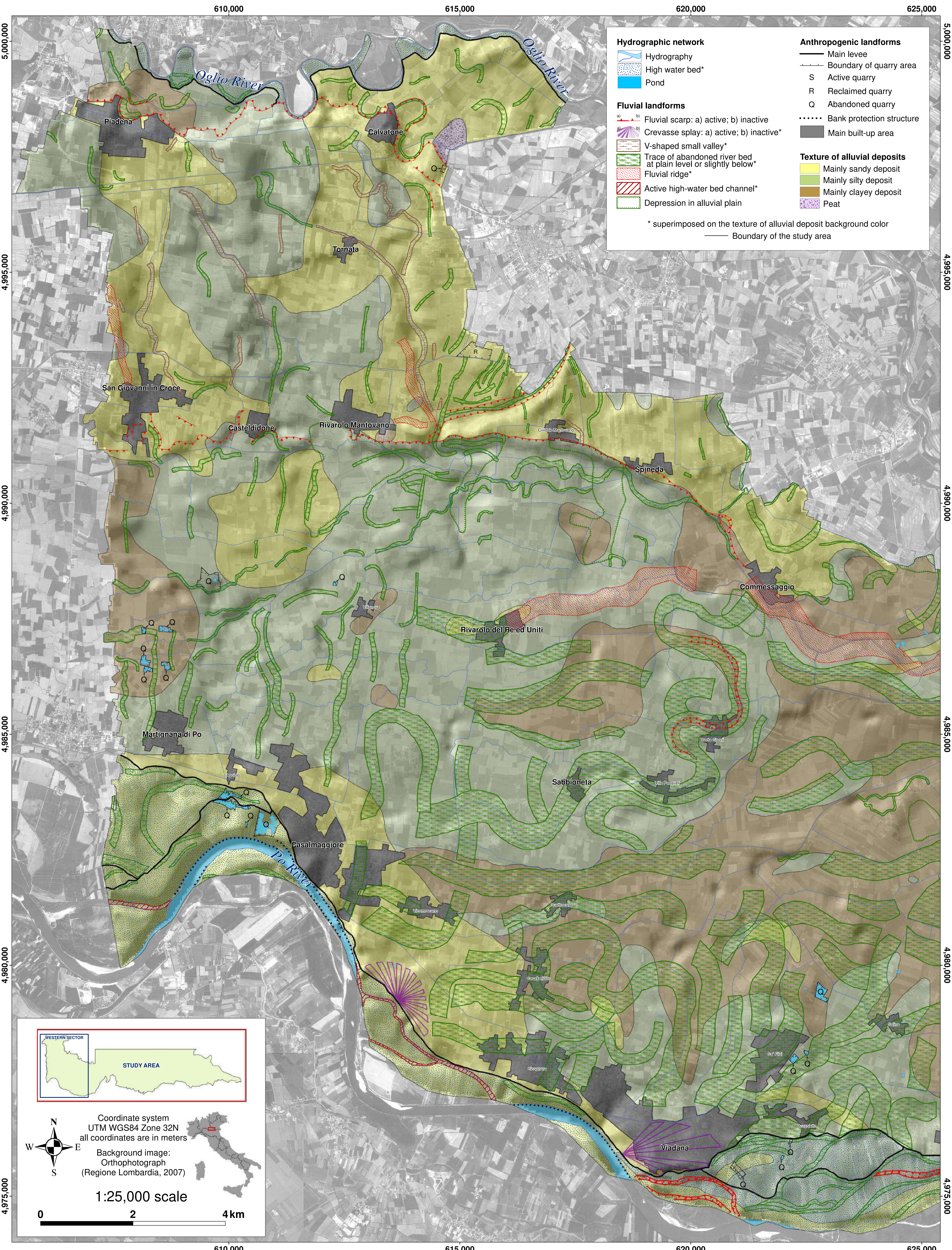
Doriano Castaldini<sup>1</sup>, Mauro Marchetti<sup>2</sup>, Gianluca Norini<sup>3</sup>, Vittoria Vandelli<sup>1</sup>, Maria Clara Zuluaga<sup>4</sup>

<sup>1</sup> Dipartimento di Scienze Chimiche e Geologiche, Università di Modena e Reggio Emilia, Italy,

<sup>2</sup> Dipartimento di Educazione e Scienze Umane, Università di Modena e Reggio Emilia, Italy,

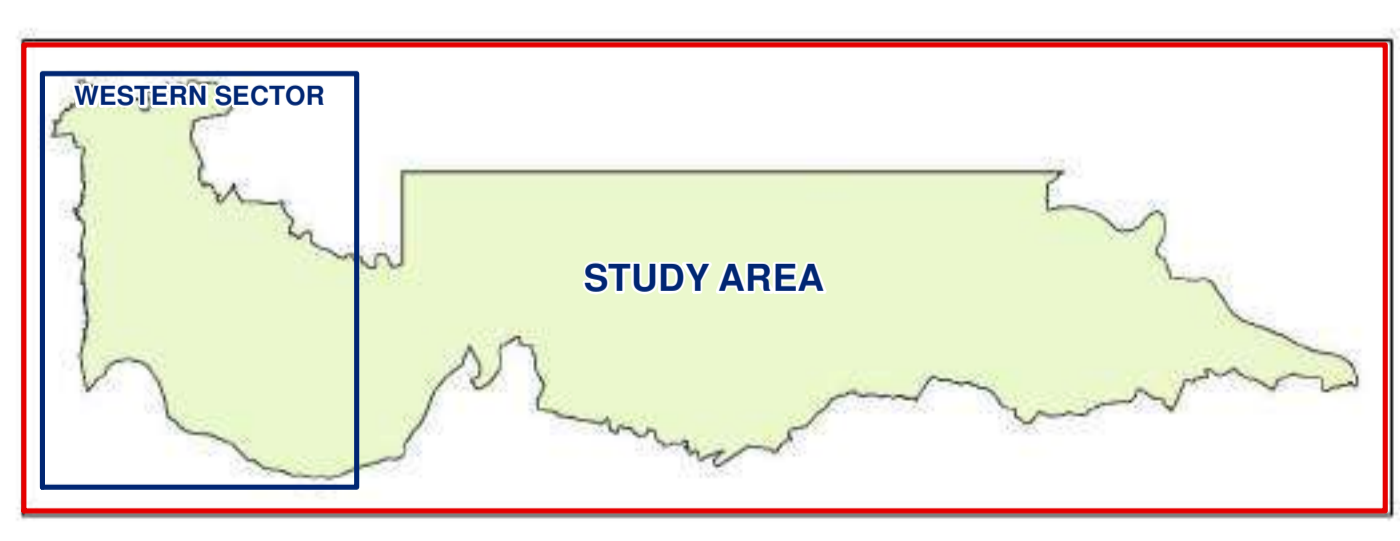
<sup>3</sup> Istituto per la Dinamica dei Processi Ambientali - Sezione di Milano, Consiglio Nazionale delle Ricerche, Milano, Italy,

<sup>4</sup> Dirección de Recursos Minerales Metálicos, Servicio Geológico Colombiano, Colombia



Hydrographic network		Anthropogenic landforms	
	Hydrography		Main levee
	High water bed*		Boundary of quarry area
	Pond	S	Active quarry
<b>Fluvial landforms</b>		R	Reclaimed quarry
	Fluvial scarp: a) active; b) inactive	Q	Abandoned quarry
	Crevasse splay: a) active; b) inactive*		Bank protection structure
	V-shaped small valley*		Main built-up area
	Trace of abandoned river bed at plain level or slightly below*	<b>Texture of alluvial deposits</b>	
	Fluvial ridge*		Mainly sandy deposit
	Active high-water bed channel*		Mainly silty deposit
	Depression in alluvial plain		Mainly clayey deposit
			Peat

\* superimposed on the texture of alluvial deposit background color  
 — Boundary of the study area



Coordinate system  
 UTM WGS84 Zone 32N  
 all coordinates are in meters

Background image:  
 Orthophotograph  
 (Regione Lombardia, 2007)

1:25,000 scale

630,000

635,000

640,000

645,000

650,000

Bagnolo San Vito

Borgoforte

San Benedetto Po

Ostio River

Po River

Po River

Motteggiana

Pegognaga

Suzzara

Gonzaga

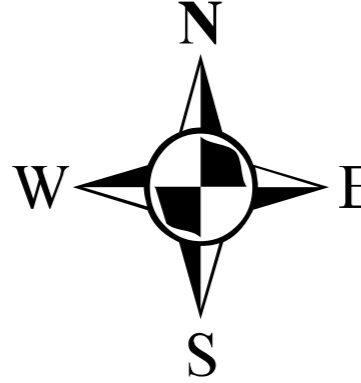
Moglia

Pomponesco

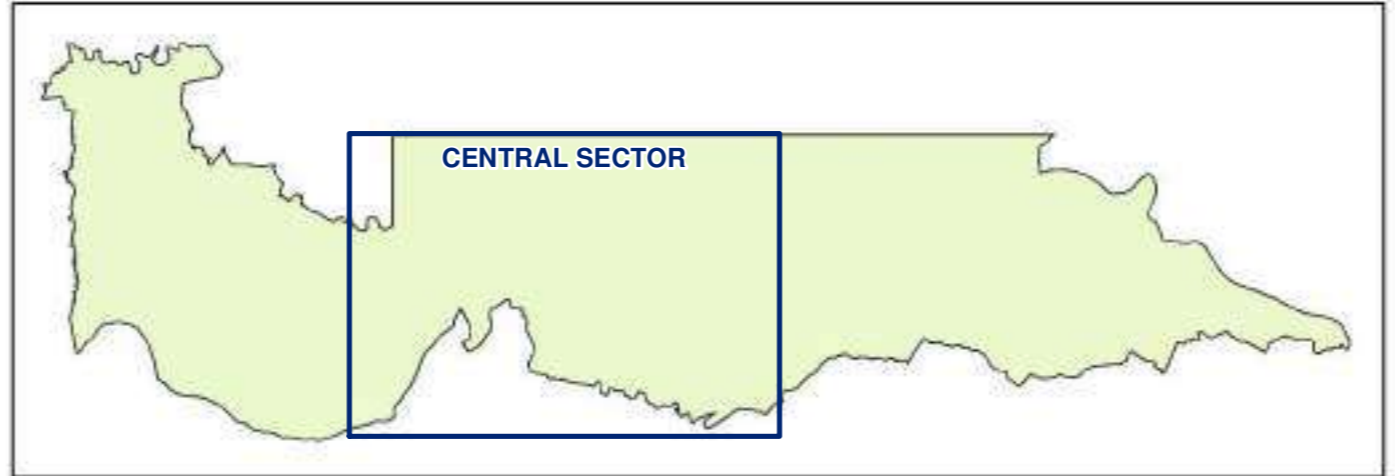
Dosolo

### GEOMORPHOLOGY OF THE CENTRAL PO PLAIN, NORTHERN ITALY CENTRAL SECTOR

D. Castaldini, M. Marchetti, G. Norini, V. Vandelli, M.C. Zuluaga



1:25,000 scale  
all coordinates are in meters



630,000

635,000

640,000

645,000

650,000

4,990,000

4,985,000

4,980,000

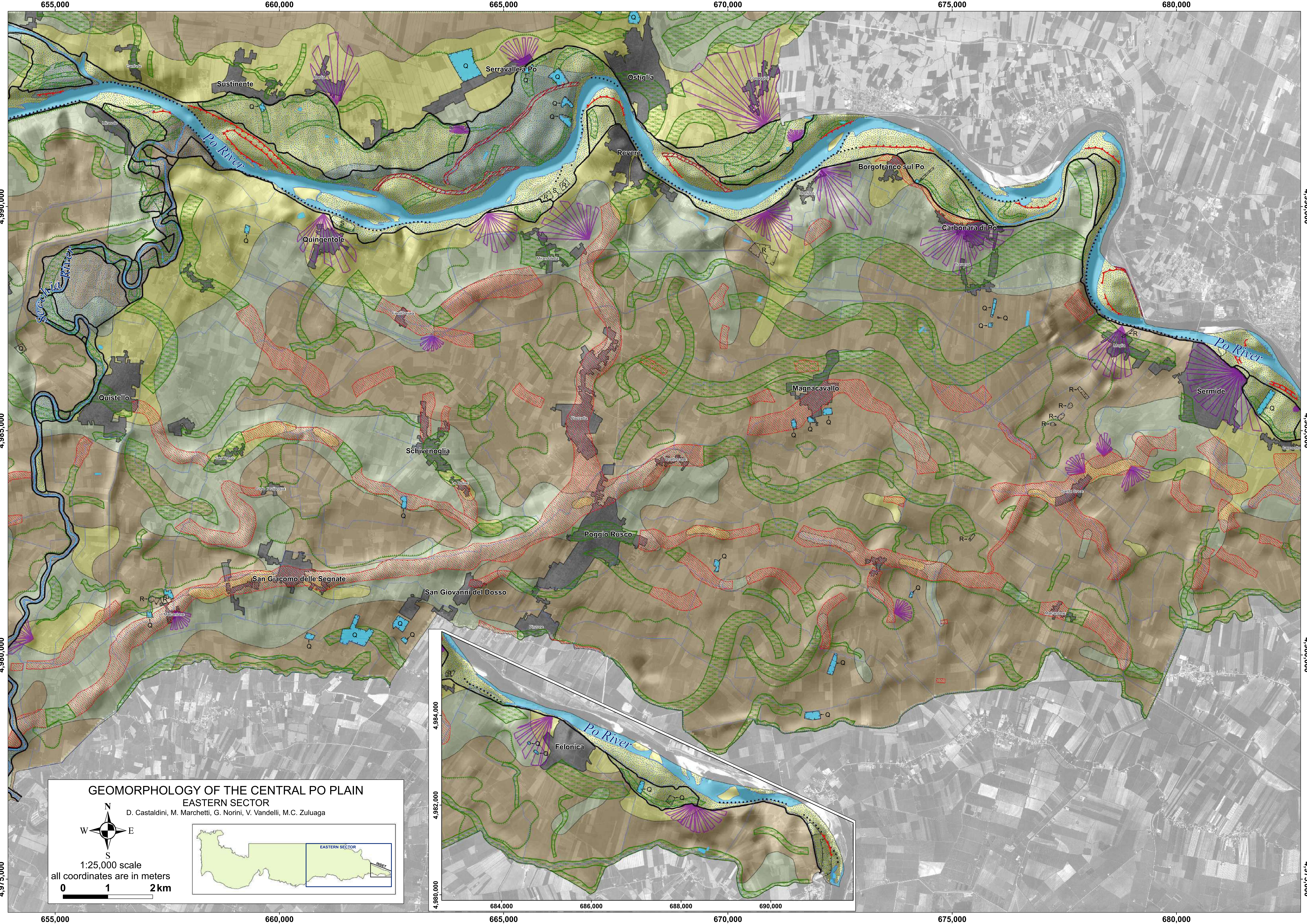
4,975,000

4,990,000

4,985,000

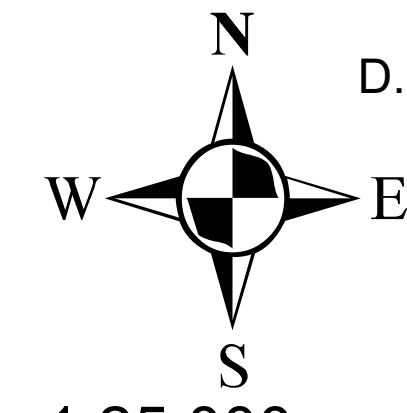
4,980,000

4,975,000



**GEOMORPHOLOGY OF THE CENTRAL PO PLAIN  
EASTERN SECTOR**

D. Castaldini, M. Marchetti, G. Norini, V. Vandelli, M.C. Zuluaga



1:25,000 scale  
all coordinates are in meters

