

This is a pre print version of the following article:

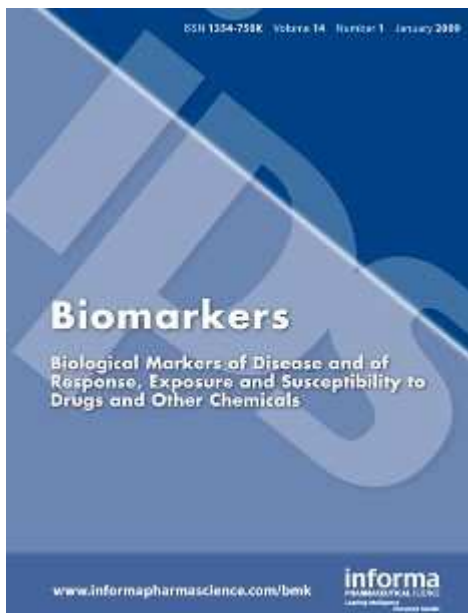
Urinary p-cresol is elevated in young French children with autism spectrum disorder: A replication study / Gabriele, Stefano; Sacco, Roberto; Cerullo, Sonia; Neri, Cristina; Urbani, Andrea; Tripi, Gabriele; Malvy, Joëlle; Barthelemy, Catherine; Bonnet-Brihault, Frédérique; Persico, Antonio M.. - In: BIOMARKERS. - ISSN 1354-750X. - 19:6(2014), pp. 463-470. [10.3109/1354750X.2014.936911]

Terms of use:

The terms and conditions for the reuse of this version of the manuscript are specified in the publishing policy. For all terms of use and more information see the publisher's website.

04/05/2026 05:31

(Article begins on next page)



Urinary p-cresol is elevated in small children with severe Autism Spectrum Disorder.

Journal:	<i>Biomarkers</i>
Manuscript ID:	TBMK-2010-0175
Manuscript Type:	Original paper
Date Submitted by the Author:	05-Oct-2010
Complete List of Authors:	Altieri, Laura; Univ. Campus Bio-Medico, Mol. Psychiatry & Neurogenetics Neri, Cristina; IRCCS Fondazione Santa Lucia, Experimental Neurosciences Sacco, Roberto; Univ. Campus Bio-Medico, Mol. Psychiatry & Neurogenetics; IRCCS Fondazione Santa Lucia, Experimental Neurosciences Curatolo, Paola; University of Rome "Tor Vergata", Child Neuropsychiatry Benvenuto, Arianna; University of Rome "Tor Vergata", Child Neuropsychiatry Muratori, Filippo; Univ. of Pisa, Child Neuropsychiatry Santocchi, Elisa; Univ. of Pisa, Child Neuropsychiatry Bravaccio, Carmela; Univ. Federico II, Pediatrics Lenti, Carlo; Univ. of Milan, Child Neuropsychiatry Saccani, Monica; Univ. of Milan, Child Neuropsychiatry Rigardetto, Roberto; Univ. of Turin, Child Neuropsychiatry Gandione, Marina; Univ. of Turin, Child Neuropsychiatry

1
2
3
4
5
6
7
8
9
10
11
12
13
14
15
16
17
18
19
20
21
22
23
24
25
26
27
28
29
30
31
32
33
34
35
36
37
38
39
40
41
42
43
44
45
46
47
48
49
50
51
52
53
54
55
56
57
58
59
60

	Urbani, Andrea; Univ. of Rome "Tor Vergata", Internal Medicine Persico, Antonio; Univ. Campus Bio-Medico, Child Neuropsychiatry; IRCCS Fondazione Santa Lucia, Experimental Neurosciences
Keywords:	Neurological disease, Metabol(n)omics, Environmental Pollution/Ecotoxicology

SCHOLARONE™
Manuscripts

For Peer Review Only

1
2
3
4
5
6
7
8
9
10
11
12
13
14
15
16
17
18
19
20
21
22
23
24
25
26
27
28
29
30
31
32
33
34
35
36
37
38
39
40
41
42
43
44
45
46
47
48
49
50
51
52
53
54
55
56
57
58
59
60

Urinary *p*-cresol is elevated in small children with severe Autism Spectrum Disorder

Laura Altieri,^{1,2} Cristina Neri,^{2,9} Roberto Sacco,^{1,2} Paolo Curatolo,³ Arianna Benvenuto,³

Filippo Muratori,⁴ Elisa Santocchi,⁴ Carmela Bravaccio,⁵ Carlo Lenti,⁶

Monica Sacconi,⁶ Roberto Rigardetto,⁷ Marina Gandione,⁷ Andrea Urbani,^{2,8} Antonio M. Persico^{1,2}

¹Laboratory of Molecular Psychiatry and Neurogenetics, University Campus Bio-Medico, Rome, Italy;

²Department of Experimental Neurosciences, I.R.C.C.S. "Fondazione S. Lucia", Rome, Italy;

³Department of Child Neuropsychiatry, University "Tor Vergata", Rome, Italy;

⁴Department of Child Neurology and Psychiatry, I.R.C.C.S. "Stella Maris" & University of Pisa, Pisa, Italy;

⁵Department of Pediatrics, University "Federico II", Naples, Italy;

⁶Department of Child Neuropsychiatry, University of Milan, Milan, Italy;

⁷Department of Child Neuropsychiatry, University of Turin, Turin, Italy;

⁸Department of Internal Medicine, University "Tor Vergata", Rome, Italy

Key terms: clostridium, cotinine, gut flora, organic contaminants

Address correspondence to Antonio M. Persico, M.D., Lab. of Molecular Psychiatry & Neurogenetics, University "Campus Bio-Medico", Via Alvaro del Portillo 21, I-00128 Rome, Italy.

Tel. +39-06-225419155; Fax +39-06-501703333; E-mail: a.persico@unicampus.it

1
2
3
4
5
6
7
8
9
10
11
12
13
14
15
16
17
18
19
20
21
22
23
24
25
26
27
28
29
30
31
32
33
34
35
36
37
38
39
40
41
42
43
44
45
46
47
48
49
50
51
52
53
54
55
56
57
58
59
60

Abstract

Context: several studies have reported a frequent overgrowth of unusual gut bacterial strains in autistic patients, able to push the fermentation of tyrosine up to the formation of *p*-cresol.

Objectives: to compare urinary *p*-cresol levels in 59 autistic patients and 59 matched controls.

Materials and Methods: *p*-cresol was measured by HPLC-UV.

Results: urinary *p*-cresol is significantly elevated in autistic children below 8 years of age ($P < 0.01$), more severely affected ($P < 0.05$), and typically females ($P < 0.05$).

Discussion: urinary cotinine measurements exclude smoking-related hydrocarbon contaminations.

Conclusion: urinary *p*-cresol may serve as a biomarker of autism liability in small children, especially in females.

Introduction

Autism Spectrum Disorder (ASD) is a neurodevelopmental disorder characterized by impairments of variable entity in social interaction and communication, associated with restricted patterns of interest and stereotyped behaviors (Filipek et al., 1999). ASD encompasses several distinct disorders currently listed in the Diagnostic and Statistical Manual of Mental Disorders, 4th edition (DSM-IV) (American Psychiatric Association, 1994), namely Autistic Disorder, Asperger Disorder and Pervasive Developmental Disorder Not Otherwise Specified (PDDNOS). Family and twin studies have shown that ASD has a significant genetic component, which follows a complex inheritance pattern likely reflecting gene-gene and gene-environment interactions (Veenstra-VanderWeele and Cook, 2004; Persico and Bourgeron, 2006; Freitag, 2007). Among environmental factors possibly contributing to clinical heterogeneity, several reports have documented in a sizable subgroup of autistic patients the overgrowth of unusual gut bacterial strains, most consistently represented by clostridial species (Finegold et al., 2002 and 2010; Song et al., 2004; Parracho et al., 2005). One of these species, *clostridium difficile*, expresses a *p*-hydroxyphenylacetate decarboxylase, able to push the fermentation of tyrosine up to the formation of *p*-cresol (Selmer and Andrei, 2001). *Pseudomonas stutzeri* forms *p*-cresol from toluene (Cafaro et al., 2005). Following intestinal absorption, *p*-cresol travels through the blood stream partly protein-bound, partly in free form; the latter is then filtered at the glomerular level and can be found in the urines of all individuals in small amounts. Whenever too abundant, as occurs in uremic patients, *p*-cresol has been convincingly shown to exert toxic effects, such as hampered phagocytic activity and enhanced endothelial permeability (Vanholder et al., 1995; De Smet et al., 2003; Cerini et al., 2004).

Two recent studies have documented elevated concentrations of compounds presumably derived from clostridial strains or other gut flora in the urines of autistic individuals (Shaw, 2010; Yap et al., 2010). To begin addressing possible pathophysiological roles of the gut in autism (White, 2003), we have measured urinary *p*-cresol concentrations in 59 autistic individuals and in 59 sex- and age-matched controls. Clinical and demographic correlates of urinary *p*-cresol levels

1
2
3 were assessed. Since urinary *p*-cresol can also stem from hydrocarbon contamination, the most
4
5 common form being active/passive smoking, urinary amounts of the nicotine metabolite, cotinine,
6
7 were also measured.
8
9

10 11 12 13 14 15 16 17 18 19 20 21 22 23 24 25 26 27 28 29 30 31 32 33 34 35 36 37 38 39 40 41 42 43 44 45 46 47 48 49 50 51 52 53 54 55 56 57 58 59 60

Methods

Patient Sample

The demographic and clinical characteristics of 59 idiopathic ASD patients recruited in Central and Northern Italy are summarized in Table 1. Demographic and clinical characteristics, as well as diagnostic screening procedures used to exclude syndromic forms have been previously described (Lintas et al., 2009). Briefly, patients fulfilling DSM-IV diagnostic criteria for Autistic Disorder, Asperger Disorder, or PDDNOS were screened for non-syndromic autism using MRI, EEG, audiometry, urinary aminoacid and organic acid measurements, cytogenetic and fragile-X testing. Patients with dysmorphic features were excluded even in the absence of detectable cytogenetic alterations. Patients with sporadic seizures (i.e., < 1 every 6 months) were included; patients with frequent seizures or focal neurological deficits were excluded. Autistic behaviors were assessed using the official Italian version of the Autism Diagnostic Observation Schedule (ADOS) (Lord et al., 2002), and of the Autism Diagnostic Interview - Revised (ADI-R) (Rutter et al., 2003), as well as the Children Autism Rating Scales (CARS) (Schopler et al., 1986); adaptive functioning was assessed using the Vineland Adaptive Behavior Scales (VABS) (Sparrow et al., 1984); I.Q. was determined using either the Griffith Mental Developmental Scales, the Coloured Raven Matrices, the Bayley Developmental Scales or the Leiter International Performance Scale.

Tight sex- and age-matching (± 1 yr) was applied to recruit 59 typically developing controls among the offspring of clinical/academic personnel. Cases and controls are all Caucasians of Italian ethnicity. All parents gave written informed consent for their children, using the consent form approved by the I.R.B. of University Campus Bio-Medico (Rome, Italy).

***P*-cresol measurement by HPLC**

Urinary *p*-cresol concentrations were measured by HPLC-UV multiwavelength DAD, adapting the method previously described by Birkett et al. (1995), and by King et al. (2009). Briefly, an aliquote of frozen urines was thawed, mixed and 30 μ L were transferred into a tube containing 60 μ L di HCl 6M and heated at 90°C for 60 minutes to hydrolyze glucuronide and sulfate conjugates. After cooling, *p*-cresol was extracted with 1 ml of diethyl ether; 300 μ L of the organic phase were then transferred into a tube with 20 μ L of NaOH 0.1N, and lyophilized. The residue was dissolved in 300 μ L of MilliQ H₂O/Acetonitrile 5% and 30 μ l were injected for HPLC analysis (Dionex Ultimate 3000 HPLC system with variable wavelength detector, column Dionex Acclaim®120 C18 5 μ m 120 A° 4,6x150 mm, temperature at 28°C and detection wavelength at 270 nm). The mobile phase consisted of A): H₂O/Acetonitrile (90/10) /TFA 0,05% and B) Acetonitrile/TFA 0,05 %. The gradient elution program was: 0-15 minute, 0-50% B; 15-17 minute, 50-100% B; 17-20 minute 100% B; 20-21 minute 100%-50% B; 21-25 minute 0% B; the flow rate was 1 ml/min. Spiked samples were run to determine the efficiency of *p*-cresol recovery. Standard solutions at various *p*-cresol concentrations were made in MilliQ H₂O/ Acetonitrile 5%, from a stock *p*-cresol solution (1mg/ml, Sigma-Aldrich). Correlation coefficient of the calibration straight lines was always >0.999. The limit of detection, calculated as three times the height of baseline long-term noise, was 20 ng/ml, and the limit of quantification was 70 ng/ml.

Cotinine measurement by ELISA

Urinary cotinine levels were measured using the Cotinine ELISA kit (Calbiotech): 10 μ l of standard, controls and specimens were pipetted into selected well in duplicate. 100 μ l of the Enzyme Conjugate were added to each well. After incubation (60 minutes at room temperature, in the dark), the wells were washed and 100 μ l of Substrate reagent was added to each well. After incubation (60 minutes at room temperature, in the dark), 100 μ l of Stop Solution were added to

each well. The absorbance was read on ELISA reader at 450 nm. The lower limit of detection of this assay is 5 ng/ml, whereas the upper limit is 100 ng/ml. Smoking status was determined as in Zielińska-Danch et al. (2007): 0-50 ng/ml=non-smoker; 51-170 ng/ml=light passive smoker;171-550 ng/ml=heavy passive smoker; >550 ng/ml=active smoker.

Statistical analysis

Cases and controls were contrasted using Student t-test, Fisher's exact test, or the χ^2 statistics; Kendall's τ statistics was employed for correlation analysis; regression analysis was always performed on the entire sample (N=118). Quantitative data are presented as mean \pm S.E.M. Statistical significance is set at $P<0.05$.

Results

Urinary *p*-cresol concentrations are significantly higher among 59 autistic patients compared to 59 matched controls (123.5 ± 12.8 vs 91.2 ± 8.7 $\mu\text{g/ml}$, Student-t = 2.207, 116 df, $P<0.05$). This increase is interestingly restricted to ASD children younger than 8 years of age (134.1 ± 20.1 vs 70.3 ± 6.7 $\mu\text{g/ml}$, $t = 2.922$, 60 df, $P=0.005$), whereas no difference was found between patients and controls aged 8 or older (111.0 ± 14.5 vs 112.7 ± 15.5 $\mu\text{g/ml}$, $t = -0.81$, 54 df, $P=0.936$) (Fig.1). Before age 8, levels above 150 $\mu\text{g/ml}$ were detected in 9/32 (28.1%) ASD patients vs 0/32 controls ($P=0.002$) (Fig. 2), while levels above 140 $\mu\text{g/ml}$ were detected in 9/32 (28.1%) ASD patients vs 1/32 (3.1%) controls ($P=0.0127$). Urinary *p*-cresol displays no correlation with urinary cotinine levels (Kendall's $\tau = -0.005$ for the entire sample, -0.035 for ASD patients, and -0.009 for controls, $P=0.939$, 0.700 , and 0.922 , respectively). We found no evidence of active smoking in our sample; on average, non-smokers displayed higher, and not lower urinary *p*-cresol levels compared to light (4 ASD patients and 1 control) and heavy (2 controls) passive smokers (108.8 ± 8.2 vs 97.7 ± 25.4

1
2
3 vs 48.4 ± 35.0 $\mu\text{g/ml}$, respectively; $F=1.385$; 2,58 df, $P=0.259$). Hence elevated urinary *p*-cresol
4
5 amounts do not stem from active/passive smoking.
6
7

8 Urinary *p*-cresol concentrations were not significantly influenced by geographical region
9
10 ($P=0.261$), or by sex ($P=0.624$), whereas significant effects were detected for diagnostic status
11
12 ($P=0.001$), and for a status*sex interaction ($P=0.02$). In fact, 15 ASD females have significantly
13
14 higher *p*-cresol amounts compared to 44 ASD males (188.2 ± 35.9 vs 101.5 ± 10.9 $\mu\text{g/ml}$,
15
16 respectively; $t\text{-test}=-2.484$, 30df, $P<0.05$), while female and male controls do not differ (70.6 ± 15.3
17
18 vs 98.2 ± 10.6 $\mu\text{g/ml}$). Among children aged 7 or below, urinary *p*-cresol concentrations were vastly
19
20 higher among female autistics compared to female controls (222.2 ± 53.4 vs 51.2 ± 16.6 $\mu\text{g/ml}$,
21
22 respectively; $t\text{-test}=3.590$, 12df, $P=0.004$), whereas differences between male autistics and controls
23
24 do not reach statistical significance (104.7 ± 17.0 vs 75.1 ± 7.2 $\mu\text{g/ml}$, respectively; $t\text{-test}=1.128$,
25
26 46df, $P=0.265$). In numerical terms, if urinary *p*-cresol had been used as a diagnostic marker in our
27
28 sample (positive when *p*-cresol > 150 $\mu\text{g/ml}$), among children aged 7 or below the test would have
29
30 been positive in 5/8 (62.5%) ASD females and in 4/24 (16.7%) ASD males (Fisher's exact test,
31
32 $P<0.05$).
33
34
35
36
37
38
39

40 Interestingly, 8 of the 9 (88.9%) small children with urinary *p*-cresol above 150 $\mu\text{g/ml}$
41
42 satisfy DSM-IV diagnostic criteria for the most severe form of ASD, Autistic Disorder, compared to
43
44 only 11/23 (47.8%) of the remaining children in the same age interval, who display significantly
45
46 higher rates of the less severe form, PDD-NOS (Fisher's exact test, $P<0.05$). Among children aged
47
48 7 or below, all fifteen CARS items measuring clinical severity are positively correlated with urinary
49
50 *p*-cresol amounts, reaching statistical significance for imitation (item n. 2: $\tau=0.396$, $P=0.020$,
51
52 $N=21$), use of body (item n. 4: $\tau=0.330$, $P=0.036$), verbal communication (item n. 11: $\tau=0.387$,
53
54 $P=0.023$), and general impression (item n. 15: $\tau=0.534$, $P=0.002$). Also ADOS, ADI-R and VABS
55
56 scores display correlation trends consistent with those found with the CARS, but *P*-values do not
57
58 reach statistical significance due to low statistical power in our current sample. Small children with
59
60

1
2
3 urinary *p*-cresol above 150 µg/ml, compared to children with normal *p*-cresol amounts, display non-
4
5 significant trends ($P < 0.1$) toward more frequent mental retardation [7/8 (87.5%) vs 8/17 (47.1%)],
6
7 self-injurious behaviours [4/9 (44.4%) vs 3/18 (16.7%)], and a history of regression [6/9 (66.7%) vs
8
9 7/23 (30.4%)], reported by parents as loss of language skills after acquisition of more than 5 spoken
10
11 words and of social abilities after initial acquisition. No significant correlations between urinary *p*-
12
13 cresol and behavioural measures are present in ASD children older than 7 years of age.
14
15
16
17
18
19
20
21
22
23

24 Discussion

25
26 The present study demonstrates a significant increase in urinary *p*-cresol concentrations among 59
27
28 Italian ASD patients compared to an equal number of age-, sex-, and ethnically-matched controls.
29
30 This increase is present in approximately 30% of autistic children aged seven or younger, the
31
32 majority being girls in our sample. Urinary excretion of *p*-cresol appears to normalize after age 7
33
34 (Fig. 1). Importantly, urinary *p*-cresol does not derive from human metabolism: it can either stem
35
36 from the presence of gut bacteria, such as *clostridium difficile* and *pseudomonas stutzeri*, or from
37
38 contamination with petroleum hydrocarbon mixtures containing *p*-cresol. The most common source
39
40 of petroleum hydrocarbon contamination, active or passive smoking, has been excluded as a cause
41
42 of elevated urinary *p*-cresol in our sample by dosing urinary cotinine, the nicotine metabolite
43
44 representing the best known marker of passive and active smoking (Zielińska-Danch et al., 2007).
45
46 Other sources of environmental exposure to petroleum-derived *p*-cresol cannot be ruled out (Bright
47
48 and Healey, 2003). However, a selective exposure of autistic, and not of control children, appears
49
50 unlikely. Based on previously published reports (Finegold et al., 2002 and 2010; Song et al., 2004;
51
52 Parracho et al., 2005), a more plausible explanation would envision increased urinary *p*-cresol as
53
54 originating from an abnormal gut flora among autistic children, particularly enriched in *p*-cresol
55
56 producing bacteria. An excess of these microorganisms would result in increased *p*-cresol
57
58
59
60

1
2
3 formation, followed by absorption of *p*-cresol through the gut, filtration by the renal glomeruli, and
4
5 excretion through the urines in greater amounts, compared to typically-developing age-matched
6
7 children. This scenario has been recently proposed in two other studies, documenting elevated
8
9 concentrations of compounds presumably derived from clostridial strains or other gut flora, in the
10
11 urines of autistic individuals (Shaw, 2010; Yap et al., 2010). Based on this hypothesis, the
12
13 normalization of urinary *p*-cresol excretion around 8 years of age would conceivably stem from a
14
15 maturation of the gut immune system, yielding greater control over clostridial overgrowth. Also
16
17 genetic and hormonal liability could play an important role, with females particularly prone to
18
19 developing elevated urinary *p*-cresol, but normalizing at an age when sex hormone secretion begins
20
21 to increase. Alternatively, or in association with clostridial infections, excessive gut permeability
22
23 could facilitate *p*-cresol absorption through the gut wall. The existence of a “leaky gut” in a
24
25 subgroup of ASD patients is controversial and deserves further scrutiny according to a recent
26
27 consensus report (Buie et al., 2010). Nonetheless, at least some studies document abnormally
28
29 elevated ratios of urinary lactulose/mannitol following a standardized oral isomolar load of these
30
31 two probes (D’Eufemia, et al., 1996; De Magistris et al., 2010).
32
33
34
35
36
37

38
39 Regardless of the mechanisms underlying elevated urinary *p*-cresol, this compound may
40
41 have multiple negative consequences on the clinical course and management of a consistent
42
43 subgroup of ASD children. The positive correlation between urinary *p*-cresol and clinical severity
44
45 reported in the present study, as well as the correlation with a clinical history of regression, are
46
47 especially intriguing, given the striking similarities in chemical structure between *p*-cresol and
48
49 substances as toxic as phenol. It will thus be important to assess in a rodent model whether and to
50
51 what extent *p*-cresol can influence the function and/or the development of the central nervous
52
53 system, either directly or through its negative influence on immune parameters and endothelial
54
55 permeability (Vanholder et al., 1995; De Smet et al., 2003; Cerini et al., 2004). Another area of
56
57 concern is represented by the competition exerted by *p*-cresol on hepatic sulfotransferases involved
58
59 in the sulfation of many pharmacological agents, such as acetaminophen. Briefly, *p*-cresol
60

1
2
3 undergoes O-sulfonation by the same sulfotransferase which inactivates acetaminophen:
4
5 interestingly urinary *p*-cresol levels are negatively correlated with liver capacity to sulfonate
6
7 acetaminophen (Clayton et al., 2009). A reduction in liver sulfation capacity, specifically tested
8
9 using acetaminophen, has been recorded in low functioning autistic individuals (Alberti et al.,
10
11 1999). Our results spur interest into the potential role of *p*-cresol in these sulfation deficits, which
12
13 could render some ASD patients particularly prone to developing adverse side effects when
14
15 administered pharmacological therapies.
16
17
18
19
20
21

22 **Conclusions**

23
24
25 Urinary amounts of the toxic compound *p*-cresol are significantly elevated in autistic children
26
27 younger than age 8, especially in girls and in more severely affected patients. The present study thus
28
29 replicates and extends previous reports indicating *p*-cresol among a host of compounds
30
31 overrepresented in the urines of ASD patients (Yap et al., 2010). Follow-up mechanistic studies will
32
33 have to define the degree of overlap between elevated urinary *p*-cresol, gut flora composition, and
34
35 enhanced intestinal permeability in ASD patients, as well as their potential relationship with
36
37 gastrointestinal symptoms, abnormal behaviour, and personalized response to pharmacological
38
39 treatments. Finally, replication of these findings in larger samples should spur interest into possible
40
41 uses of urinary *p*-cresol as a biological marker of disease. In conjunction with other genetic and
42
43 biochemical markers, *p*-cresol could contribute to estimate autism risk or to support a clinical
44
45 diagnosis of ASD in small children, especially young girls.
46
47
48
49
50
51
52
53
54
55
56
57
58
59
60

Acknowledgements

The authors gratefully acknowledge all the families who participated in this study.

Declaration of interests

This work was supported by the Italian Ministry for University, Scientific Research and Technology (PRIN n.2006058195 and n.2008BACT54_002), the Italian Ministry of Health (RFPS-2007-5-640174), and the Autism Speaks Foundation (Princeton, NJ). The Authors declare no conflict of interest.

References

- Alberti A, Pirrone P, Elia M, Waring RH, Romano C. (1999). Sulphation deficit in "low-functioning" autistic children: a pilot study. *Biol Psychiatry* 46:420-4
- American Psychiatric Association. (1994). *Diagnostic and Statistical Manual of Mental Disorders*, 4th ed. Washington, DC: American Psychiatric Press.
- Birkett AM, Jones GP, Muir JG. (1995) Simple high performance liquid chromatographic analysis of phenol and p-cresol in urine and feces. *J Chromatogr B Biomed Appl* 674:187-91
- Bright DA, Healey N. (2003). Contaminant risks from biosolids land application: contemporary organic contaminant levels in digested sewage sludge from five treatment plants in Greater Vancouver, British Columbia. *Environ Pollut* 126:39-49
- Buie T, Campbell DB, Fuchs GJ 3rd, Furuta GT, Levy J, Vandewater J, Whitaker AH, Atkins D, Bauman ML, Beaudet AL, Carr EG, Gershon MD, Hyman SL, Jirapinyo P, Jyonouchi H, Kooros K, Kushak R, Levitt P, Levy SE, Lewis JD, Murray KF, Natowicz MR, Sabra A, Wershil BK, Weston SC, Zeltzer L, Winter H. (2010). Evaluation, diagnosis, and treatment of gastrointestinal disorders in individuals with ASDs: a consensus report. *Pediatrics* 125:S1-18
- Cafaro V, Notomista E, Capasso P, Di Donato A. (2005). Mutation of glutamic acid 103 of toluene o-xylene monooxygenase as a means to control the catabolic efficiency of a recombinant upper pathway for degradation of methylated aromatic compounds. *Appl Environ Microbiol* 71:4744-50
- Cerini C, Dou L, Anfosso F, Sabatier F, Moal V, Glorieux G, De Smet R, Vanholder R, Dignat-George F, Sampol J, Berland Y, Brunet P. (2004). P-cresol, a uremic retention solute, alters the endothelial barrier function in vitro. *Thromb Haemost* 92:140-50
- Clayton TA, Baker D, Lindon JC, Everett JR, Nicholson JK. (2009). Pharmacometabonomic identification of a significant host-microbiome metabolic interaction affecting human drug metabolism. *Proc Natl Acad Sci U S A* 106:14728-33

- 1
2
3
4
5
6 D'Eufemia P, Celli M, Finocchiaro R, Pacifico L, Viozzi L, Zaccagnini M, Cardi E, Giardini O.
7
8 (1996). Abnormal intestinal permeability in children with autism. *Acta Paediatr* 85:1076-9
9
- 10 De Magistris L, Familiari V, Pascotto A, Sapone A, Frolli A, Iardino P, Carteni M, De Rosa M,
11
12 Francavilla R, Riegler G, Militerni R, Bravaccio C. (2010). Alterations of the intestinal barrier
13
14 in patients with autism spectrum disorders and in their first-degree relatives. *J Pediatr*
15
16 *Gastroenterol Nutr* 51:418-24
17
- 18 De Smet R, Van Kaer J, Van Vlem B, De Cubber A, Brunet P, Lameire N, Vanholder R. (2003)
19
20 Toxicity of free p-cresol: a prospective and cross-sectional analysis. *Clin Chem* 49:470-8
21
22
- 23 Filipek PA, Accardo PJ, Baranek GT, Cook EH Jr, Dawson G, Gordon B, Gravel JS, Johnson CP,
24
25 Kallen RJ, Levy SE, Minshew NJ, Ozonoff S, Prizant BM, Rapin I, Rogers SJ, Stone WL,
26
27 Teplin S, Tuchman RF, Volkmar FR. (1999). The screening and diagnosis of autistic spectrum
28
29 disorders. *J Autism Dev Disord* 29:439-84
30
31
- 32 Finegold SM, Molitoris D, Song Y, Liu C, Vaisanen ML, Bolte E, McTeague M, Sandler R, Wexler
33
34 H, Marlowe EM, Collins MD, Lawson PA, Summanen P, Baysallar M, Tomzynski TJ, Read E,
35
36 Johnson E, Rolfe R, Nasir P, Shah H, Haake DA, Manning P, Kaul A. Gastrointestinal
37
38 microflora studies in late-onset autism. (2002). *Clin Infect Dis* 35:S6-S16
39
40
- 41 Finegold SM, Dowd SE, Gontcharova V, Liu C, Henley KE, Wolcott RD, Youn E, Summanen PH,
42
43 Granpeesheh D, Dixon D, Liu M, Molitoris DR, Green JA 3rd. (2010). Pyrosequencing study of
44
45 fecal microflora of autistic and control children. *Anaerobe* 16:444-53
46
47
48
49
- 50 Freitag CM. (2007). The genetics of autistic disorders and its clinical relevance: a review of the
51
52 literature. *Mol Psychiatry* 12:2-22
53
54
- 55 King RA, May BL, Davies DA, Bird AR. (2009). Measurement of phenol and p-cresol in urine
56
57 and feces using vacuum microdistillation and high-performance liquid chromatography. *Anal*
58
59 *Biochem* 384:27-33
60 Lintas C, Sacco R, Garbett K, Mirnics K, Militerni R, Bravaccio C, Curatolo
P, Manzi B, Schneider C, Melmed R, Elia M, Pascucci T, Puglisi-Allegra S, Reichelt K-L,

- 1
2
3 Persico AM. (2009). Involvement of the PRKCB1 gene in autistic disorder: significant genetic
4 association and reduced neocortical gene expression. *Mol Psychiatry* 14:705-18
5
6
7
8 Lord C, Rutter M, DiLavore PC, Risi S. (2002). *ADOS, Autism Diagnostic Observation Schedule*.
9
10 Los Angeles, CA: Western Psychological Services [Italian version by Tancredi R, Saccani M,
11
12 Persico AM, Parrini B, Iglizzi R, Faggioli R, editors (2005). Florence, Italy: Organizzazioni
13
14 Speciali]
15
16
17 Parracho HM, Bingham MO, Gibson GR, McCartney AL. (2005). Differences between the gut
18
19 microflora of children with autistic spectrum disorders and that of healthy children. *J Med*
20
21 *Microbiol* 54:987-91
22
23
24 Persico AM, Bourgeron T. (2006). Searching for ways out of the autism maze: genetic, epigenetic
25
26 and environmental clues. *Trends Neurosci* 29:349-58
27
28
29 Rutter M, Le Couter A, Lord C. (2003). *ADI-R, Autism Diagnostic Interview - Revised*. Los
30
31 Angeles, CA: Western Psychological Services [Italian version by Faggioli R, Saccani M,
32
33 Persico AM, Tancredi R, Parrini B, Iglizzi R, editors (2005). Florence, Italy: Organizzazioni
34
35 Speciali]
36
37
38 Schopler E, Reichler RJ, Rochen Renner BR. (1986). *The Childhood Autism Rating Scale for*
39
40 *diagnostic screening and classification of autism*. New York, NY: Irvington
41
42
43 Selmer T, Andrei PI. (2001). p-Hydroxyphenylacetate decarboxylase from *Clostridium difficile*. A
44
45 novel glycol radical enzyme catalysing the formation of p-cresol. *Eur J Biochem* 268:1363-
46
47 1372.
48
49
50 Shaw W. (2010). Increased urinary excretion of a 3-(3-hydroxyphenyl)-3-hydroxypropionic acid
51
52 (HPHPA), an abnormal phenylalanine metabolite of *Clostridia* spp. in the gastrointestinal tract,
53
54 in urine samples from patients with autism and schizophrenia. *Nutr Neurosci* 13:135-43
55
56
57 Song Y, Liu C, Finegold SM. (2004). Real-time PCR quantitation of clostridia in feces of autistic
58
59 children. *Appl Environ Microbiol* 70:6459-6465.
60

- 1
2
3 Sparrow SS, Balla DA, Cicchetti DV. (1984). *Vineland Adaptive Behavior Scales - Survey Form*.
4
5 Circle Pines, MN: American Guidance Service Inc
6
7
8 Vanholder R, De Smet R, Waterloos MA, Van Landschoot N, Vogeleere P, Hoste E, Ringoir S.
9
10 (1995). Mechanisms of uremic inhibition of phagocyte reactive species production:
11
12 characterization of the role of p-cresol. *Kidney Int* 47:510-7
13
14
15 Veenstra-VanderWeele J, Cook EH Jr. (2004). Molecular genetics of autism spectrum disorder. *Mol*
16
17 *Psychiatry* 9:819-832.
18
19
20 White JF. (2003). Intestinal pathophysiology in autism. *Exp Biol Med (Maywood)* 228:639-49
21
22
23 Yap IK, Angley M, Veselkov KA, Holmes E, Lindon JC, Nicholson JK. (2010). Urinary metabolic
24
25 phenotyping differentiates children with autism from their unaffected siblings and age-matched
26
27 controls. *J Proteome Res* 9:2996-3004
28
29
30 Zielińska-Danch W, Wardas W, Sobczak A, Szoltysek-Bołdys I. (2007). Estimation of urinary
31
32 cotinine cut-off points distinguishing non-smokers, passive and active smokers. *Biomarkers*
33
34 12:484-96
35
36
37
38
39
40
41
42
43
44
45
46
47
48
49
50
51
52
53
54
55
56
57
58
59
60

Figure Legends

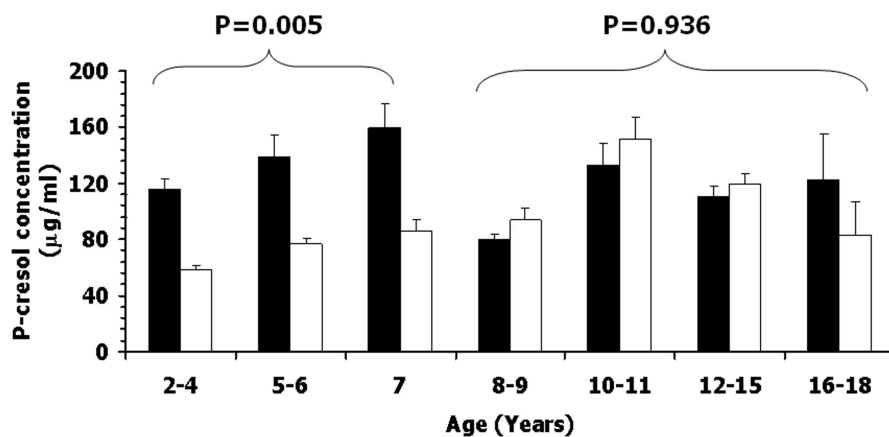
Figure 1. Urinary *p*-cresol concentrations by age group, in 59 ASD patients and in 59 age-, sex-, and ethnically-matched controls. Data are presented as mean \pm S.E.M. P-values refer to case-control contrasts in 32 pairs aged 2-7, and in 27 pairs 8-18 years old.

Figure 2. Urinary *p*-cresol concentrations in 32 ASD patient-control pairs, up to 7 years of age or younger. The nine patients highlighted by black circles are all above the maximum *p*-cresol concentration recorded in a typically developing child within this same age range (149.8 μ g/ml, as highlighted by the hyphenated line).

Table 1. Demographic and clinical characteristics of the autistic sample. Total N=59, unless otherwise specified

	N	Mean/Median	Range
Age in yrs (<i>mean</i> ± <i>S.E.M.</i>):	N = 59	8.29 ± 0.07	2-18
Median ADOS scores:	N = 32		
1) Language and communication		5.0	0-10
2) Social interactions		10.0	4-13
3) Play and imagination		3.0	0-5
4) Stereotypies		2.5	0-6
5) Abnormal behaviors		0.0	0-2
Median ADI scores:	N = 18		
A) Reciprocal social interactions		23.0	5-34
B) Language/Communication		16.0	9-24
C) Restricted, repetitive and stereotyped behaviors and interests		7.0	1-12
D) Behavioral abnormalities at or prior to 36 months of age		4.0	0-5
Median CARS scores:	N = 32		
1) Social relationship		2.75	1.0-4.0
2) Imitation		2.75	1.0-4.0
3) Emotional response		2.50	1.5-4.0
4) Use of body		2.50	1.0-4.0
5) Use of objects		3.00	1.0-4.0
6) Mental and behavioral flexibility		2.00	1.0-3.5
7) Visual response		2.25	1.0-3.5
8) Hearing response		2.00	1.0-3.5
9) Use of senses		2.00	1.0-4.0
10) Fear and anxiety		2.00	1.0-4.0

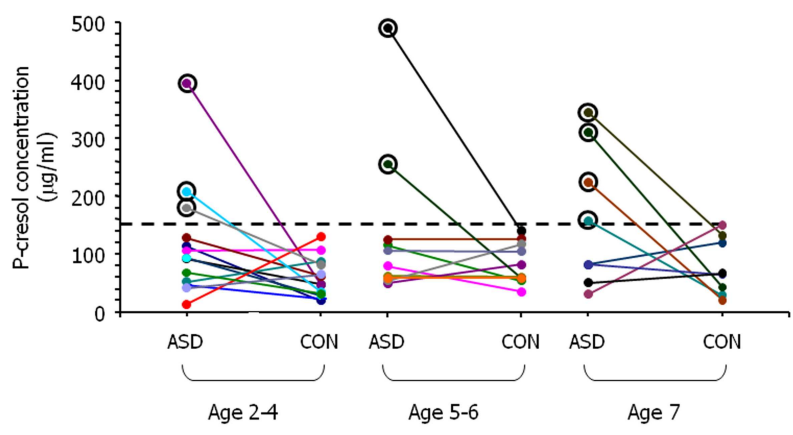
11) Verbal communication		3.00	1.5-4.0
12) Non verbal communication		2.50	1.0-4.0
13) Activity level		2.00	1.0-3.5
14) Cognitive level		2.25	1.0-3.5
15) General impression		3.00	1.5-4.0
Median VABS scores:	N = 25		
Communication		88.0	25-124
Daily living skills		100.0	20-180
Socialization		93.0	30-123
Motor skills		104.5	60-120
Composite		90.0	23-123
	N	Percent	
Gender:	<i>Male</i>	44	74.6%
	<i>Female</i>	15	25.4%
	<i>M/F ratio</i>	2.9 : 1	
Family type:	<i>Simplex</i>	54	91.5%
	<i>Multiplex</i>	5	8.5%
DSM-IV Diagnosis:	<i>Autistic Disorder</i>	37	62.7%
	<i>Asperger Syndrome</i>	4	6.8%
	<i>PDD-NOS</i>	18	30.5%
I.Q. (N=45):	<i>>70</i>	17	37.8%
	<i>≤ 70</i>	28	62.2%



254x190mm (300 x 300 DPI)

View Only

1
2
3
4
5
6
7
8
9
10
11
12
13
14
15
16
17
18
19
20
21
22
23
24
25
26
27
28
29
30
31
32
33
34
35
36
37
38
39
40
41
42
43
44
45
46
47
48
49
50
51
52
53
54
55
56
57
58
59
60



254x190mm (300 x 300 DPI)

Pre-proof Only

1
2
3
4
5
6
7
8
9
10
11
12
13
14
15
16
17
18
19
20
21
22
23
24
25
26
27
28
29
30
31
32
33
34
35
36
37
38
39
40
41
42
43
44
45
46
47
48
49
50
51
52
53
54
55
56
57
58
59
60

Urinary *p*-cresol is elevated in small children with severe Autism Spectrum Disorder

Laura Altieri,^{1,2} Cristina Neri,^{2,9} Roberto Sacco,^{1,2} Paolo Curatolo,³ Arianna Benvenuto,³

Filippo Muratori,⁴ Elisa Santocchi,⁴ Carmela Bravaccio,⁵ Carlo Lenti,⁶

Monica Saccani,⁶ Roberto Rigardetto,⁷ Marina Gandione,⁷ Andrea Urbani,^{2,8} Antonio M. Persico^{1,2}

¹Laboratory of Molecular Psychiatry and Neurogenetics, University Campus Bio-Medico, Rome, Italy;

²Department of Experimental Neurosciences, I.R.C.C.S. "Fondazione S. Lucia", Rome, Italy;

³Department of Child Neuropsychiatry, University "Tor Vergata", Rome, Italy;

⁴Department of Child Neurology and Psychiatry, I.R.C.C.S. "Stella Maris" & University of Pisa, Pisa, Italy;

⁵Department of Pediatrics, University "Federico II", Naples, Italy;

⁶Department of Child Neuropsychiatry, University of Milan, Milan, Italy;

⁷Department of Child Neuropsychiatry, University of Turin, Turin, Italy;

⁸Department of Internal Medicine, University "Tor Vergata", Rome, Italy

Supplementary Figures (for reviewers only)

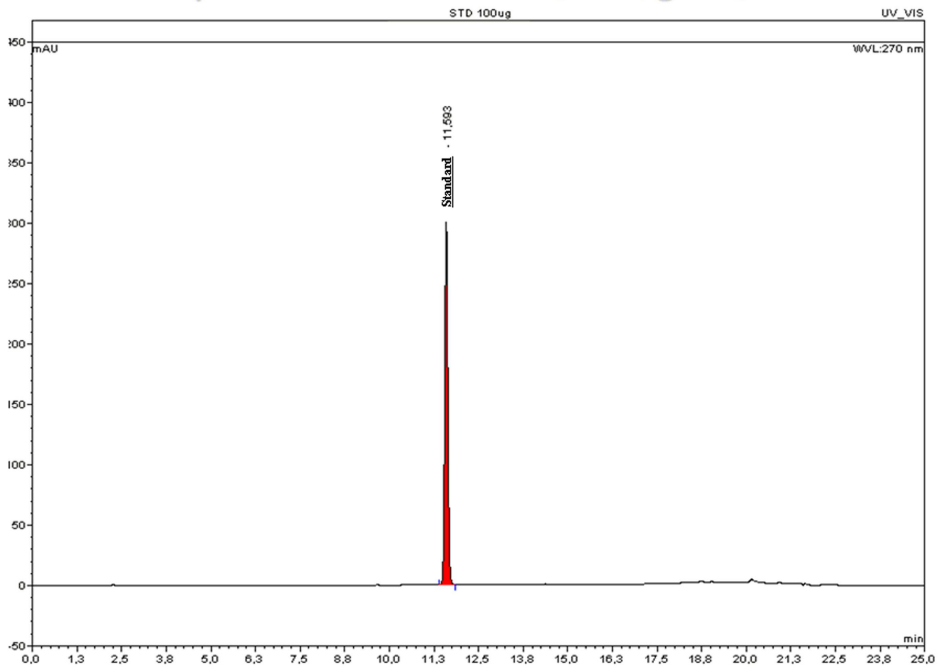
Supplementary Figure S1. HPLC plot showing the peak recorded by injecting 100 µg/ml of *p*-cresol standard.

Supplementary Figure S2. HPLC plot of the urine sample from a 5 years old typically-developing male control. The *p*-cresol peak is highlighted in red.

Supplementary Figure S3. HPLC plot of the urine sample of a 4 years old autistic boy. The *p*-cresol peak is highlighted in red.

1
2
3
4
5
6
7
8
9
10
11
12
13
14
15
16
17
18
19
20
21
22
23
24
25
26
27
28
29
30
31
32
33
34
35
36
37
38
39
40
41
42
43
44
45
46
47
48
49
50
51
52
53
54
55
56
57
58
59
60

p-cresol standard (100µg/ml)

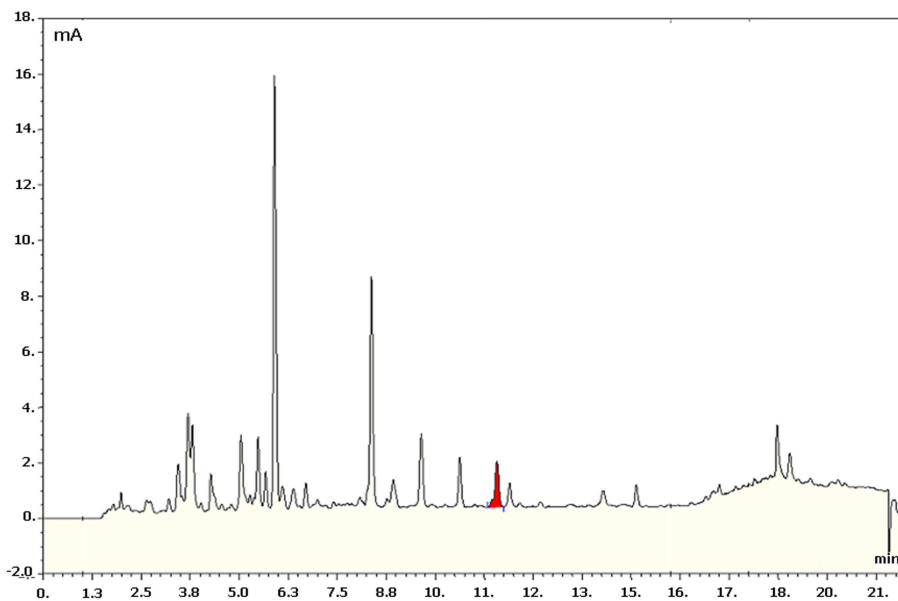


254x190mm (300 x 300 DPI)

View Only

1
2
3
4
5
6
7
8
9
10
11
12
13
14
15
16
17
18
19
20
21
22
23
24
25
26
27
28
29
30
31
32
33
34
35
36
37
38
39
40
41
42
43
44
45
46
47
48
49
50
51
52
53
54
55
56
57
58
59
60

Control male, 5 y.o.

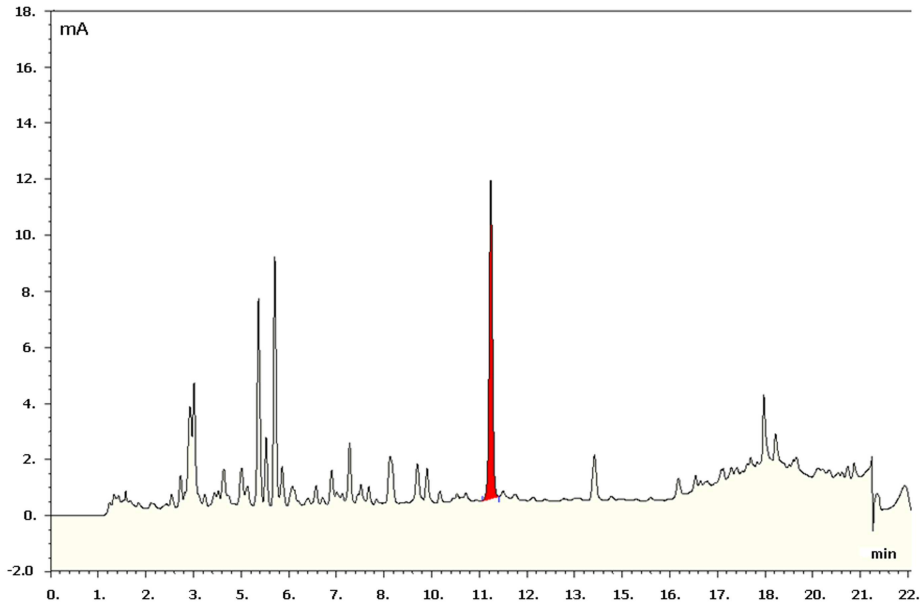


254x190mm (300 x 300 DPI)

ew Only

1
2
3
4
5
6
7
8
9
10
11
12
13
14
15
16
17
18
19
20
21
22
23
24
25
26
27
28
29
30
31
32
33
34
35
36
37
38
39
40
41
42
43
44
45
46
47
48
49
50
51
52
53
54
55
56
57
58
59
60

Autistic male, 4 y.o.



254x190mm (300 x 300 DPI)

ew Only