

This is the peer reviewed version of the following article:

The structure of a pentachromium(II) extended metal atom chain at 3 K: Cotton's conjecture proven / Cornia, Andrea; Nicolini, Alessio; Mcmonagle, Charles J.; Probert, Michael R.. - In: DALTON TRANSACTIONS. - ISSN 1477-9226. - 51:44(2022), pp. 16790-16794. [10.1039/D2DT03103E]

Terms of use:

The terms and conditions for the reuse of this version of the manuscript are specified in the publishing policy. For all terms of use and more information see the publisher's website.

03/05/2026 23:40

(Article begins on next page)

ELECTRONIC SUPPLEMENTARY INFORMATION

X-ray Crystallography. Single crystals of **2** were obtained with the procedure described in Ref. ¹ and were protected with vacuum grease until measurement. The selected crystal was mounted with low temperature epoxy resin to a graphite fibre to enable conduction cooling inside a vacuum chamber. Further details on the experimental setup have been described elsewhere.²

The most intense peaks in the diffraction pattern fit a tetragonal body-centered lattice with unit cell vectors (\mathbf{a}_I , \mathbf{b}_I , \mathbf{c}_I) similar to those reported by Peng's group ($a_I = b_I \sim 10.8 \text{ \AA}$, $c_I \sim 26.2 \text{ \AA}$ at room temperature).³ Solution and refinement in space-group $I4/m$ indeed affords the heavily disordered structure published by these authors.³ Full indexing requires a primitive tetragonal lattice (\mathbf{a}_P , \mathbf{b}_P , \mathbf{c}_P) with $a_P = b_P = a_I/\sqrt{2} \sim 15.3 \text{ \AA}$, $c_I = c_P$, and \mathbf{a}_P and \mathbf{b}_P directed along the bisectors of \mathbf{a}_I and \mathbf{b}_I . However, systematic absences (hkl : $h+l$ and $k+l$ odd) are impossible for a tetragonal space group. Furthermore, among $hk0$ reflections only those with even h and k are observed, while $00l$ is of course observed only for even l . Monoclinic space-group $A2/a$ (z unique axis) pseudomerohedrally twinned by 90° rotation along z gives exactly such systematic absences. Due to twinning, reflection hkl overlaps with $k-hl$ and this adds intensity to the reflections of the prime component with $k+l =$ odd, unless $h+l$ is also odd. An a -type glide plane combined with an A lattice requires h and k to be even in observable $hk0$ reflections. Since twinning overlaps $hk0$ with $k-h0$, this condition remains valid also for the twinned sample. An obvious relabelling of unit cell axes to have y as the unique axis leads to space group $C2/c$, which was used for the final integration of data collection frames.

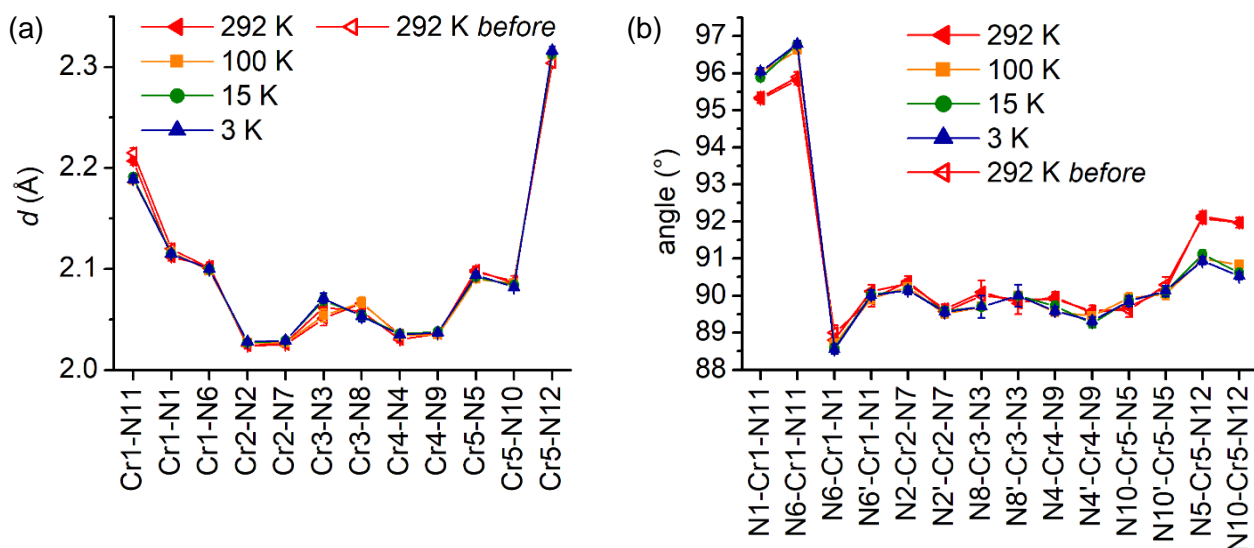


Fig. S1 (a) Cr-N distances and (b) *cis* N-Cr-N angles in **2** at different temperatures.

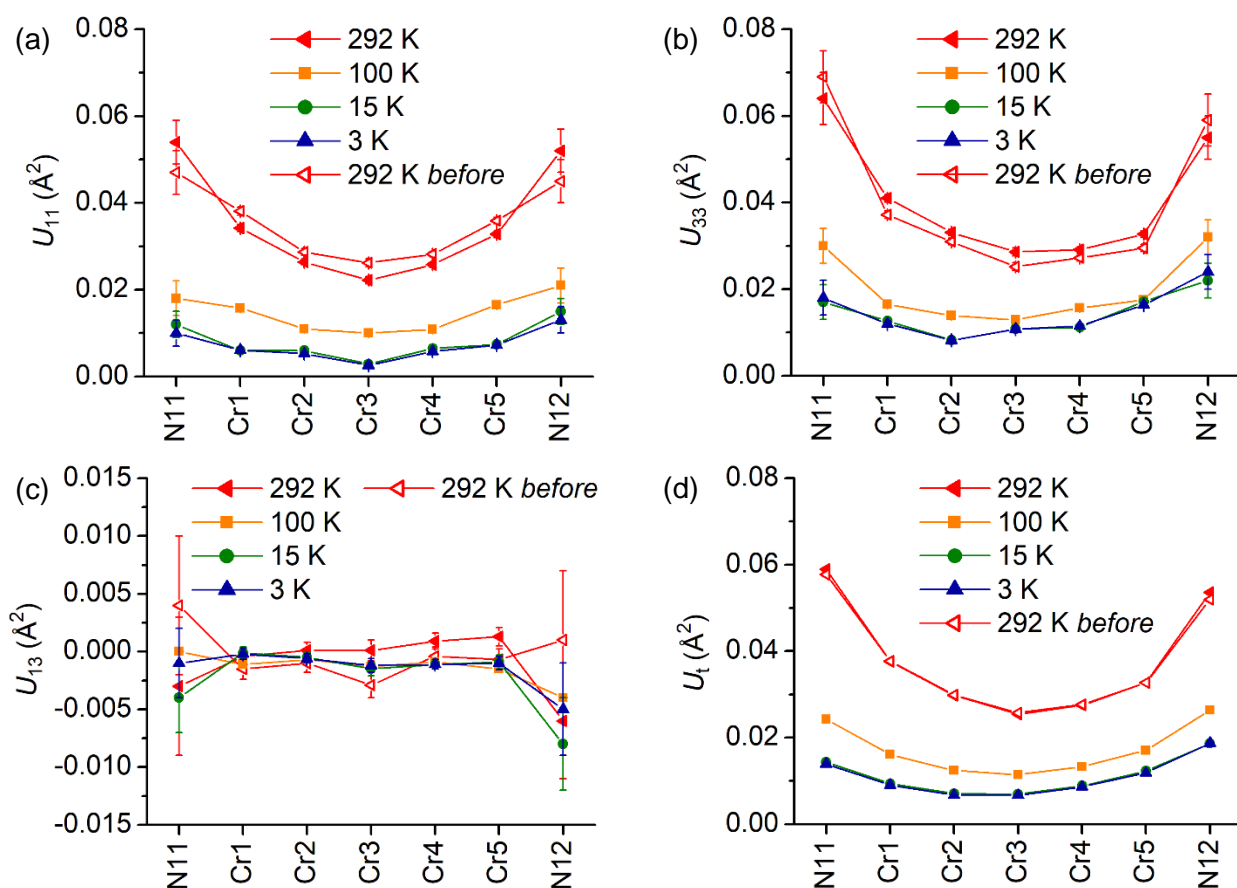


Fig. S2 (a) U_{11} , (b) U_{33} , (c) U_{13} , and (d) U_t values for metal atoms, N11, and N12 in **2** at different temperatures. U_t was obtained by averaging the principal mean-square atomic displacements orthogonal to y . Notice that $U_{12} = U_{23} = 0$ by symmetry.

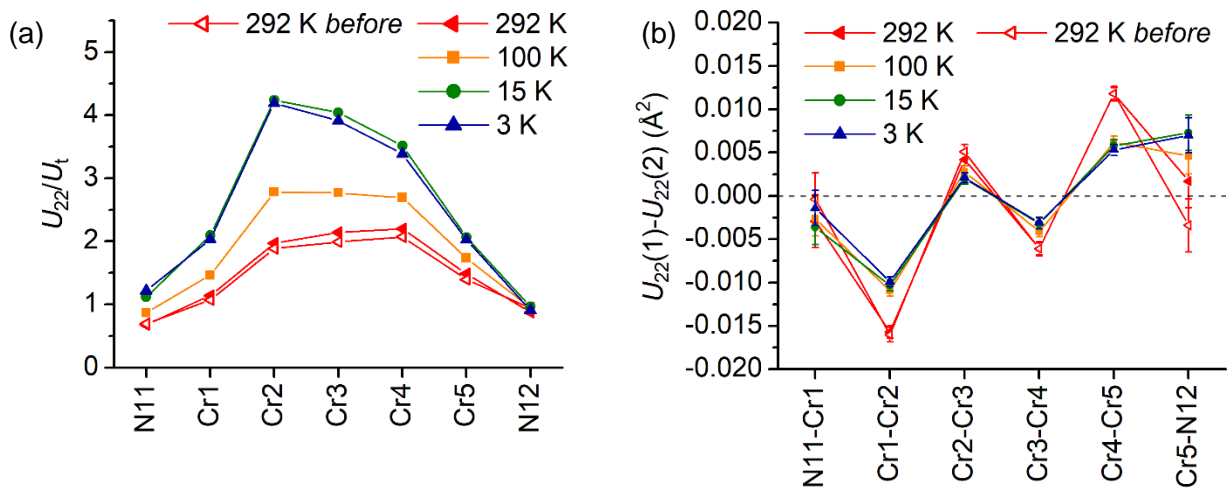


Fig. S3 (a) Prolateness of displacement ellipsoids and (b) difference between U_{22} values of neighbouring atoms in **2** at different temperatures.

Table S1 Crystal data and refinement parameters for **2** at different temperatures.

formula	$C_{62}H_{44}Cr_5N_{22}S_2$				
M (g mol ⁻¹)	1421.31				
T (K)	292 ^a	100	15	3	292 ^b
crystal system	monoclinic				
space group	$C2/c$ (No. 15)				
a (Å)	15.2547(4)	15.1037(4)	15.0601(4)	15.0605(4)	15.2426(3)
b (Å)	26.2195(8)	26.1632(8)	26.1633(7)	26.1672(7)	26.2039(7)
c (Å)	15.2032(4)	15.0198(4)	14.9768(4)	14.9728(4)	15.2056(3)
α (°)	90.000				
β (°)	90.0121(16)	90.0189(16)	90.0266(16)	90.023(2)	90.0060(10)
γ (°)	90.000				
V (Å ³)	6080.8(3)	5935.2(3)	5901.2(3)	5900.6(3)	6073.4(2)
Z	4				
ρ_{calcd} (g cm ⁻³)	1.553	1.591	1.600	1.600	1.554
crystal size (mm ³)	0.38×0.25×0.25				
λ (Å)	0.71073				
μ (mm ⁻¹)	0.996	1.020	1.026	1.026	0.997
θ_{max} (°)	26.382	26.364	26.377	26.376	26.368
refls. coll./indep.	5214/5214	5092/5092	5069/5069	5064/5064	5213/5213
params./restrs.	417/466				
$R1$	0.0704	0.0426	0.0420	0.0413	0.0564
$wR2$	0.1585	0.1008	0.1023	0.1005	0.1159
$R1 [I > 2\sigma(I)]$	0.0506	0.0335	0.0349	0.0343	0.0360
$wR2 [I > 2\sigma(I)]$	0.1344	0.0921	0.0961	0.0942	0.0985
GOF	1.061	1.042	1.051	1.050	1.016
res. max/min (eÅ ⁻³)	0.706/−1.047	0.789/−1.158	0.795/−1.064	0.754/−1.042	0.299/−0.833

^aBefore cooling down. ^bAfter cooling down.

Table S2 Cr-N distances (Å) in **2** at different temperatures (K).

<i>T</i>	Cr1-N11 ^a	Cr1-N1	Cr1-N6	Cr2-N2	Cr2-N7	Cr3-N3	Cr3-N8	Cr4-N4	Cr4-N9	Cr5-N5	Cr5-N10	Cr5-N12 ^a
292 ^b	2.215(5)	2.120(5)	2.101(5)	2.024(3)	2.025(3)	2.051(7)	2.066(6)	2.035(3)	2.036(3)	2.097(5)	2.088(5)	2.304(5)
3	2.189(4)	2.115(3)	2.100(3)	2.028(2)	2.029(2)	2.071(5)	2.053(5)	2.035(2)	2.037(2)	2.094(3)	2.082(3)	2.316(4)
15	2.191(4)	2.115(3)	2.100(3)	2.027(2)	2.029(2)	2.069(5)	2.054(5)	2.036(2)	2.038(2)	2.092(3)	2.084(3)	2.313(4)
100	2.188(4)	2.117(3)	2.098(3)	2.027(2)	2.027(2)	2.054(6)	2.067(5)	2.034(2)	2.035(2)	2.090(3)	2.086(3)	2.312(4)
292 ^c	2.207(4)	2.112(4)	2.103(4)	2.024(3)	2.027(3)	2.062(6)	2.058(6)	2.030(3)	2.036(3)	2.099(4)	2.086(4)	2.304(4)

^aNitrogen donor of isothiocyanato ligand. ^bBefore cooling down. ^cAfter cooling down.

Table S3 Deviation (Å) of Cr atoms from the mean plane through their equatorial N donors in **2** at different temperatures (K).^a

<i>T</i>	Cr1	Cr2	Cr3	Cr4	Cr5
292 ^b	-0.2067(21)	0.0412(20)	-0.0634(21)	0.1363(20)	0.0741(21)
3	-0.2352(16)	0.1031(16)	-0.1102(17)	0.1986(16)	0.0267(16)
15	-0.2321(16)	0.0978(16)	-0.1054(17)	0.1936(16)	0.0317(16)
100	-0.2318(16)	0.0961(16)	-0.1052(17)	0.1900(16)	0.0333(16)
292 ^c	-0.2043(18)	0.0429(17)	-0.0627(19)	0.1356(17)	0.0753(18)

^aA positive deviation is a displacement along the Cr1-Cr5 vector. ^bBefore cooling down. ^cAfter cooling down.

Table S4 Mean-square displacement amplitudes (\AA^2) in **2** at different temperatures (K).^a

T	$U_{11}(\text{N11}^b)$	$U_{11}(\text{Cr1})$	$U_{11}(\text{Cr2})$	$U_{11}(\text{Cr3})$	$U_{11}(\text{Cr4})$	$U_{11}(\text{Cr5})$	$U_{11}(\text{N12}^b)$
292 ^c	0.047(5)	0.0381(9)	0.0287(8)	0.0262(9)	0.0282(7)	0.0359(8)	0.045(5)
3	0.010(3)	0.0061(5)	0.0053(4)	0.0026(6)	0.0058(4)	0.0073(5)	0.013(3)
15	0.012(3)	0.0060(5)	0.0060(4)	0.0029(6)	0.0065(5)	0.0074(5)	0.015(3)
100	0.018(4)	0.0158(6)	0.0110(5)	0.0100(7)	0.0109(5)	0.0165(6)	0.021(4)
292 ^d	0.054(5)	0.0342(8)	0.0264(7)	0.0222(8)	0.0258(7)	0.0328(8)	0.052(5)

T	$U_{22}(\text{N11}^b)$	$U_{22}(\text{Cr1})$	$U_{22}(\text{Cr2})$	$U_{22}(\text{Cr3})$	$U_{22}(\text{Cr4})$	$U_{22}(\text{Cr5})$	$U_{22}(\text{N12}^b)$
292 ^c	0.040(3)	0.0404(6)	0.0564(6)	0.0513(6)	0.0574(6)	0.0456(6)	0.049(3)
3	0.017(2)	0.0184(4)	0.0283(4)	0.0262(4)	0.0293(5)	0.0240(4)	0.017(2)
15	0.016(2)	0.0196(4)	0.0299(5)	0.0279(4)	0.0311(5)	0.0253(5)	0.018(2)
100	0.021(2)	0.0236(4)	0.0345(5)	0.0317(4)	0.0358(5)	0.0296(5)	0.025(2)
292 ^d	0.040(3)	0.0429(5)	0.0586(5)	0.0544(5)	0.0605(5)	0.0487(5)	0.047(3)

T	$U_{33}(\text{N11}^b)$	$U_{33}(\text{Cr1})$	$U_{33}(\text{Cr2})$	$U_{33}(\text{Cr3})$	$U_{33}(\text{Cr4})$	$U_{33}(\text{Cr5})$	$U_{33}(\text{N12}^b)$
292 ^c	0.069(6)	0.0372(9)	0.0310(8)	0.0252(9)	0.0272(7)	0.0295(8)	0.059(6)
3	0.018(4)	0.0120(6)	0.0082(5)	0.0108(7)	0.0115(5)	0.0164(6)	0.024(4)
15	0.017(4)	0.0127(6)	0.0082(5)	0.0108(7)	0.0112(5)	0.0171(6)	0.022(4)
100	0.030(4)	0.0165(6)	0.0139(5)	0.0129(7)	0.0157(5)	0.0175(6)	0.032(4)
292 ^d	0.064(6)	0.0410(9)	0.0331(7)	0.0286(9)	0.0291(7)	0.0327(8)	0.055(5)

T	$U_{13}(\text{N11}^b)$	$U_{13}(\text{Cr1})$	$U_{13}(\text{Cr2})$	$U_{13}(\text{Cr3})$	$U_{13}(\text{Cr4})$	$U_{13}(\text{Cr5})$	$U_{13}(\text{N12}^b)$
292 ^c	0.004(6)	-0.0015(9)	-0.0010(8)	-0.0029(11)	-0.0004(8)	-0.0007(9)	0.001(6)
3	-0.001(3)	-0.0002(5)	-0.0006(4)	-0.0012(6)	-0.0011(4)	-0.0010(6)	-0.005(4)
15	-0.004(3)	-0.0001(5)	-0.0005(4)	-0.0015(6)	-0.0011(4)	-0.0009(6)	-0.008(4)
100	0.000(4)	-0.0011(6)	-0.0007(4)	-0.0013(6)	-0.0009(4)	-0.0015(6)	-0.004(4)
292 ^d	-0.003(6)	-0.0004(8)	0.0001(7)	0.0001(9)	0.0009(7)	0.0013(8)	-0.006(5)

T	$U_{\parallel}(\text{N11}^b)$	$U_{\parallel}(\text{Cr1})$	$U_{\parallel}(\text{Cr2})$	$U_{\parallel}(\text{Cr3})$	$U_{\parallel}(\text{Cr4})$	$U_{\parallel}(\text{Cr5})$	$U_{\parallel}(\text{N12}^b)$
292 ^c	0.0577	0.0377	0.0299	0.02575	0.0277	0.0327	0.05195
3	0.01395	0.00905	0.00675	0.0067	0.00865	0.01185	0.01875
15	0.01435	0.00935	0.00705	0.0069	0.00885	0.01225	0.01865
100	0.0242	0.0161	0.0124	0.01145	0.0133	0.01705	0.02635
292 ^d	0.05895	0.0376	0.02975	0.0254	0.0275	0.03275	0.0536

^aBy symmetry, $U_{12} = U_{23} = 0$ and U_{22} is a principal component of the U -tensor. ^bNitrogen donor of isothiocyanato ligand. ^cBefore cooling down. ^dAfter cooling down.

References

- 1 A. Cornia, A.-L. Barra, V. Bulicanu, R. Clérac, M. Cortijo, E. A. Hillard, R. Galavotti, A. Lunghi, A. Nicolini, M. Rouzières, L. Sorace and F. Totti, *Inorg. Chem.*, 2020, **59**, 1763–1777.
- 2 M. R. Probert, C. M. Robertson, J. A. Coome, J. A. K. Howard, B. C. Michell and A. E. Goeta, *J. Appl. Crystallogr.*, 2010, **43**, 1415–1418.
- 3 H. Chang, J. Li, C. Wang, T. Lin, H.-C. Lee, G. Lee and S. Peng, *Eur. J. Inorg. Chem.*, 1999, **1999**, 1243–1251.