

This is the peer reviewed version of the following article:

Fibroblasts from patients affected by Pseudoxanthoma elasticum exhibit an altered PPi metabolism and are more responsive to pro-calcifying stimuli / Boraldi, Federica; Annovi, Giulia; Bartolomeo, Angelica; Quaglino, Daniela. - In: JOURNAL OF DERMATOLOGICAL SCIENCE. - ISSN 0923-1811. - STAMPA. - 74:1(2014), pp. 72-80. [10.1016/j.jdermsci.2013.12.008]

Terms of use:

The terms and conditions for the reuse of this version of the manuscript are specified in the publishing policy. For all terms of use and more information see the publisher's website.

24/04/2026 11:04

(Article begins on next page)

1 **Fibroblasts from patients affected by Pseudoxanthoma elasticum exhibit an**
2
3 **altered PPi metabolism and are more responsive to pro-calcifying stimuli.**
4
5
6
7
8
9

10
11 Federica Boraldi, Giulia Annovi, Angelica Bartolomeo, Daniela Quaglino*
12
13

14
15 Department of Life Sciences, University of Modena and Reggio Emilia, Modena (Italy)
16
17
18
19

20
21
22
23 Keywords: ectopic calcification, fibroblasts, pyrophosphate, pseudoxanthoma elasticum
24

25 Running Title: PPi metabolism in PXE
26

27 Text word count: 3512
28

29 Number of references: 40
30
31

32 Tables: 1
33
34

35 Figures: 7
36
37
38
39

40 *Address for correspondence:
41

42 Prof. Daniela Quaglino
43

44 Department of Life Sciences
45

46 Via Campi 287
47
48

49 41125 Modena (Italy)
50
51

52 Tel: +39-059-2055418
53

54 Fax: +39-059-2055426
55
56

57 Email: daniela.quaglino@unimore.it
58
59
60
61
62
63
64
65

1 **Abbreviation list**
2

3 ALPL/TNAP (gene/protein), tissue-nonspecific alkaline phosphatase isozyme
4

5 ANKH/ANKH (gene/protein), progressive ankylosis protein homolog
6

7 CM, calcifying medium
8

9 ENPPI/PC1 (gene/protein), ectonucleotide pyrophosphatase/phosphodiesterase family
10

11 member 1
12

13 MGP, Matrix Gla Protein
14

15 Pi, inorganic phosphate
16

17 PPi, inorganic pyrophosphate
18

19 PXE, Pseudoxanthoma elasticum
20

21 SPP1/OPN (gene/protein), osteopontin
22
23
24
25
26
27
28
29
30
31
32
33
34
35
36
37
38
39
40
41
42
43
44
45
46
47
48
49
50
51
52
53
54
55
56
57
58
59
60
61
62
63
64
65

1 **Abstract**

2
3 **Background.** Pseudoxanthoma elasticum (PXE) is a genetic disorder characterized by
4 progressive calcification of soft connective tissues. The pathogenesis is still hard to pin down.
5
6 In PXE dermal fibroblasts, in addition to impaired carboxylation of the vitamin K-dependent
7 inhibitor matrix Gla protein (MGP), we have also demonstrated an up-regulation of alkaline
8 phosphatase activity. In the light of these data we have suggested that both calcium and
9 phosphate metabolism might be locally altered, both pathways acting in synergy on the
10 occurrence of matrix calcification.

11
12 **Objective.** This study aims to better explore if cultured PXE fibroblasts, compared to
13 control cells, exhibit a modified inorganic pyrophosphate (PPi) metabolism and are more
14 responsive to pro-calcifying stimuli.
15

16 **Methods:** Primary human dermal fibroblasts isolated from healthy individuals and from
17 PXE patients were cultured for different time points in standard and in pro-calcifying
18 media. The expression of ANKH/ANKH, ENPPI/PC1, ALPL/TNAP, SPPI/OPN were
19 evaluated by PCR and Western blot, respectively. TNAP activity was measured by
20 spectrophotometric analyses, whereas calcification was investigated by light and electron
21 microscopy as well as by micro-analytical techniques.
22

23 **Results.** In the presence of pro-calcifying stimuli, dermal fibroblasts alter their phenotype
24 favouring matrix mineralization. In particular, ENPPI/PC1 and SPPI/OPN expression, as
25 well as TNAP activity, were differently expressed in control and in PXE fibroblasts.
26 Moreover, in pathologic cells the ratio between factors favouring and reducing PPi
27 availability exhibit a more pronounced shift towards a pro-calcifying balance.
28

29 **Conclusion.** PXE fibroblasts are more susceptible to pro-calcifying stimuli and in these
30 cells an altered PPi metabolism contributes to matrix calcification.
31
32
33
34
35
36
37
38
39
40
41
42
43
44
45
46
47
48
49
50
51
52
53
54
55
56
57
58
59
60
61
62
63
64
65

1 **Introduction**

2
3 Ectopic calcification is a deleterious and worldwide complication affecting soft
4
5 connective tissues [1]. In the last decade, the involvement of numerous genes/proteins
6
7 has been disclosed in a number of investigations, indicating that pathologic
8
9 mineralization is the result of an active and dynamic balance of pro- and anti-calcifying
10
11 mechanisms [2,3]. Never the less, there are no therapeutic options capable to efficiently
12
13 inhibit the occurrence of ectopic calcification [4], suggesting that at least some of the
14
15 pathogenetic mechanisms are still elusive and need to be further explored.
16
17

18
19 Within this context, Pseudoxanthoma elasticum (PXE), an autosomal recessive disorder
20
21 mainly affecting skin, eyes and the cardiovascular system, is typically characterized by
22
23 a progressive mineralization of the elastic component of soft connective tissues [5]
24
25 without any clear evidence of inflammation, cell necrosis or apoptosis [6]. Moreover, in
26
27 PXE, in the absence of increased circulating levels of calcium and phosphate [7],
28
29 calcified elastic fibres have a calcium/phosphate ratio similar to that of physiologically
30
31 mineralized tissues as bone [8]. Surprisingly, PXE is associated to mutations in the
32
33 ABCC6 gene [9] that encodes for a transmembrane protein highly expressed in liver and
34
35 kidney, whereas it is barely detectable in soft connective tissues [6]. Clinical data and
36
37 experimental observations indicate that, in PXE, ectopic calcification is not a passively
38
39 diffused phenomenon, but affects peculiar matrix components in specific anatomical
40
41 areas, although the pathogenetic mechanisms are still elusive. It has been suggested that
42
43 elastic fibre calcification is the result of altered regulatory mechanisms that, possibly
44
45 mediated or induced by factors abnormally released from the liver [6, 10-12], may
46
47 influence mesenchymal cells. These cells are responsible for triggering soft connective
48
49 tissue mineralization in defined areas and not in the whole matrix, as it would occur
50
51
52
53
54
55
56
57
58
59
60
61
62
63
64
65

1 simply due to the presence of altered circulating levels of calcium and phosphate and/or
2
3 of other systemic factors [13-15]. At least in the skin, fibroblasts should be considered
4
5 the principal candidates for the occurrence and progression of dermal ectopic
6
7 calcification [16].
8
9

10 In previous *in vitro* studies, we have demonstrated that PXE fibroblasts are unable to
11
12 properly carboxylate matrix Gla protein (MGP) [7,17-18], a potent vitamin K-dependent
13
14 inhibitor of calcium deposition [19] and are characterized by increased alkaline
15
16 phosphatase activity [7]. However, up-regulated TNAP activity is necessary, but not
17
18 sufficient, to induce the mineralization process, as demonstrated in *in vitro* standard cell
19
20 culture conditions [18]. An appropriate ratio between inducers and inhibitors of
21
22 calcifications (either present in serum supplemented media or produced by cells) is in
23
24 fact required to have hydroxyapatite actively deposited on the cellular monolayer [7, 20].
25
26
27

28 Aim of this study was to investigate whether primary human dermal fibroblasts from
29
30 PXE patients are more responsive to pro-calcifying stimuli than control cells from
31
32 healthy individuals. Moreover, we have investigated if these fibroblasts exhibit a
33
34 differential expression of genes/proteins involved in the inorganic pyrophosphate (PPi)
35
36 metabolism (i.e. progressive ankylosis protein homolog, *ANKH/ANKH*; ectonucleotide
37
38 pyrophosphatase/phosphodiesterase family member 1, *ENPPI/PC1*; tissue-non specific
39
40 alkaline phosphatase isozyme, *ALPL/TNAP*). Moreover, given the regulatory role of
41
42 PC1, *ANKH* and *TNAP* on osteopontin (*SPP1/OPN*) [21], the expression of this
43
44 inhibitor of mineral crystal growth [22-23] was also investigated.
45
46
47
48
49
50
51

52 To address these questions, cells were cultured in standard (DMEM) and in calcifying
53
54 media (CM) (i.e. in the absence/presence of calcifying stimuli, respectively) and
55
56 evaluated at early and late time points (8 hours and 20 days, respectively). These two
57
58
59
60
61
62
63
64
65

1 time points were selected with the aim to investigate i) if changes occurring in cells well
2 before mineral deposition takes place could be indicative of a particular susceptibility of
3 cells to pro-calcifying stimuli, and ii) if the mineralizing environment provides a source
4 of signalling cues that may further influence cell phenotype.
5
6
7
8
9

10 **Materials and Methods**

11 **Cells**

12
13
14
15
16
17
18
19
20
21
22
23
24
25
26
27
28
29
30
31
32
33
34
35
36
37
38
39
40
41
42
43
44
45
46
47
48
49
50
51
52
53
54
55
56
57
58
59
60
61
62
63
64
65
Human dermal fibroblasts were available from the cell bank at the Cell-Lab “Paolo
Buffa” (University of Modena and Reggio Emilia, Modena - Italy), being collected
along the years in accordance with the guidelines of the ethical committee of the local
Faculty of Medicine. Briefly, fibroblasts were isolated from skin biopsies, cultured in
DMEM (Gibco, Grand Island, New York, USA) with 10% foetal bovine serum (FBS)
(Lonza, Basel, CH), and stored in liquid nitrogen until use [24].

Cells were from 8 clinically healthy females (41 ± 8 years), who did not exhibit any
sign of genetic, metabolic or connective tissue disorders, and from 10 patients affected
by PXE (44 ± 11 years), as demonstrated by clinical and biomolecular (ABCC6
mutations).

During all experimental procedures, fibroblasts from each individual were kept separate
and used between 3rd and 8th passages. In each experiment, control and pathologic cells
were used at the same passage. Cells were routinely cultured in 75cm² flasks (Nunc,
Roskilde, Denmark) with DMEM supplemented with 10% FBS, penicillin 100U/ml,
streptomycin 100 µg/ml and non-essential aminoacids 1X (Gibco). At confluence, all
fibroblasts were further cultured in standard medium (i.e. DMEM plus 10% FBS)

1 (DMEM) or in a more complex calcifying medium (CM) (i.e. DMEM supplemented
2
3 with 10mM β -glycerophosphate, 50 μ g/ml ascorbic acid and 10nM dexamethasone
4
5 (Sigma-Aldrich, Milan, Italy) [7]. Media were replaced three times a week.
6
7
8
9

10
11 ***In vitro* calcification: von Kossa staining and analysis by Environmental Scanning**
12
13 **Electron Microscopy (ESEM) and X-ray Energy Dispersive Spectroscopy (EDS).**

14
15 Fibroblasts were routinely cultured in six-well plates (BD-Falcon, Franklin Lakes, NJ)
16
17 up to confluence, when CM replaced the standard medium. At different time points,
18
19 cells were fixed in 4% paraformaldehyde, stained with 2.5% silver nitrate, placed under
20
21 a UV lamp for 30 min and rinsed with distilled water before treatment with 5% sodium
22
23 thiosulfate for two minutes. Von Kossa-positive (black) deposits were observed after
24
25 alcohol washes. Mineralized areas were quantified using the Image J software.
26
27 Experiments were conducted two times on all cell lines. At the same time, parallel
28
29 cultures were fixed in methanol for 10 min and then samples were observed with a
30
31 scanning electron microscope (FEI-ESEM Quanta 200) (FEI, Hillsboro, OR, USA) in
32
33 Low Vacuum mode. Solid State Detector (SSD) for backscattered electrons and Large
34
35 Field Detector (LFD) for secondary electrons were used for imaging. Microanalysis was
36
37 performed using X-EDS (Oxford - INCA-350)(Oxford Instruments, Austin, TX, USA)
38
39 [8].
40
41
42
43
44
45
46
47
48
49

50 **Tissue non specific alkaline phosphatase isozyme activity**

51
52 Fibroblasts were detached by enzymatic treatment and washed three times with PBS.
53
54 Cells were lysed by appropriate buffer containing 0.1% Triton X-100 (Sigma). Cell
55
56 lysate (20 μ L) was mixed with 100 μ L Tris-glycine buffer pH 10.3 (50mM Tris-HCl,
57
58
59
60
61
62
63
64
65

1 100mM glycine and 2mM MgCl₂) and 100 μL of p-nitrophenyl phosphate (Sigma). The
2
3 reaction mix was incubated at 37°C for 30 min and the reaction stopped by adding 50μl
4
5 of 3M NaOH. Absorbance was measured at 405 nm in a microplate reader. Enzymatic
6
7 activity was normalized to cell number. Control samples were set at 1. Experiments
8
9 were performed at least three times in triplicate.
10
11
12
13
14
15

16 **RNA preparation and quantitative real-time PCR (qRT-PCR).**

17
18 Confluent cells were cultured in DMEM or in CM for a short (8 hours, i.e. early CM)
19
20 and a longer length of time (20 days, i.e. late CM). At each time point, total cellular
21
22 RNA was extracted using RNeasy Protect cells Mini kit reagent (Qiagen, Valencia,
23
24 CA) following manufacturer's instructions. Quality and quantity of RNA were checked
25
26 with a spectrophotometer and by agarose gel electrophoresis. cDNA was then reverse-
27
28 transcribed from 3 μg of total RNA using superscript III Reverse Transcriptase
29
30 (Invitrogen, Monza, Italy). The amplification efficiency of primers was between 95%
31
32 and 105% [25]. Primers and their characteristics are listed in Table 1. A 3x diluted
33
34 cDNA sample was further amplified on a iCycler (BioRad, Segrate, Italy) using SYBR[®]
35
36 GreenER[™]qPCR SuperMix (Invitrogen), according to manufacturer's instructions.
37
38 Thermal cycling parameters were set at 95°C for 5 min, 40 cycles at 95°C for 15 sec, an
39
40 annealing temperature of 60°C for 30 sec, and of 72°C for 15 sec, followed by melting
41
42 curve analysis with a temperature ranging from 95°C to 55°C.
43
44
45
46
47
48
49

50 Gene expression in each sample was normalized to the expression of a housekeeping
51
52 gene (*CLK2*) that has been considered more suitable for determinations in dermal
53
54 fibroblasts [26]. Data were evaluated using the Pfaffl method [27] based on real-time
55
56
57
58
59
60
61
62
63
64
65

1 PCR efficiencies and compared with control cells. All qRT-PCR analyses were carried
2
3
4 out in triplicate.
5
6
7

8 **Protein extraction and Western blot (WB)** 9

10 Cells were homogenized in RIPA buffer with protease inhibitors (Sigma), centrifuged
11 and supernatants collected and stored at -80°C until analysis. Protein concentration was
12 and supernatants collected and stored at -80°C until analysis. Protein concentration was
13 measured in each sample according to Bradford assay [28] in order to load equal
14 amounts of proteins. After separation by 1D PAGE [18], proteins were transferred to
15 nitrocellulose and incubated with primary antibodies and thereafter with appropriate
16 horseradish peroxidase (HRP)-conjugated secondary antibodies (Abcam, Cambridge,
17 UK). The following primary antibodies against ANKH (Abcam), OPN (Abcam), PC1
18 (Santa Cruz Biotechnology, Santa Cruz, CA, USA), TNAP (Santa Cruz Biotechnology),
19 β actin (Sigma) and S100A4 (Abcam) were used. Experiments were performed at least
20 two times with all different cell lines.
21
22
23
24
25
26
27
28
29
30
31
32
33
34
35
36

37 **Statistical analysis** 38

39 Values were analysed by Mann Whitney and by Anova test with significance at $p < 0.05$.
40
41

42 Statistical data were obtained using GraphPad software 5.0 (San Diego, CA, USA).
43
44
45
46

47 **Results** 48

49 In order to induce mineralization *in vitro*, fibroblasts, as all other mesenchymal cells,
50 must be cultured in a pro-calcifying medium that provides cells of the appropriate
51 environment [20].
52
53
54
55
56
57
58
59
60
61
62
63
64
65

1 Mineral deposits were characterized by environmental scanning electron microscopy
2
3 (ESEM) and by micro-analytical analyses. By ESEM, calcification appeared as small
4
5 round precipitates that, with time in culture, coalesced into bigger areas of
6
7 mineralization (figure 1A, C, D). However, even after 40 days of culture in CM, mineral
8
9 deposits were not spread all over the cellular monolayer, but there were areas in which
10
11 cells were devoid of mineral precipitates (figure 1C, D). EDS spectra (figure 1B)
12
13 demonstrated that calcified areas were made of calcium and phosphate, whose
14
15 concentration was proportional to the presence and to the size of precipitates (figure 1
16
17 B), thus confirming that, although in an *in vitro* experimental model, the mineralization
18
19 process mimic what takes place *in vivo* [8]. Comparable data were obtained on cell
20
21 cultures from PXE patients (figure 1) and from control individuals (data not shown).

22
23 The extent of calcification was evaluated in control and PXE fibroblasts by light
24
25 microscopy after the von Kossa staining (figure 2). As already demonstrated [7], cells
26
27 cultured in DMEM never exhibited mineral deposition that, on the contrary, occurred in
28
29 the presence of CM starting around day 20 and then progressively increased (figure 2).
30
31 Crystal deposition was rather heterogeneous on the cellular monolayer with a variability
32
33 being highly dependent on cell strain. Consistently, some PXE fibroblast cell strains
34
35 exhibited a more extended surface area covered by mineral precipitates compared to
36
37 control cells (figure 2).

38
39
40
41
42
43
44
45
46
47
48
49
50
51
52
53
54
55
56
57
58
59
60
61
62
63
64
65
66
67
68
69
70
71
72
73
74
75
76
77
78
79
80
81
82
83
84
85
86
87
88
89
90
91
92
93
94
95
96
97
98
99
100
101
102
103
104
105
106
107
108
109
110
111
112
113
114
115
116
117
118
119
120
121
122
123
124
125
126
127
128
129
130
131
132
133
134
135
136
137
138
139
140
141
142
143
144
145
146
147
148
149
150
151
152
153
154
155
156
157
158
159
160
161
162
163
164
165
166
167
168
169
170
171
172
173
174
175
176
177
178
179
180
181
182
183
184
185
186
187
188
189
190
191
192
193
194
195
196
197
198
199
200
201
202
203
204
205
206
207
208
209
210
211
212
213
214
215
216
217
218
219
220
221
222
223
224
225
226
227
228
229
230
231
232
233
234
235
236
237
238
239
240
241
242
243
244
245
246
247
248
249
250
251
252
253
254
255
256
257
258
259
260
261
262
263
264
265
266
267
268
269
270
271
272
273
274
275
276
277
278
279
280
281
282
283
284
285
286
287
288
289
290
291
292
293
294
295
296
297
298
299
300
301
302
303
304
305
306
307
308
309
310
311
312
313
314
315
316
317
318
319
320
321
322
323
324
325
326
327
328
329
330
331
332
333
334
335
336
337
338
339
340
341
342
343
344
345
346
347
348
349
350
351
352
353
354
355
356
357
358
359
360
361
362
363
364
365
366
367
368
369
370
371
372
373
374
375
376
377
378
379
380
381
382
383
384
385
386
387
388
389
390
391
392
393
394
395
396
397
398
399
400
401
402
403
404
405
406
407
408
409
410
411
412
413
414
415
416
417
418
419
420
421
422
423
424
425
426
427
428
429
430
431
432
433
434
435
436
437
438
439
440
441
442
443
444
445
446
447
448
449
450
451
452
453
454
455
456
457
458
459
460
461
462
463
464
465
466
467
468
469
470
471
472
473
474
475
476
477
478
479
480
481
482
483
484
485
486
487
488
489
490
491
492
493
494
495
496
497
498
499
500
501
502
503
504
505
506
507
508
509
510
511
512
513
514
515
516
517
518
519
520
521
522
523
524
525
526
527
528
529
530
531
532
533
534
535
536
537
538
539
540
541
542
543
544
545
546
547
548
549
550
551
552
553
554
555
556
557
558
559
560
561
562
563
564
565
566
567
568
569
570
571
572
573
574
575
576
577
578
579
580
581
582
583
584
585
586
587
588
589
590
591
592
593
594
595
596
597
598
599
600
601
602
603
604
605
606
607
608
609
610
611
612
613
614
615
616
617
618
619
620
621
622
623
624
625
626
627
628
629
630
631
632
633
634
635
636
637
638
639
640
641
642
643
644
645
646
647
648
649
650
651
652
653
654
655
656
657
658
659
660
661
662
663
664
665
666
667
668
669
670
671
672
673
674
675
676
677
678
679
680
681
682
683
684
685
686
687
688
689
690
691
692
693
694
695
696
697
698
699
700
701
702
703
704
705
706
707
708
709
710
711
712
713
714
715
716
717
718
719
720
721
722
723
724
725
726
727
728
729
730
731
732
733
734
735
736
737
738
739
740
741
742
743
744
745
746
747
748
749
750
751
752
753
754
755
756
757
758
759
760
761
762
763
764
765
766
767
768
769
770
771
772
773
774
775
776
777
778
779
780
781
782
783
784
785
786
787
788
789
790
791
792
793
794
795
796
797
798
799
800
801
802
803
804
805
806
807
808
809
810
811
812
813
814
815
816
817
818
819
820
821
822
823
824
825
826
827
828
829
830
831
832
833
834
835
836
837
838
839
840
841
842
843
844
845
846
847
848
849
850
851
852
853
854
855
856
857
858
859
860
861
862
863
864
865
866
867
868
869
870
871
872
873
874
875
876
877
878
879
880
881
882
883
884
885
886
887
888
889
890
891
892
893
894
895
896
897
898
899
900
901
902
903
904
905
906
907
908
909
910
911
912
913
914
915
916
917
918
919
920
921
922
923
924
925
926
927
928
929
930
931
932
933
934
935
936
937
938
939
940
941
942
943
944
945
946
947
948
949
950
951
952
953
954
955
956
957
958
959
960
961
962
963
964
965
966
967
968
969
970
971
972
973
974
975
976
977
978
979
980
981
982
983
984
985
986
987
988
989
990
991
992
993
994
995
996
997
998
999
1000

It has been reported that culturing cells in CM affects mesenchymal cell phenotype by changing the expression of cytoskeletal and calcium binding proteins [29-30], actin and S100A4 were therefore analysed by Western blot on fibroblasts cultured in DMEM and in CM at early and late time points (8 hours and 20 days, respectively). Both actin and S100A4 were expressed in all culture conditions and in all cell strains. Interestingly,

1 their expression significantly decreased after several days in CM (figure 3),
2
3 demonstrating that these proteins were down-regulated when cells were actively
4
5 involved in matrix calcification and that fibroblasts modified their phenotype in a
6
7 mineralized environment.
8
9

10
11 Since we have demonstrated that TNAP activity is up-regulated in PXE, it was
12
13 suggested that phosphate metabolism may be locally altered, thus contributing to the
14
15 mineralization process [7]. Pyrophosphate-related gene and protein expressions were
16
17 therefore investigated on control and PXE fibroblasts. Cells were cultured in a pro-
18
19 calcifying environment in order to disclose, in an *in-vitro* system, whether PXE
20
21 compared to control fibroblasts were more responsive to mineralization stimuli.
22
23

24
25 No significant differences in the expression of *ANKH/ANKH*, *ENPPI/PC1*,
26
27 *ALPL/TNAP* were detected at mRNA and protein levels in all cell strains cultured in
28
29 DMEM (data not shown), in agreement with the inability of cells to calcify in these *in*
30
31 *vitro* experimental conditions. By contrast, control fibroblasts cultured in CM at early
32
33 and late time points revealed that, compared to basal levels of expression (i.e. confluent
34
35 cells in DMEM), *ENPPI/PC1* expression was significantly up-regulated at a late time
36
37 point, when mineralization takes place (figure 4). Differences in *ANKH*, and *ALPL*
38
39 expression were negligible at all time points (figure 4).
40
41
42
43

44
45 A similar trend was observed also in PXE fibroblasts (figure 5), however, compared to
46
47 basal levels, PC1 expression was significantly down- and up-regulated at early and late
48
49 time points, respectively.
50

51
52 Comparison of control and PXE fibroblasts (figure 6) revealed that PXE cells, at the
53
54 early time point in CM, had a significant down-regulation of PC1 expression, whereas
55
56 values were similarly up-regulated in all cell strains at later time points (figure 6B).
57
58
59
60
61
62
63
64
65

1 Differences in ANKH expression were negligible in all experimental conditions (figure
2
3 6A). As already suggested [7], the mineralization process, at least *in vitro*, is associated
4
5 to a progressive up-regulation of TNAP activity. In agreement with these observations,
6
7 in the present study enzyme activity was progressively up-regulated in all cell strains
8
9 (figure 6C), but values were significantly higher in PXE compared to control
10
11 fibroblasts. Furthermore, since calcification is the results of a ratio between inducers
12
13 and inhibitors of the mineralization process, including those regulating PPi, in figure 6D
14
15 is shown the ratio between factors involved in PPi production and transport and factors
16
17 that utilize PPi as a substrate for Pi release. This ratio, taken as an indicator of the
18
19 mineralization potential of cells, appeared to progressively decrease as mineralization
20
21 takes place in both cell lines. Interestingly, PXE cells have significantly lower values
22
23 than control fibroblasts (figure 6D).

24
25 In the extracellular milieu, osteopontin acts as a calcification inhibitor whose expression
26
27 can be modulated by phosphate and pyrophosphate availability and by TNAP activity
28
29 [21, 31-32]. *SPPI* expression was significantly down-regulated in control and PXE
30
31 fibroblasts at early time point in CM (figure 7A, C). Moreover, OPN expression, at
32
33 early time point, was significant reduced in PXE compared to control cells (figure 7E),
34
35 but it appeared increased up to basal levels in all cell strains at late compared to early
36
37 time points (figure 7B, D).

38 **Discussion**

39
40 Pseudoxanthoma elasticum (PXE) is a genetic disease characterized by progressive
41
42 ectopic calcification in soft connective tissues, including the skin [6]. In these patients,
43
44 plasma levels of calcium and phosphate are normal, suggesting that other mechanisms
45
46
47
48
49
50
51
52
53
54
55
56
57
58
59
60
61
62
63
64
65

1 are involved in the control of mineralization [7]. We have previously shown that, in the
2
3 absence of any altered value in the circulation, TNAP activity is up-regulated in PXE
4
5 fibroblasts and that levamisole, a specific TNAP inhibitor, suppresses mineralization *in*
6
7 *vitro*. Therefore, it was hypothesized that in these cells, in addition to impaired MGP
8
9 carboxylation, a modified PPi metabolism contributes to soft connective tissue
10
11 calcification [7]. In agreement with this hypothesis, fibroblasts, being mesenchymal
12
13 cells responsible for the correct amount and the appropriate quality of cellular and
14
15 extracellular proteins, regulate the local balance of mineralization inducers and
16
17 inhibitors and therefore can be advantageously used as an *in vitro* experimental model
18
19
20
21
22
23 [16].
24

25 The present work aimed to study the effects of a pro-calcifying environment on control
26
27 and PXE dermal fibroblasts by specifically looking at changes in the expression of
28
29 genes and proteins involved in PPi metabolism. In particular, we have investigated the
30
31 expression of PC1 that generates PP_i from nucleoside triphosphates, of ANKH that
32
33 mediates intracellular to extracellular PPi transport and of TNAP that hydrolyses PPi
34
35
36
37 [21].
38
39

40 As already demonstrated, a standard cell culture environment is unsuitable to promote
41
42 mineralization *in vitro*, independently from the ability of cells to induce calcification *in*
43
44 *vivo* [33]. Consistently, in the present study, even after a long time of culture in DMEM,
45
46 fibroblasts maintained their phenotype and mineralization never occurred. Moreover,
47
48 the expression of mineralization-related genes/proteins regulating PPi metabolism
49
50 exhibited negligible differences at various time points in culture as well as between
51
52 control and PXE fibroblasts.
53
54
55
56
57
58
59
60
61
62
63
64
65

1 Therefore cells were cultured in an appropriate pro-calcifying environment that
2 provides the stimuli necessary to induce the mineralization process *in vitro* [20, 34]. In
3 order to avoid the passive mineral deposition that, upon inorganic phosphate
4 supplementation, was demonstrated *in vitro*, even without cells [35], a complex medium
5 containing ascorbic acid, β -glycerophosphate and dexamethasone was used [7, 20].
6
7 When cells were cultured in this pro-calcifying environment, there was a progressive
8 hydroxyapatite deposition, even though mineralization was not homogeneously
9 distributed over the monolayer. Calcification, in fact, is not a passive phenomenon and
10 cells, even in the same environment, are actively and differently responsive to
11 mineralization stimuli [20]. Present findings could explain why, in PXE, calcification
12 occurs in specific areas in the absence of higher circulating levels of calcium and
13 phosphate and without any evidence of inflammation or cell death.
14
15

16 The continuous presence of pro-calcifying stimuli is associated to cellular phenotypic
17 changes [29-30]. In the present study, at later time points, fibroblasts reveal a
18 cytoskeletal reorganization with reduced actin expression. Moreover, S100A4, a
19 calcium-binding protein known to exert an inhibitory role on mineral deposition [29],
20 was decreased to undetectable levels when the mineralized matrix is formed, indicating
21 that calcification comes by changes in fibroblasts' behaviour.
22
23

24 Surprisingly, at early time points, before mineralization and before changes in
25 fibroblasts' phenotype, PXE compared to control cells were characterized by
26 significantly reduced expression of PC1 and increased TNAP activity. These changes
27 act in synergy reducing the availability of PPI, a condition that represents a prerequisite
28 for the mineralization process to take place [36]. Like PPI, OPN is a potent inhibitor of
29 hydroxyapatite crystal growth [22-23]. Moreover, it has been demonstrated in
30
31
32
33
34
35
36
37
38
39
40
41
42
43
44
45
46
47
48
49
50
51
52
53
54
55
56
57
58
59
60
61
62
63
64
65

1 osteoblasts that PPI is a specific signal for the induction of OPN expression [32] and
2
3 that PPI deficiency in *ENPPI*^{-/-} mice results in OPN deficiency [31]. In agreement with
4
5 these observations a down-regulation of OPN has been demonstrated in PXE
6
7 fibroblasts.
8
9

10 The altered expression of PPI-related proteins, as clearly shown at the early time point,
11
12 indicates that PXE compared to control fibroblasts are particularly sensitive to a pro-
13
14 calcifying environment.
15
16

17 At late time points, in a mineralizing environment, both control and PXE cells exhibited
18
19 a significant up-regulation of *ENPPI*/*PC1* as an attempt to counteract the mineralization
20
21 process. However, PPI is a substrate for TNAP, whose activity was significantly up-
22
23 regulated with time in CM, especially in PXE fibroblasts. After 20 days of culture,
24
25 compared to the early time point in CM, OPN was up-regulated towards basal levels of
26
27 expression.
28
29

30 It has to be noted that at later time points, after several days in the presence of pro-
31
32 calcifying stimuli, the different response of control and PXE fibroblasts, observed at
33
34 early time points, was no further detectable, being masked as a consequence of a
35
36 secondary response of fibroblasts to the mineralized environment and/or of cumulative
37
38 effects due to the extended permanence in CM.
39
40
41
42
43

44 We are aware that these culture conditions represent an artificial system, as are all *in*
45
46 *vitro* models, since they should mimic in shorter times (few days or weeks) what takes
47
48 place *in vivo* along the years under complex regulatory mechanisms active at both local
49
50 and systemic levels. Never the less, results demonstrate that *in vitro*, if an adequate
51
52 availability of calcifying stimuli are provided to cells, fibroblasts promote mineral
53
54 deposition. These events are only partly dependent of TNAP activity, since enzyme up-
55
56
57
58
59
60
61
62
63
64
65

1 regulation *per se* is not sufficient to favour the calcification process, as demonstrated for
2
3 instance in cells cultured in standard medium [7], even in the presence of higher levels
4
5 of enzyme activity. Never the less, even in PXE fibroblasts cultured in DMEM, the ratio
6
7 between inducers and inhibitors of PPi metabolism is already shifted towards a pro-
8
9 calcifying balance, suggesting that these cells may be more susceptible to
10
11 mineralization stimuli compared to control fibroblasts. Mineralization takes place in all
12
13 cell strains after several days in CM, when threshold levels of calcification inducers
14
15 exceed that of inhibitors. However, PXE fibroblasts, although with a variability
16
17 depending on cell strain, showed higher amount of mineralization, supporting the
18
19 hypothesis that these cells are more responsive to calcifying stimuli.
20
21
22
23
24

25 Moreover, it has to be underlined that in PXE, both *in vivo* and *in vitro*, the lower
26
27 amount of carboxylated-MGP causes soft connective tissues being devoid of an
28
29 appropriate and effective protection against mineral deposition [7, 17-18]. Therefore, in
30
31 PXE, both reduced MGP carboxylation and altered PPi metabolism may synergistically
32
33 contribute to ectopic calcification.
34
35
36

37 In conclusion, mineralization may depend on fibroblast's subtype behaviour and
38
39 responsiveness [37], on matrix composition (both in terms of quality and quantity of
40
41 secreted proteins as well as on proteolytic activities) [6, 38-40], on local calcium and
42
43 phosphate availability [6] and on the ratio between mineralization inducers and
44
45 inhibitors [7, 16]. Results demonstrate that changes in PPi metabolism are present in
46
47 PXE fibroblasts. Moreover, the altered balance between factors promoting or reducing
48
49 PPi availability is already present in standard culture conditions, thus turning PXE
50
51 fibroblasts into cells more responsive to pro-calcifying stimuli compared to controls.
52
53
54
55
56
57 Therefore, we propose that circulating factors abnormally released in the circulation
58
59
60
61
62
63
64
65

1 [10-12] are likely responsible for the development of a pro-calcifying environment that
2
3 progressively induce responsive fibroblasts to alter their phenotype and to promote the
4
5 mineralization process.
6
7
8
9

10 **Acknowledgments**

11
12 Work supported by grant from FCRM-Fondazione Cassa di Risparmio di Modena
13
14 (Ectocal). Authors gratefully acknowledge the technical contribution of Sonia Costa
15
16 from the Department of Life Sciences and Massimo Tonelli from CIGS (University of
17
18 Modena and Reggio Emilia).
19
20
21
22
23
24

25 **Conflict of Interests**

26
27 Authors declare no conflict of interests.
28
29
30
31
32
33
34
35
36
37
38
39
40
41
42
43
44
45
46
47
48
49
50
51
52
53
54
55
56
57
58
59
60
61
62
63
64
65

1 **References**
2
3

- 4 [1] Murshed M, McKee MD: Molecular determinants of extracellular matrix
5 mineralization in bone and blood vessels. *Curr Opin Nephrol Hypertens* 2010;19:
6 359-365.
7
8
9
10
11 [2] Giachelli CM: Ectopic calcification: gathering hard facts about soft tissue
12 mineralization. *Am J Pathol* 1999;154:671-675.
13
14
15 [3] Golub EE: Biomineralization and matrix vesicles in biology and pathology. *Semin*
16 *Immunopathol* 2011;33:409-417.
17
18
19 [4] O'Neill WC, Lomashvili KA: Recent progress in the treatment of vascular
20 calcification. *Kidney Int* 2010;78:1232-1239.
21
22
23 [5] Gheduzzi D, Sammarco R, Quaglino D, Bercovitch L, Terry S, Taylor W, et al.:
24 Extracutaneous ultrastructural alterations in pseudoxanthoma elasticum.
25 *Ultrastruct Pathol* 2003;27:375-384.
26
27
28 [6] Quaglino D, Boraldi F, Annovi G, Ronchetti I: The Multifaceted Complexity of
29 Genetic Diseases. A Lesson from Pseudoxanthoma Elasticum. In *Advances in the*
30 *study of genetic disorders*. Edited by K. Ikehara. InTech, Rijeka. 2011, pp.289-
31 318.
32
33 [7] Boraldi F, Annovi G, Vermeer C, Schurgers LJ, Trenti T, Tiozzo R, et al.: Matrix
34 Gla Protein and Alkaline Phosphatase Are Differently Modulated in Human
35 Dermal Fibroblasts from PXE Patients and Controls. *J Invest Dermatol*
36 2013;133:946-954.
37
38
39 [8] Boraldi F, Tonelli M, Gheduzzi D, Pasquali-Ronchetti I, Quaglino D:
40 Identification of mineralized elastic fibers on wet samples by SEM. *Microsc Res*
41 *Tech* 2005;7:296-299.
42
43
44
45
46
47
48
49
50
51
52
53
54
55
56
57
58
59
60
61
62
63
64
65

- 1 [9] Le-Saux O, Urban Z, Tschuch C, Csiszar K, Bacchelli B, Quaglino D, et al.:
2
3 Mutations in a gene encoding an ABC transporter cause pseudoxanthoma
4
5 elasticum. *Nat Genet* 2000;25:223-227.
6
7
8 [10] Le Saux O, Bunda S, VanWart CM, Douet V, Got L, Martin L, et al.: Serum
9
10 factors from pseudoxanthoma elasticum patients alter elastic fiber formation in
11
12 vitro. *J Invest Dermatol* 2006;126:1497-1505.
13
14
15 [11] Uitto J, Pulkkinen L, Ringpfeil F: Molecular genetics of pseudoxanthoma
16
17 elasticum: a metabolic disorder at the environment-genome interface? *Trends*
18
19 *Mol Med* 2001;7:13-17.
20
21
22 [12] Jiang Q, Endo M, Dibra F, Wang K, Uitto J: Pseudoxanthoma elasticum is a
23
24 metabolic disease. *J Invest Dermatol* 2009;129:348-354.
25
26
27 [13] Toussaint ND : Extracellular matrix calcification in chronic kidney disease. *Curr*
28
29 *Opin Nephrol Hypertens* 2011;20:360-368.
30
31
32 [14] Herrmann M, Kinkeldey A, Jahnen-Dechent W: Fetuin-A function in systemic
33
34 mineral metabolism. *Trends Cardiovasc Med* 2012;22:197-201.
35
36
37 [15] Schlieper G, Westenfeld R, Brandenburg V, Ketteler M: Inhibitors of
38
39 calcification in blood and urine. *Semin Dial* 2007;20:113-121.
40
41
42 [16] Ronchetti I, Boraldi F, Annovi G, Cianciulli P, Quaglino D: Fibroblast
43
44 involvement in soft connective tissue calcification. *Front Genet* 2013;4:22.
45
46
47 [17] Gheduzzi D, Boraldi F, Annovi G, Paolinelli-DeVincenzi C, Schurgers LJ,
48
49 Vermeer C, et al.: Matrix Gla protein is involved in elastic fiber calcification in
50
51 the dermis of pseudoxanthoma elasticum patients. *Lab Invest* 2007;87:998-1008.
52
53
54 [18] Boraldi F, Annovi G, Guerra D, Paolinelli-DeVincenzi C, Garcia-Fernandez MI,
55
56 Panico F, et al.: Fibroblast protein profile analysis highlights the role of
57
58
59
60
61
62
63
64
65

1 oxidative stress and vitamin K recycling in the pathogenesis of pseudoxanthoma
2 elasticum, *Proteomics – Clin Appl* 2009;3:1084-1098.

- 3
4
5
6 [19] Schurgers LJ, Cranenburg EC, Vermeer C: Matrix Gla-protein: the calcification
7 inhibitor in need of vitamin K. *Thromb Haemost* 2008;100:593-603.
8
9
10
11 [20] Buranasinsup S, Sila-Asna M, Bunyarativej N, Bunyaratvej A: In vitro
12 osteogenesis from human-skin-derived precursors cells. *Dev Growth Differ* 2006;
13 48:263–269.
14
15
16
17 [21] Harmey D, Hessle L, Narisawa S, Johnson KA, Terkeltaub R, Millán JL:
18 Concerted regulation of inorganic pyrophosphate and osteopontin by *akp2*, *enpp1*,
19 and *ank*: an integrated model of the pathogenesis of mineralization disorders. *Am*
20 *J Pathol* 2004;164:1199-1209.
21
22
23
24
25
26
27 [22] Boskey AL, Maresca M, Ullrich W, Doty SB, Butler WT, Prince CW:
28 Osteopontin-hydroxyapatite interactions in vitro: inhibition of hydroxyapatite
29 formation and growth in a gelatin-gel. *Bone Miner* 1993;22:147-159.
30
31
32
33
34 [23] Wada T, McKee MD, Steitz S, Giachelli CM: Calcification of vascular smooth
35 muscle cell cultures: Inhibition by osteopontin. *Circ Res* 1999;84:166–178.
36
37
38
39 [24] Quaglino D, Boraldi F, Barbieri D, Croce A, Tiozzo R, Pasquali-Ronchetti I:
40 Abnormal phenotype of in vitro dermal fibroblasts from patients with
41 Pseudoxanthoma elasticum (PXE). *Biochim Biophys Acta* 2000;1501:51-62.
42
43
44
45
46
47 [25] Klatte M, Bauer P: Accurate Real-time Reverse Transcription quantitative PCR.
48 In Plant Signal Transduction. Edited by T. Pfannschmidt. Humana Press, 2009,
49 pp. 61-77.
50
51
52
53
54
55
56
57
58
59
60
61
62
63
64
65

- 1 [26] deBrouwer AP, van Bokhoven H, Kremer H: Comparison of 12 reference genes
2 for normalization of gene expression levels in Epstein-Barr virus-transformed
3 lymphoblastoid cell lines and fibroblasts. *Mol Diagn Ther* 2006;10:197-204.
4
5
6
7
8 [27] Pfaffl MW: A new mathematical model for relative quantification in real-time
9 RT-PCR. *Nucleic Acids Res* 2001;29:e45.
10
11
12
13 [28] Bradford MM: A rapid and sensitive method for the quantitation of microgram
14 quantities of protein utilizing the principle of protein-dye binding. *Anal Biochem*
15 1976;72:248-254.
16
17
18
19
20 [29] Duarte WR, Shibata T, Takenaga K, Takahashi E, Kubota K, Ohya K, et al.:
21 S100A4: a novel negative regulator of mineralization and osteoblast
22 differentiation. *J Bone Miner Res* 2003;18:493-501.
23
24
25
26
27 [30] Rodríguez JP, González M, Ríos S, Cambiazo V: Cytoskeletal organization of
28 human mesenchymal stem cells (MSC) changes during their osteogenic
29 differentiation. *J Cell Biochem* 2004;93:721-731.
30
31
32
33
34 [31] Johnson K, Goding J, van Etten D, Sali A, Hu SI, Farley D, et al.: Linked
35 deficiencies in extracellular PP(i) and osteopontin mediate pathologic calcification
36 associated with defective PC-1 and ANK expression. *J Bone Miner Res*
37 2003;18:994–1004.
38
39
40
41
42 [32] Addison WN, Azari F, Sørensen ES, Kaartinen MT, McKee MD: Pyrophosphate
43 inhibits mineralization of osteoblast cultures by binding to mineral, up-regulating
44 osteopontin, and inhibiting alkaline phosphatase activity. *J Biol Chem* 2007;282:
45 15872-15883.
46
47
48
49
50
51
52
53
54
55
56
57
58
59
60
61
62
63
64
65

- 1 [33] Irie K, Zalzal S, Ozawa H, McKee MD, Nanci A: Morphological and
2
3 immunocytochemical characterization of primary osteogenic cell cultures derived
4
5 from fetal rat cranial tissue. Anat Rec 1998 ;252:554–567.
6
7
- 8 [34] Kasugai S, Shibata S, Suzuki S, Susami T, Ogura H: Characterization of a system
9
10 of mineralized-tissue formation by rat dental pulp cells in culture. Arch Oral Biol
11
12 1993;38:767–769.
13
14
- 15 [35] Foster BL, Soenjaya Y, Nociti FH Jr, Holm E, Zervas PM, Wimer HF, et al.:
16
17 Deficiency in acellular cementum and periodontal attachment in bsp null mice. J
18
19 Dent Res 2013;92:166-172.
20
21
- 22 [36] Terkeltaub R: Inorganic pyrophosphate (PPi) generation and disposition in
23
24 pathophysiology. Am J Physiol Cell Physiol 2001;281:C1–C11.
25
26
- 27 [37] Chang HY, Chi JT, Dudoit S, Bondre C, van de Rijn M, Botstein D, et al.:
28
29 Diversity, topographic differentiation, and positional memory in human
30
31 fibroblasts. Proc Natl Acad Sci U S A 2002;99:12877-12882.
32
33
- 34 [38] Passi A, Albertini R, Baccarani-Contri M, deLuca G, dePaepe A, Pallavicini G, et
35
36 al.: Proteoglycan alterations in skin fibroblast cultures from patients affected with
37
38 pseudoxanthoma elasticum. Cell Biochem Funct 1996;14:111-120.
39
40
- 41 [39] Baccarani-Contri M, Boraldi F, Taparelli F, De Paepe A, Pasquali-Ronchetti I:
42
43 Matrix proteins with high affinity for calcium ions are associated with
44
45 mineralization within the elastic fibers of pseudoxanthoma elasticum dermis. Am
46
47 J Pathol 1996;148:569-577.
48
49
- 50 [40] Quaglino D, Sartor L, Garbisa S, Boraldi F, Croce A, Passi A, et al.: Dermal
51
52 fibroblasts from pseudoxanthoma elasticum patients have raised MMP-2
53
54 degradative potential. Biochim Biophys Acta 2005;1741:42-47.
55
56
57
58
59
60
61
62
63
64
65

1 **Legend to figures**
2
3
4
5

6 **Fig. 1. Characterization of mineral deposits in dermal fibroblasts cultured in**
7 **calcifying medium.** Mineral deposits are visualized by ESEM on PXE fibroblasts after
8 20 (A) and 40 days (C, D). Panel D shows, at higher magnification, the distribution of
9 hydroxyapatite bright deposits (*) on the surface of elongated fibroblasts (arrow). EDS
10 spectra (B) demonstrate that mineral deposits are made of calcium (Ca) and phosphate
11 (P), whose levels are proportional to the size/amount of calcification.
12
13
14
15
16
17
18
19
20
21
22

23 **Fig. 2. Mineral deposition in control and PXE dermal fibroblasts cultured in**
24 **calcifying medium.** The extent of mineralization has been evaluated after von Kossa
25 staining on control and PXE fibroblast cell cultures at different time points (from 10 up
26 to 40 days). The percentage of calcified areas on the whole monolayer measured in each
27 strain at same passages is shown. The increase of mineralization in control and PXE
28 fibroblasts is time-dependent, as demonstrated by linear regression analysis (insert).
29
30
31
32
33
34
35
36
37
38
39

40 **Fig. 3. Western blot for actin and S100A4 protein expression.** Confluent cells were
41 cultured for 8 hours (early time) and 20 days (late time) in standard (DMEM) and in
42 calcifying (CM) media. Control (C) and PXE (P) fibroblasts at same passages are
43 compared. A representative Western blot is shown in upper panel, whereas mean values
44 from all cells strains \pm SE are shown in histograms. ** $p < 0.01$; De (early time point in
45 DMEM), CMe (early time point in CM); Dl (late time point in DMEM), Cml (late time
46 point in CM).
47
48
49
50
51
52
53
54
55
56
57
58
59
60
61
62
63
64
65

1 **Fig. 4. PPI-related gene and protein expression in control fibroblasts.** RNA and
2
3 protein expression of progressive ankylosis protein homolog (ANKH/ANKH),
4
5 ectonucleotide pyrophosphatase/phosphodiesterase family member 1 (ENPPI/PC1) and
6
7 of tissue-nonspecific alkaline phosphatase isozyme (ALPL/TNAP) were evaluated by
8
9 RT-PCR and Western blot in control fibroblasts at confluence in standard medium
10
11 (DMEM) (set at 1) and in calcifying medium (CM) for 8 hours (early) and 20 days (late).
12
13 Data from two experiments performed in triplicate with all fibroblasts cell lines are
14
15 expressed as box-and-whisker plots showing the range of mRNA and protein expression
16
17 values. The horizontal line shows the median value for each experimental condition,
18
19 boxes represent the inter-quartile range and whiskers indicate the full extent of
20
21 minimum/maximum values. ** p<0.01 late vs. early times in CM; ## p<0.01 CM vs.
22
23 DMEM.
24
25
26
27
28
29
30
31
32

33 **Fig. 5. PPI-related gene and protein expression in PXE fibroblasts.** mRNA and
34
35 protein expression of progressive ankylosis protein homolog (ANKH/ANKH),
36
37 ectonucleotide pyrophosphatase/phosphodiesterase family member 1 (ENPPI/PC1) and
38
39 of alkaline phosphatase tissue-nonspecific isozyme (ALPL/TNAP) were evaluated by
40
41 RT-PCR and Western blot in PXE fibroblasts at confluence in standard medium
42
43 (DMEM) (set at 1) and in calcifying medium (CM) for 8 hours (early) and 20 days
44
45 (late). Data from two experiments performed in triplicate with all fibroblasts cell lines
46
47 are expressed as box-and-whisker plots showing the range of mRNA and protein
48
49 expression values. The horizontal line shows the median value for each experimental
50
51 condition, boxes represent the inter-quartile range and whiskers indicate the full extent
52
53
54
55
56
57
58
59
60
61
62
63
64
65

1 of minimum/maximum values. ** p<0.01 late vs. early times in CM; # p<0.05, ##
2
3
4 p<0.01 CM vs. DMEM.

5
6
7
8 **Fig. 6. PPI-related proteins in control and PXE fibroblasts.** Control and PXE
9
10 fibroblasts were cultured in standard medium (DMEM) (set at 1) and in calcifying
11 medium (CM) for 8 hours (early) and 20 days (late). Expression levels of progressive
12 ankylosis protein homolog (ANKH) (A) and of ectonucleotide
13 pyrophosphatase/phosphodiesterase family member 1 (PC-1) (B), evaluated by Western
14 blot, are expressed as box-and-whisker plots. The horizontal line shows the median
15 value for each experimental condition, boxes represent the inter-quartile range and
16 whiskers indicate the full extent of minimum/maximum values. TNAP activity (C) and
17 the ratio (D) between factors increasing (PC1 and ANKH) and reducing (TNAP) PPI
18 availability are expressed as mean values \pm SE. All data are from two experiments
19 performed in triplicate with all fibroblasts cell lines at same passages. * p<0.05, **
20 p<0.01, *** p<0.001 late vs. early time point in CM; # p<0.05, ## p<0.01, ### p<0.001
21 CM vs. DMEM; § p<0.05, §§ p<0.01 PXE vs. Control in the same culture condition.

22
23
24
25
26
27
28
29
30
31
32
33
34
35
36
37
38
39
40
41
42
43 **Fig. 7. Osteopontin gene and protein expression in control and PXE fibroblasts.**
44
45 mRNA and protein expression of osteopontin (SPPI/OPN) were evaluated by RT-PCR
46 and Western blot in control (A, B) and in PXE (C, D) fibroblasts cultured in standard
47 medium (DMEM) (set at 1) and in calcifying medium (CM) for 8 hours (early) and 20
48 days (late). Comparison of OPN expression in control and in PXE fibroblasts at same
49 passages is shown in panel E. Data from two experiments performed in triplicate with
50 all fibroblasts cell lines are expressed as box-and-whisker plots. The horizontal line

1 shows the median value for each experimental condition, boxes represent the inter-
2
3 quartile range and whiskers indicate the full extent of minimum/maximum values. *
4
5
6 p<0.05 late vs. early time points in CM; # p<0.05 CM vs. DMEM; § p<0.05 PXE vs.
7
8 Control in the same culture condition.
9

10
11
12
13
14
15
16
17
18
19
20
21
22
23
24
25
26
27
28
29
30
31
32
33
34
35
36
37
38
39
40
41
42
43
44
45
46
47
48
49
50
51
52
53
54
55
56
57
58
59
60
61
62
63
64
65

Figure 1
[Click here to download high resolution image](#)

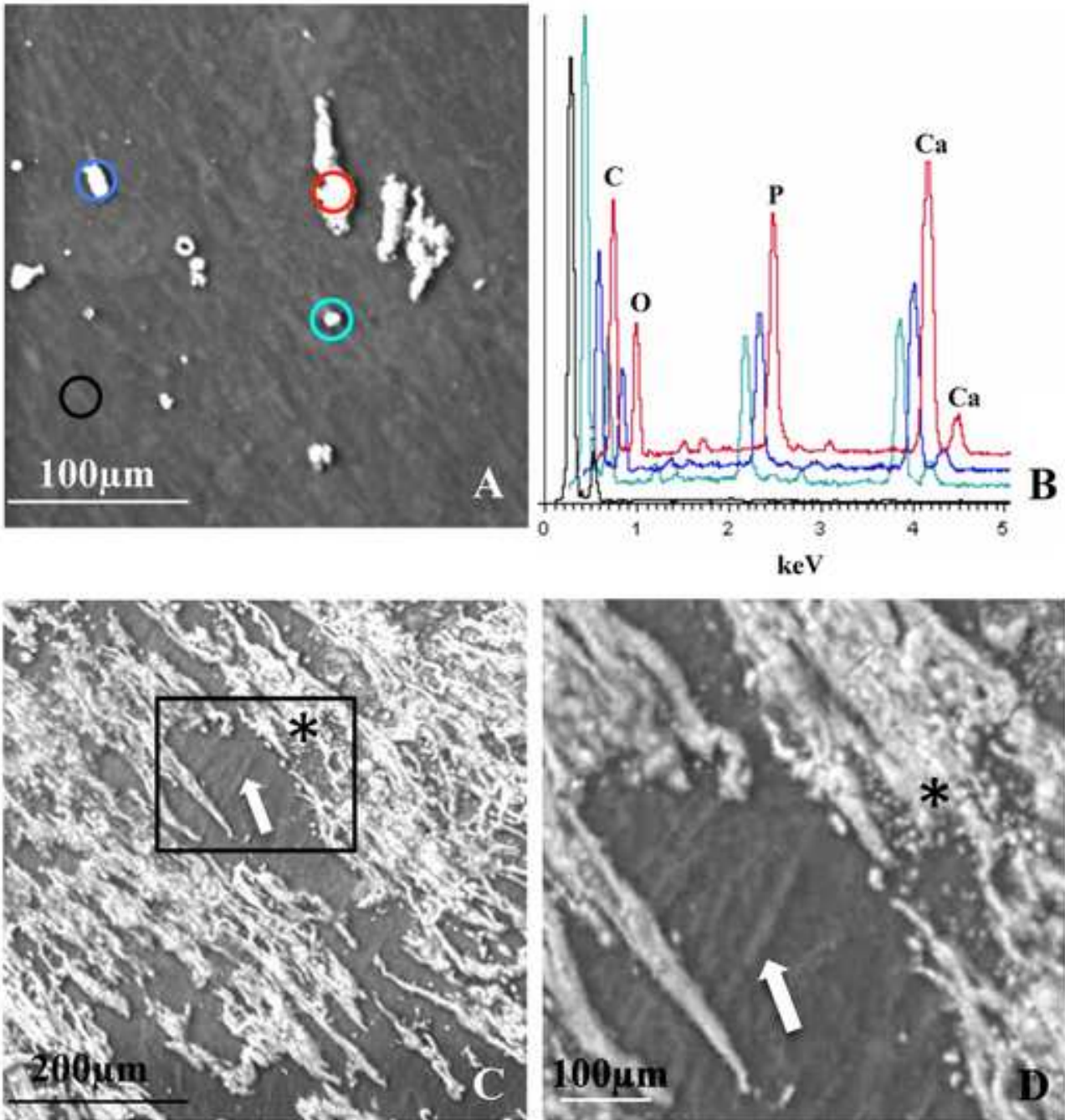


Figure 3
[Click here to download high resolution image](#)

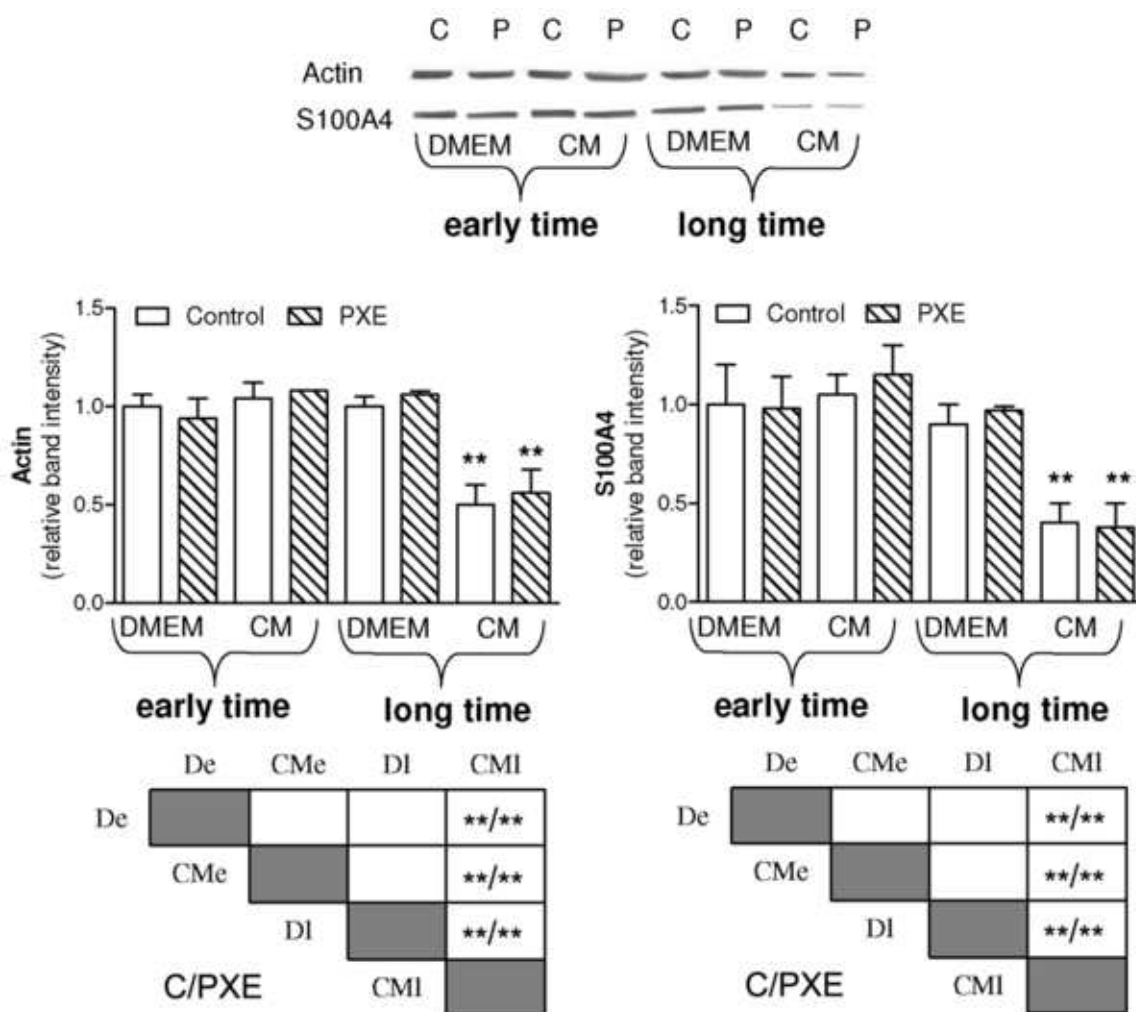


Figure 4
[Click here to download high resolution image](#)

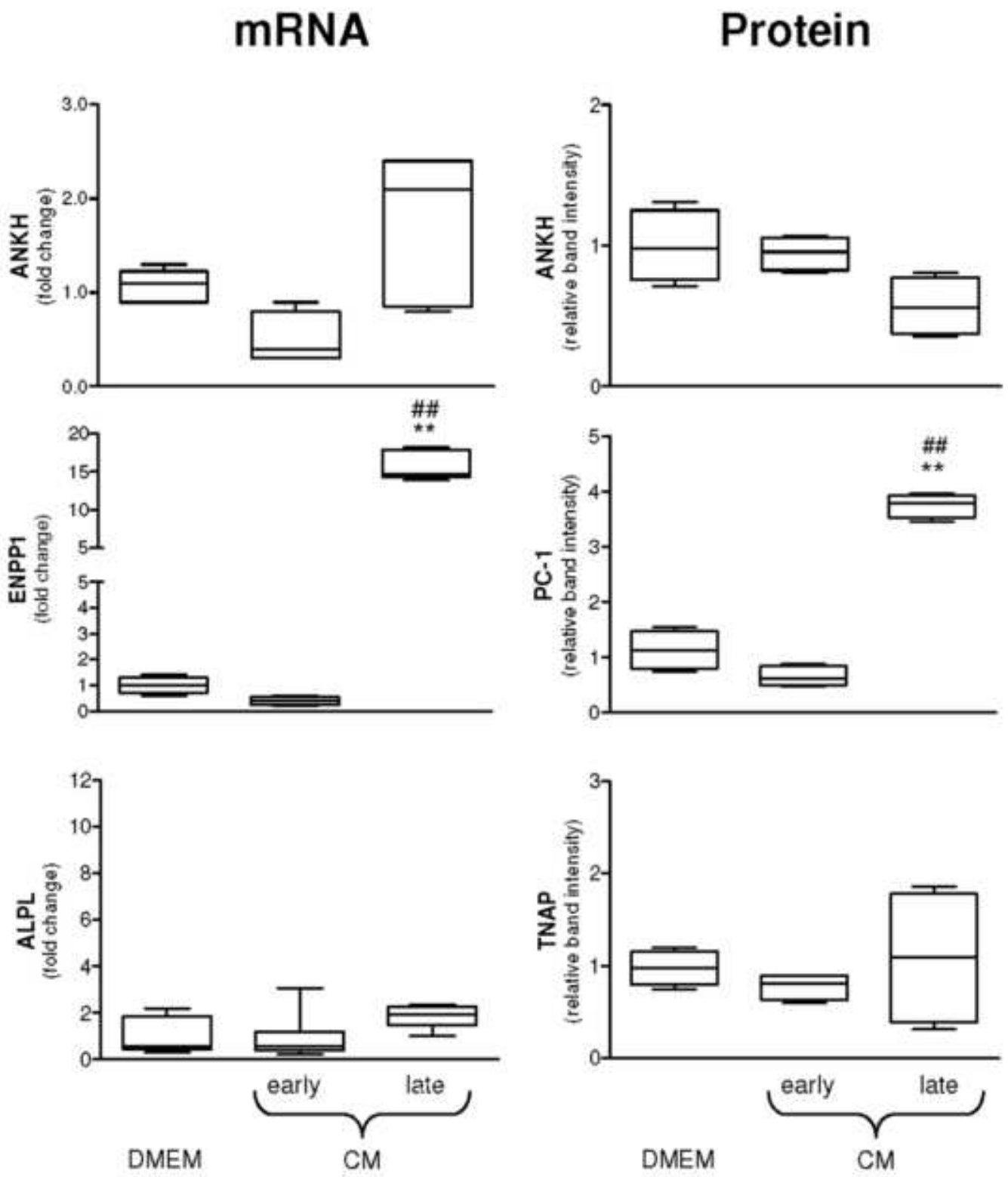


Figure 5
[Click here to download high resolution image](#)

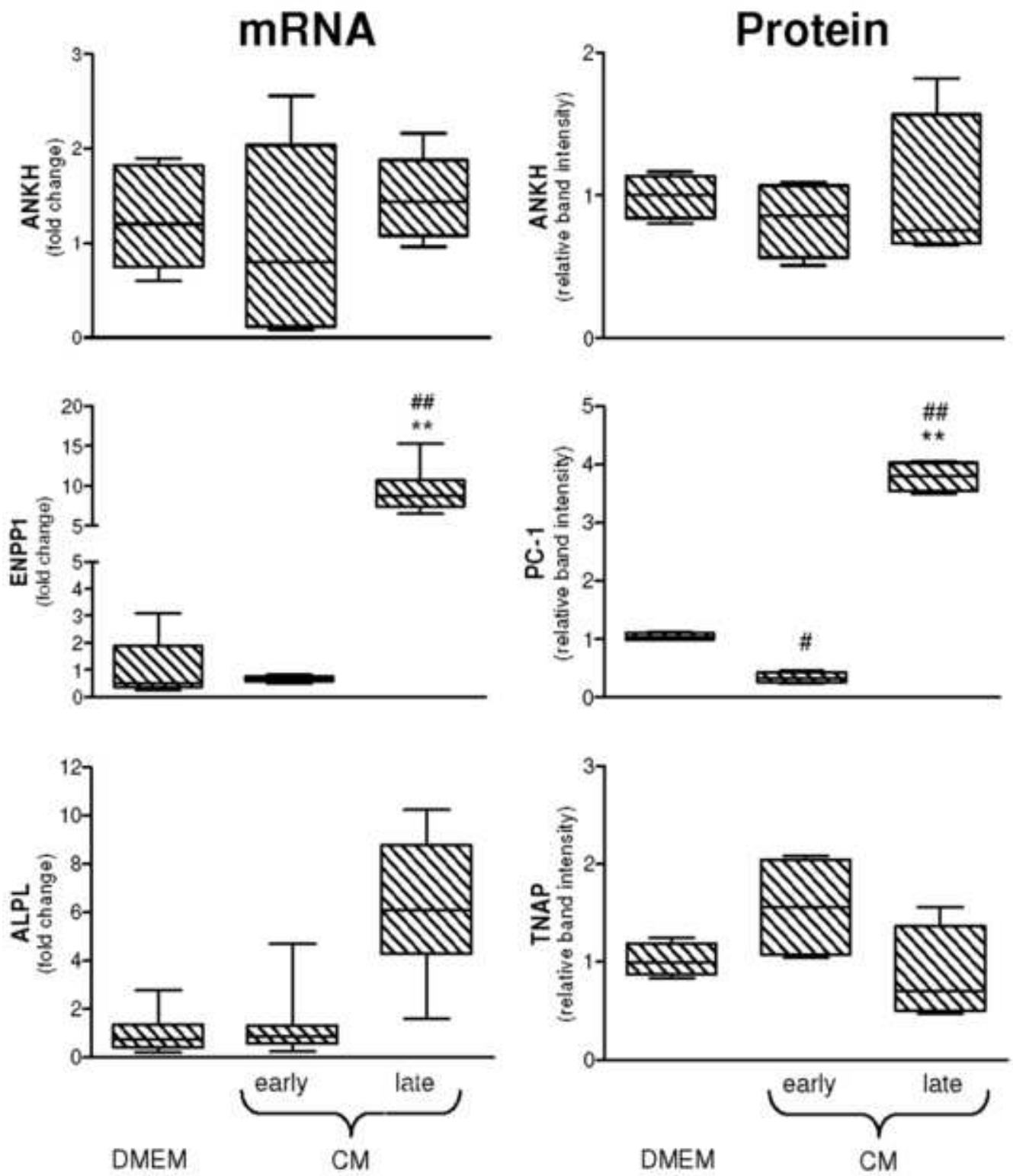


Figure 6
[Click here to download high resolution image](#)

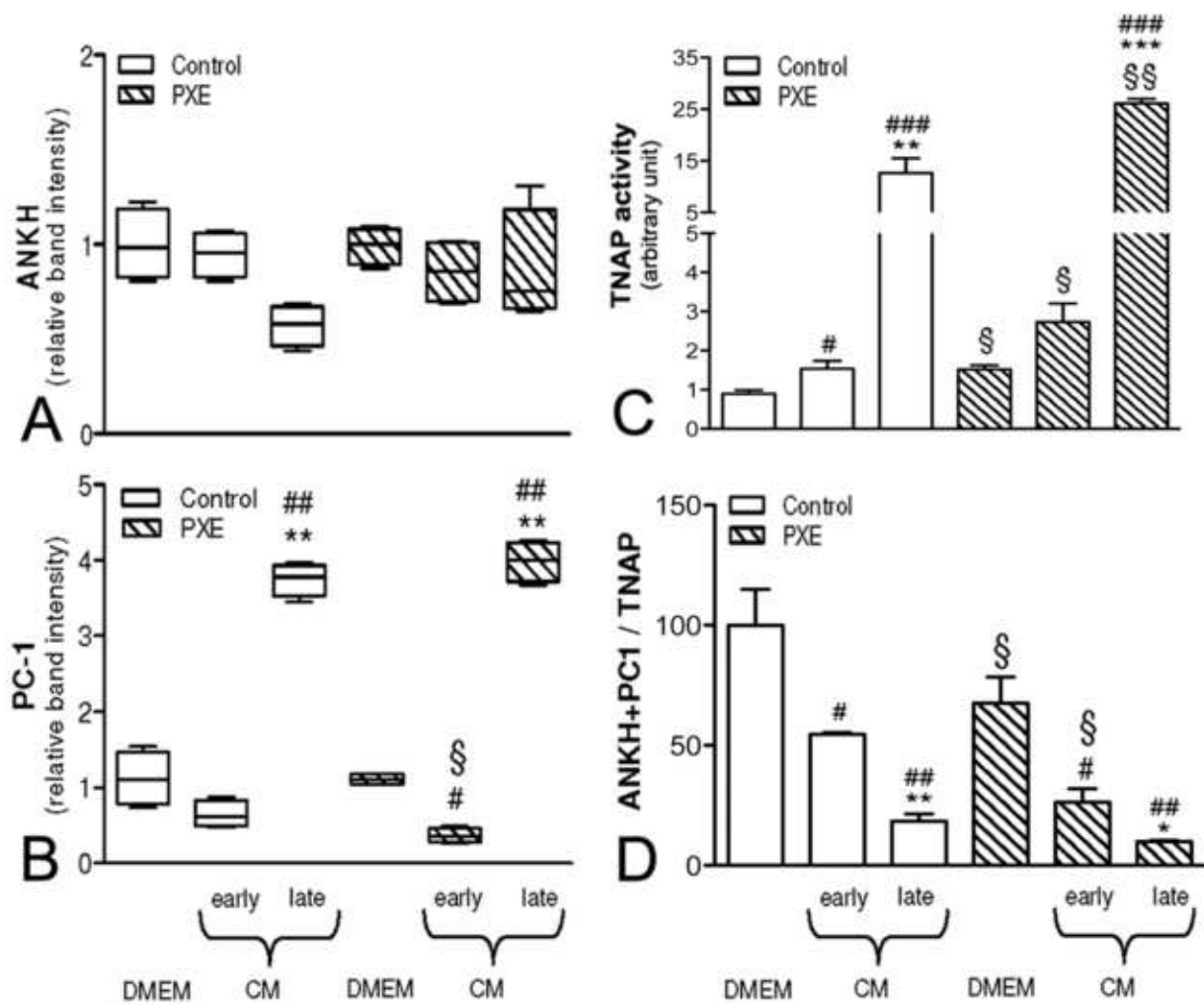


Figure 7
[Click here to download high resolution image](#)

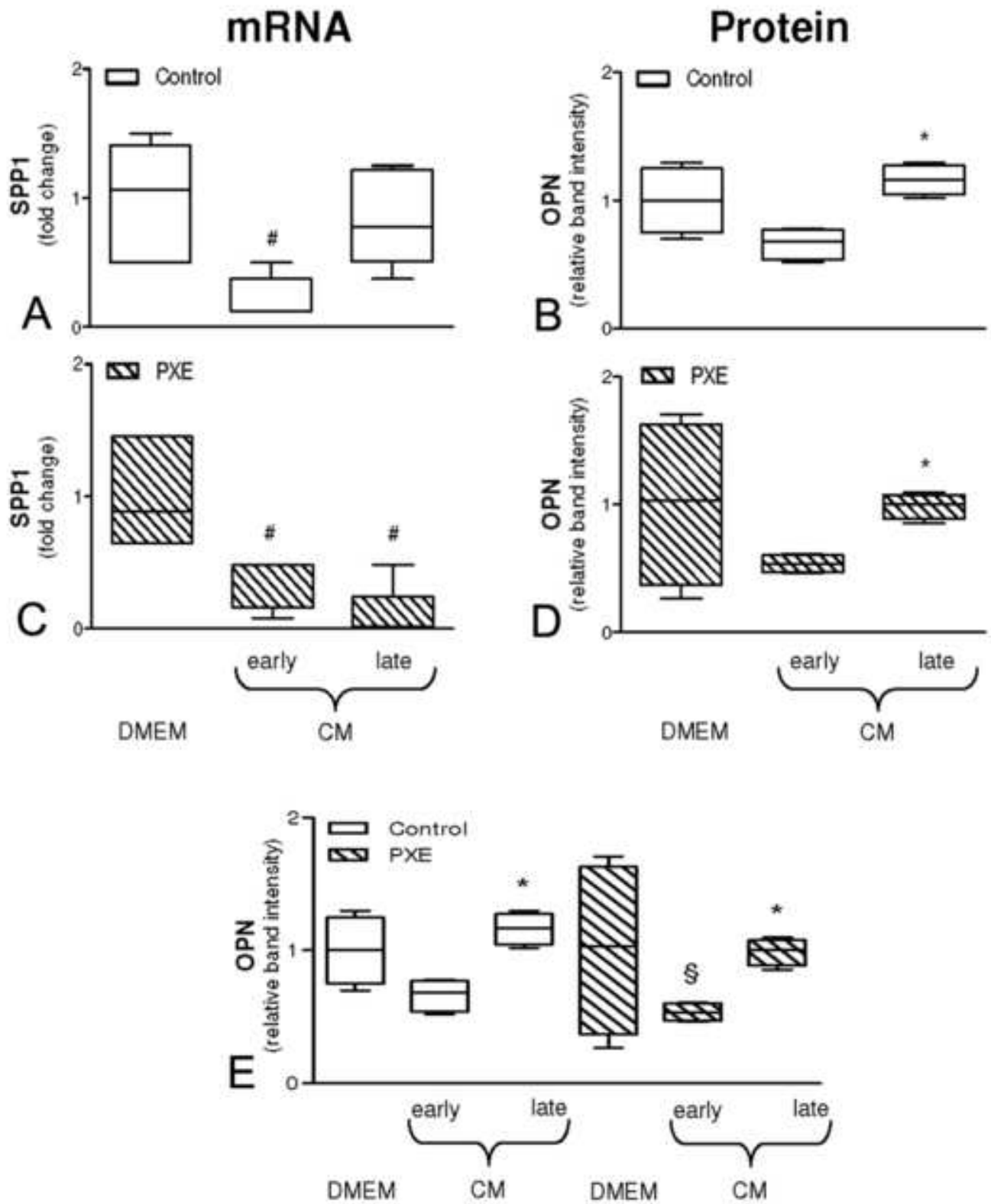


Table 1

TABLE 1. Primes used for Real Time Polymerase Chain Reaction

Gene	positions	Sequence 5'- 3'	Tm	%GC	slope	E%	R ²
ALPL forward reverse	1044-1066 1108-1131	TACAAGCACTCCCCTTCATCTG GCTCGAAGAGACCCAATAGGTAGT	60	47 50	-3.353	98.7	0.915
ANKH forward reverse	2268-2289 2327-2351	CACATGGCCGTACAAAGAGATG GTGTGGAGTAGATGGTTTCGAACTC	60	50 48	-3.426	95.8	0.920
ENPP1 forward reverse	2107-2129 2166-2192	CCGTGGACAGAAATGACAGTTTC ATGGACAGGACTAAGAGGAATTCTAAA	60	47 37	-3.207	105	0.989
SPP1 forward reverse	325-342 398-415	CTCCTAGCCCCACAGAAT GGTCATGGCTTTCGTTGG	60	56 48	-3.432	95.6	0.955
CLK2 forward reverse	1295-1313 1374-1394	GCACCATAGCACCATTGTC GCAGCCTATACTCCACACATC	60	52 52	-3.354	98.7	0.978