

This is the peer reviewed version of the following article:

Managing Road Safety through the Use of Linked Data and Heat Maps / Colacino, Vincenzo Giuseppe; Po, Laura. - 129475:(2017), pp. 1-8. ( 7th International Conference on Web Intelligence, Mining and Semantics, WIMS 2017 ita 2017) [10.1145/3102254.3102273].

Association for Computing Machinery

*Terms of use:*

The terms and conditions for the reuse of this version of the manuscript are specified in the publishing policy. For all terms of use and more information see the publisher's website.

01/05/2026 14:32

(Article begins on next page)

# Managing Road Safety through the Use of Linked Data and Heat Maps

Vincenzo Giuseppe Colacino  
“Enzo Ferrari” Engineering Department  
University of Modena and Reggio Emilia  
Via Vivarelli,10  
Modena, Italy 41125  
67032@studenti.unimore.it

Laura Po  
“Enzo Ferrari” Engineering Department  
University of Modena and Reggio Emilia  
Via Vivarelli,10  
Modena, Italy 41125  
laura.po@unimore.it

## ABSTRACT

Road traffic injuries are a critical public health challenge that requires valuable efforts for effective and sustainable prevention. Worldwide, an estimated 1.2 million people are killed in road crashes each year and as many as 50 million are injured. An analysis of data provided by authoritative sources can be a valuable source for understanding which are the most critical points on the road network. The aim of this paper is to discover data about road accidents in Italy and to provide useful visualization for improving road safety. Starting from the annual report of road accidents of the Automobile Club of Italy, we transform the original data into an RDF dataset according to the Linked Open Data principles and connect it to external datasets. Then, an integration with Open Street Map allows to display the accident data on a map. Here, the final user is able to identify which road sections are most critical based on the number of deaths, injuries or accidents.

## CCS CONCEPTS

• **General and reference** → **General conference proceedings; Experimentation**; • **Information systems** → **Ontologies; Geographic information systems; Web searching and information discovery; Data extraction and integration; Resource Description Framework (RDF); Query languages for non-relational engines**; • **Human-centered computing** → **Information visualization; Geographic visualization; Visualization toolkits**; • **Applied computing** → **E-government; Transportation**;

## KEYWORDS

Linked Open Data, LOD, OWL, RDF, data integration, road accident rate, road fatalities, map, visualization, heat map, geographic visualization

### ACM Reference format:

Vincenzo Giuseppe Colacino and Laura Po. 2017. Managing Road Safety through the Use of Linked Data and Heat Maps. In *Proceedings of WIMS '17, Amantea, Italy, June 19-22, 2017*, 8 pages.

Permission to make digital or hard copies of all or part of this work for personal or classroom use is granted without fee provided that copies are not made or distributed for profit or commercial advantage and that copies bear this notice and the full citation on the first page. Copyrights for components of this work owned by others than ACM must be honored. Abstracting with credit is permitted. To copy otherwise, or republish, to post on servers or to redistribute to lists, requires prior specific permission and/or a fee. Request permissions from [permissions@acm.org](mailto:permissions@acm.org).

WIMS '17, June 19-22, 2017, Amantea, Italy

© 2017 Association for Computing Machinery.

ACM ISBN 978-1-4503-5225-3/17/06...\$15.00

<https://doi.org/10.1145/3102254.3102273>

<https://doi.org/10.1145/3102254.3102273>

## 1 INTRODUCTION

Road traffic injuries claim more than 1.2 million lives each year worldwide and slightly over 25 thousand within the European Union<sup>1</sup>. Road accidents are the leading cause of death among young people, and cost governments approximately 3% of GDP [14]. Of all the systems with which people have to deal every day, road traffic systems are the most complex and the most dangerous. The road death toll in 2014 was more than 23 times the total number of fatalities in rail and air transport combined. Increasing the safety in transport is also one of the priority identified by the European Commission for H2020 projects<sup>2</sup>. Actually, the European Commission has adopted an ambitious *Road Safety Programme*<sup>3</sup> which aims to cut road deaths in Europe in half between 2010 and 2020.

The evaluation of the risk of losing one's live in a road traffic accident is best expressed as a ratio of the number of fatalities per billion vehicle-kilometers. Unfortunately, the traffic performance is not available for all EU country. Therefore, the ratio per million inhabitants has been taken as a proxy by the EU Commission. The number of traffic accidents per million inhabitants for each European country and the European average number are reported in Figure 1. In Italy, the road safety is in line with the average situation in Europe (56.4 fatalities per million inhabitants in 2016 as reported Figure 1). Road traffic accidents decreased by 17% between 2010 and 2015. However, from 2013 till 2015 this downward trend has come to a standstill as the total number of fatalities registered in 2014 and 2015 remained at the same level as in 2013<sup>4</sup>.

The use of technology to improve safety is one major goal of future smart cities. Finding and display accurate road accidents data, see the year-to-year evolution on a road map can be a strategic decision-making tool for local public administrators to increase the road network safety.

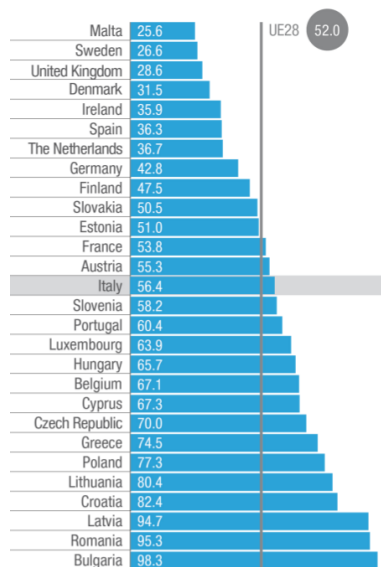
The aim of the paper is twofold. Firstly, we want to identify accurate and punctual data about Italian road accidents and deliver these information in a way that is machine readable, easily accessible and reusable. Linked Open Data (LOD) principles can be a solution for standardization and a method of publishing structured data using standard Web technologies. Secondly, we focus on providing

<sup>1</sup>The data concerns the statistics of the 2014 available at [http://ec.europa.eu/eurostat/statistics-explained/index.php/Road\\_safety\\_statistics\\_at\\_regional\\_level](http://ec.europa.eu/eurostat/statistics-explained/index.php/Road_safety_statistics_at_regional_level)

<sup>2</sup>[https://ec.europa.eu/transport/themes/research/horizon2020\\_en](https://ec.europa.eu/transport/themes/research/horizon2020_en)

<sup>3</sup>[http://europa.eu/rapid/press-release\\_MEMO-10-343\\_en.htm](http://europa.eu/rapid/press-release_MEMO-10-343_en.htm)

<sup>4</sup>These data are delivered by CARE, the European centralized database on road accidents, and are available at <https://tinyurl.com/ybvtvzw2>



**Figure 1: Number of fatalities per million inhabitants in 2016 in EU28.**

**Source: European Transport Safety Council (ETCS) annual PIN report. Year 2016.**

good visualizations that allow a better understanding of factors that affect the crash occurrence and severity.

For this reason, we developed an application that displays street heat maps able to highlight which road sections are more critical. On a map users could easily deduce information such as if motorways are safer than secondary roads, which streets are safer in a defined area, which paths are more secure traveling from city A to city B, where should administrations focus for improving the quality of road infrastructure, and so on.

The implementation process has been divided into four steps:

- (1) Data collection
- (2) Ontology creation
- (3) Integration
- (4) Data visualization

Section 2 will introduce some related work, then we will describe the datasets of interest in Section 3. Section 4 describes the process of refinement of a road accident dataset according to the Linked open data principles. The integration with other datasets and the visualization of the information on street heat maps are shown respectively in Section 5 and 6. Section 7 reports our conclusion and insights for future improvements.

## 2 RELATED WORK

The need to explore and analyze transport data is reflected in several actions and research efforts in the computer science community.

Smart mobility solutions have been developed with aim at reducing congestion and fostering faster, greener and cheaper transportation options. Among these solutions, we find systems that use advances in wireless networking and sensor technologies for preventing or automatically detecting incidents [10, 11]. The huge

amount of data about movement of vehicles provided by GPS and RFID can also be used for creating interactive visual analytics dashboard [8], for monitoring road safety [6], for increasing the understanding of road accidents [4], and also for predicting road accidents based on historical data [7].

On the other hand, the production of RDF data requires capable tools. In literature, we found Linked Data Integration Framework (LDIF)<sup>5</sup> [12] and Open Data Clean Store (ODCS) [9] that are able to manage the entire process of cleaning, linking, assessing the quality and provenance of data and providing aggregated views.

## 3 DATA COLLECTION

In our project, firstly, we focused on the identification of datasets of interest. A deep analysis on the data quality and granularity of each data source available has been conducted to verify if they could contribute to the project. Two national datasets that collect information on road traffic fatalities are analyzed: ISTAT and ACI. LingedGeoData and GeoNames have been studied for the creation of links to external sources. In the end, OpenStreetMap has been investigated to produce street heat map visualizations of the data.

### 3.1 The ISTAT statistics

In Italy, ISTAT, the Italian National Institute of Statistics (Istituto nazionale di statistica) collects data on all traffic accidents occurred on roads open to public traffic, in which at least one person was killed or injured and in which at least one moving vehicle was involved. The Police officers who arrive at the site of the accident are responsible for filling the appropriate official, structured form and for sending it to ISTAT. Information on ISTAT includes time and place of the accident, characteristics of the vehicles involved, sex and age of drivers, injured passengers and pedestrians.

The ISTAT statistics are organized per regions and provinces from 2001 to 2014. The main limitation of the dataset is the granularity of the data. The information about accidents are grouped by region. Therefore, it is not possible to have a precise view of the data, i.e. to know on what street the major accidents have occurred. This limitation is not present in the ACI dataset, which is illustrated in the following.

### 3.2 The ACI open data

The ACI, Automobile Club of Italy (Automobile Club d'Italia), is a non-profit public organization, which institutionally represents and protects the general interests of Italian motoring.

The ACI missions are twofold:

- *Protecting all aspects of mobility*: by adapting to the needs of the automotive world, in all its environmental, social and economic forms. ACI provides protection, experience and professionalism to citizens in defending the right to mobility;
- *Spreading a new car culture*: by promoting and disseminating a new approach to mobility, that highlight the responsibilities of each citizen and pushes towards ethical and sustainable attitudes of moving.

<sup>5</sup><http://ldif.wbssg.de/>

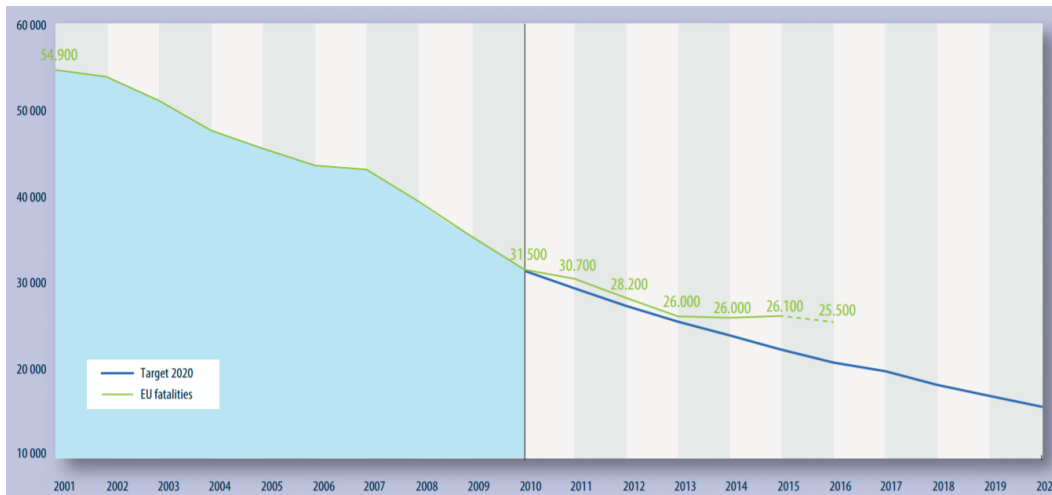


Figure 2: Road fatalities in the EU since 2001. Source: CARE (EU road accidents database).

Table 1: An example of the ACI data

cReg	Region	cProv	Province	Code	Street Name	cCom	Municipality	Inc	IM	Mor	Fer
8	Emilia-Romagna	35	Reggio Emilia	SS35801	SS 358 - di Castelnuovo	35029	Poviglio	11	0	0	16
8	Emilia-Romagna	35	Reggio Emilia	SS46701	SS 467 - di Scandiano	35012	Casalgrande	7	0	0	11
8	Emilia-Romagna	35	Reggio Emilia	SS46701	SS 467 - di Scandiano	35033	Reggio Nell'Emilia	6	0	0	7

The ACI annual report shows the number of road accidents, deaths and injuries happened on each road at the provincial or municipal level, as well as other specific characteristics, such as type of vehicles, presence of heavy vehicles or two-wheelers, time slot, month. These statistical data are available as ODS (OpenDocument Spreadsheet) files and are freely usable by anyone under the Creative Commons CC-BY 3.0 license<sup>6</sup>. A temporal classification, by month, day, time, and a spatial classification, by province, municipality and region are also provided.

In Table 1, a sample of the ACI report is shown. The “cReg”, “cProv” and “cCom” fields identify, respectively, the region, the province and the municipality according to the ISTAT classification, while fields “Inc”, “IM”, “Mor” and “Fer” represent the number of accidents, fatal accidents, fatalities and injuries. These data depict the situation of accidents in each street within a municipality.

For the project, we used the spatial data classification of the ACI dataset available for the period 2011-2014. In particular we focus our analysis on the Emilia-Romagna region, even if the implemented process can be replicated for the entire dataset.

### 3.3 OpenStreetMap

OpenStreetMap (OSM)<sup>7</sup> is a collaborative project that aim to create a free editable map of the world. The maps are created by using data from portable GPS devices, aerial photography and other free sources. Registered users can upload and edit the vector data by using a number of editing tools developed by the OSM community.

The OSM dataset is available for downloading under a Creative Commons Attribution-ShareAlike 2.0 license.

The OSM dataset is represented by a simple data model based on three basic geographic entities: nodes, ways and relations. Each entity is uniquely identified by a numeric id, moreover:

- Nodes represent geographic points on earth with a latitude and longitude;
- Ways are ordered sequences of nodes. Depending on whether the first node equals the last one, a way is called closed or open, respectively. Closed ways are used to represent buildings or land areas.
- Relations relate nodes, ways and potentially other relations to each other, thereby forming complex objects. Each entity participating in a relation plays a certain role in it. Example of relations are multipolygons.

```
{ "geometry":
{"type": "LineString",
"coordinates": [[11.2804662, 44.4561406], [11.280274, 44.456404],
[11.2800449, 44.4566743],[11.2797546, 44.4569773],
[11.2795855, 44.4571394], [11.2792561, 44.4574083],
[11.2789046, 44.4576858], [11.2787963, 44.4577598]]},
"type": "Feature",
"id": "way/4057576", "properties":
{"changeset": "21067544", "maxspeed": "130",
"lanes": "3", "uid": "893327",
"timestamp": "2014-03-12T16:47:32Z", "oneway": "yes",
"lit": "no", "version": "30", "int_ref": "E_35",
"toll": "yes", "source:maxspeed": "IT:motorway",
"ref": "A1", "id": "way/4057576", "highway": "motorway",
"name": "Autostrada del Sole" }
```

Listing 1: The json file section representing a motorway road on OpenStreetMap

<sup>6</sup><https://creativecommons.org/licenses/by/3.0/it/>

<sup>7</sup><https://www.openstreetmap.org/>

An example of a road section described by OSM is reported in listing 1.

The OSM data can be accessed, queried and edited by using a REST API, which basically uses HTTP GET, PUT and DELETE requests. REST API has limitations in terms of the amount of data that may be required in a single query. We made use of the open database *geofabrik.de*, a service that extracts and collects free geodata from OpenStreetMap, to extract the road network of the Emilia-Romagna region. In the geofabrik database, the informations about a country are collected in one single large file. The geographical information are provided by a series of tags that identify the type of entity described, for example a road accessible by vehicles is identified with the “highway” tags. By using Osmfilter, a free tool provided by OSM and by entering latitude and longitude that characterized the Emilia-Romagna boundaries, we were able to extract the road network of the region of interest.

### 3.4 LinkedGeoData

LinkedGeoData<sup>8</sup>[13] uses the information collected by the OpenStreetMap project and makes it available as an RDF knowledge base according to the Linked Data principles. The LinkedGeoData data set is a large spatial knowledge base which has been derived from Open Street Map. The last version has been released in January 2016 with more than 1.2 billion triples based on the OpenStreetMap full planet file of November 2015.

### 3.5 GeoNames

The GeoNames<sup>9</sup> geographical database covers all countries in the world and contains over eleven million placenames. The GeoNames database is available and accessible through various web services and it is also available for download in a daily database export. It is free of charge under a creative commons attribution license. It contains over 10 million geographical names and consists of over 9 million unique features whereof 2.8 million populated places and 5.5 million alternate names. Each feature of the database is represented as a web resource identified by a stable URI, that provides access, to the HTML page, or the RDF (Resource Description Framework) description of the feature. Features are categorized into one out of nine feature classes and further subcategorized into one out of 645 feature codes.

GeoNames is integrating geographical data such as names of places in various languages, elevation, population and others from various sources. All lat/long coordinates are in the standard WGS84 (World Geodetic System 1984). Users may manually edit, correct and add new names using a user friendly wiki interface.

Linking the ACI dataset to GeoNames is unavoidable in order to create a proper 5-stars dataset.

## 4 REALIZING A 5-STAR DATASET

This section explains the modeling principles we followed in order to refine the ACI dataset according to the 5-star deployment scheme for the Linked Open Data proposed by Berners-Lee[3].

The first star necessitates providing data available on the Web. The second star asks to structure the published data. The third

star requires to use a non-proprietary open format. The fourth star demands to use URIs to denote things. The fifth star claims to link your data to other datasets to provide context.

Looking at the star system, the original ACI dataset was credited as a three stars for the open license, the structured and non-proprietary format. In the new version, the use of URIs and the links to other external data grant the fourth and fifth star.

We call the new dataset “ACI 5-stars dataset”. This is an RDF dataset that contains all the original statistical data published as open data by ACI.

In the first subsection, we describe the structure of the ACI statistics that has been modeled through an ontology. In the second subsection, we elucidate the choice of links to connect the new dataset to the LOD cloud.

### 4.1 Ontology Creation

The data and vocabulary of the ACI 5-stars dataset are designed to facilitate use, re-usability, and interoperability. To promote uptake, querying the data should be as straightforward as possible. For this reason, the core of the model is a direct translation of the structure of the statistics in the ACI dataset, intuitive names are chosen for properties and classes.

For the creation of the ontology we used a renowned ontology editor called Protégé<sup>10</sup>. The locations are organized according to the ISTAT classification for administrative units such as regions, provinces, municipalities. The dataset contains the road accident statistics collected and published by ACI from 2011 to 2014.

As depicted in Figure 5, the defined classes of the ACI ontology are:

- “Place” which is a location connected to the GeoNames and Dbpedia via the “owl:sameas” property. It has three subclasses: “Region”, “Province”, “Municipality”; the property “is\_in” is used to connect two places, for example the municipality of Modena “is\_in” the province of Modena which “is\_in” the Emilia-Romagna region.
- “Street” which refers to a street in the ACI dataset;
- “Section” which refers to a street section in the ACI dataset, each Section can be linked to a Way in the LinkedGeoData. Since section in the ACI dataset does not exactly match the instances of LinkedGeoData we used the “skos:related” property to connect these instances;
- “Data” which collects all instances of each data related to a particular street with the property “of\_road”, and to a specific municipality, with the property “in\_municipality”.

The metrics of the ontology created are shown in Figure 6.

Currently, the ACI 5-stars dataset is stored locally<sup>11</sup>, we are working to use OpenLink Virtuoso<sup>12</sup> as a triple store and SPARQL query service.

### 4.2 Links to the LOD cloud

In order to achieve the fifth star, the new dataset must be connected to the LOD cloud with links to external knowledge sources.

<sup>8</sup><http://linkedgeodata.org/>

<sup>9</sup><http://www.GeoNames.org/>

<sup>10</sup><http://protege.stanford.edu/>

<sup>11</sup> Available at <http://dbgroup.ing.unimore.it/~po/ACI-5stars.owl>

<sup>12</sup><http://virtuoso.openlinksw.com/>

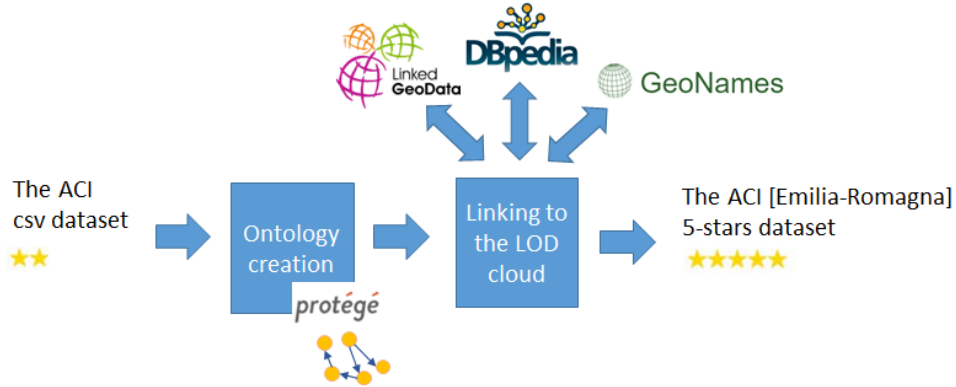


Figure 3: The ACI dataset refinement process.

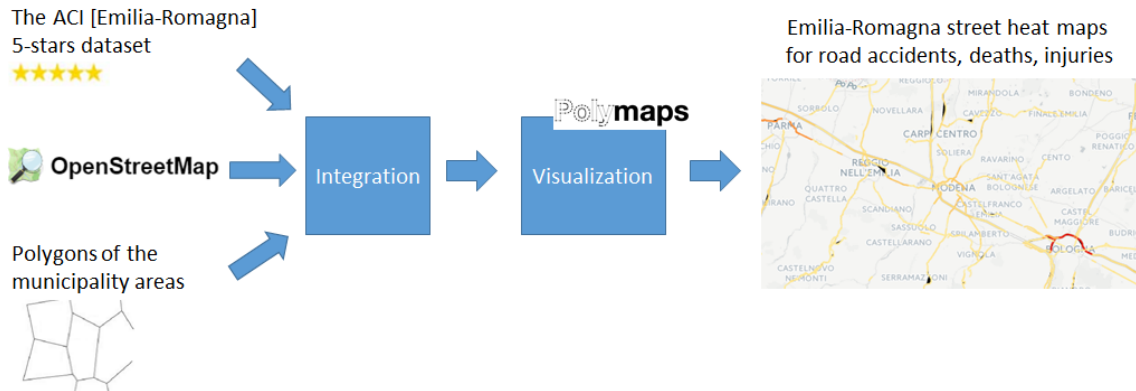


Figure 4: The integration and visualization of the ACI dataset.

Actually, we have performed the connection with external resources by linking each place in the dataset to the corresponding URI in GeoNames. The *owl:sameAs* has been used to connect the instances. The linking process is not finished yet. We are searching

for other datasets that might be a good connection for the ACI 5-stars dataset.

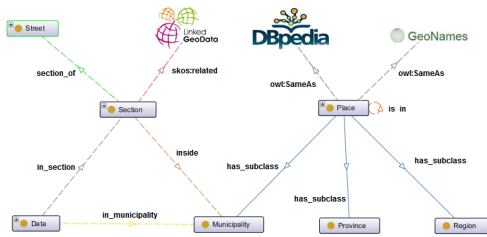


Figure 5: The ACI ontology.

Ontology metrics:	
Metrics	
Axiom	155122
Logical axiom count	134163
Declaration axioms count	20953
Class count	10
Object property count	9
Data property count	10
Individual count	20930
Annotation Property count	2

Figure 6: The ACI ontology metrics.

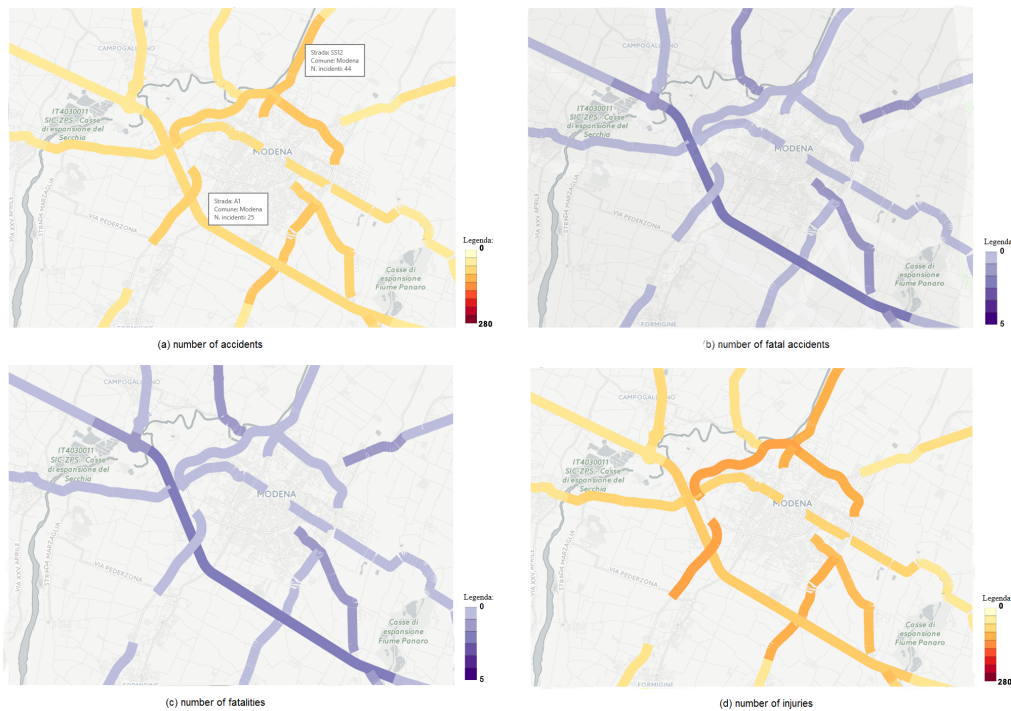


Figure 7: Road accident statistics in the area around the city of Modena in 2014.

## 5 INTEGRATION

The visualization of road accidents statistics as a street heat map is possible only if the ACI and OSM data are joined together. Several problems arise during the integration of the two datasets.

Firstly, the data on the ACI dataset regard statistics on road sections within municipalities, while the data about streets on OSM are not split for the different municipalities. To deal with this issues, we add polygons describing the boundaries of the municipalities in the integration process (see Figure 4). We mapped each street in OSM to its municipality, then we cut the street routes in different portions according to the municipality boundaries and we assigned for each street portion the respective municipality. In the end, we obtained the OSM data enriched with the municipality feature.

The second issue regards a conflict when mapping street codes from the ACI to the OSM dataset. These inconsistencies were caused by a renaming process that affects some streets in Italy. On the ACI dataset (lastly updated in 2014), some roads appears with an “old” identification name that differ from the one in OSM. This was caused by some renaming procedures that affect streets during the years. Luckily, for some streets, OSM report the historical/old name in the “old\_name” field. For each street in the ACI dataset a python script was run to check if there were corresponding streets in OSM (by looking at both current and old street names), in the end, it returns a list of “old” ACI roads. Some of them are not present in OSM (roughly the 5%) and some other match the old street name in OSM (roughly the 10%). We manually solved the missing streets by looking at additional sources like wikipedia and ISTAT.

In the end, the integration is solved by merging the ACI statistics with the geographic data of OSM streets split for each municipality. ACI statistics are obtained by querying the ACI 5-stars dataset. In listing 2, the query used to extract the accident statistics of 2014 is shown. For each street code and municipality, it reports the number of accidents, fatal accidents, fatalities and injuries.

```

PREFIX rdf: <http://www.w3.org/1999/02/22-rdf-syntax-ns#>
PREFIX xsd: <http://www.w3.org/2001/XMLSchema#>
PREFIX onto: <http://www.semanticweb.org/ACI/ontologies/onto\ACI#>
PREFIX rdfs: <http://www.w3.org/2000/01/rdf-schema#>
PREFIX owl: <http://www.w3.org/2002/07/owl#>

SELECT ?street_code ?municipality
  (sum(distinct(?num_accidents)) as ?accidents)
  (sum(distinct(?num_fatal_accidents)) as ?fatal_accidents)
  (sum(distinct(?num_fatalities)) as ?fatalities)
  (sum(distinct(?num_injuries)) as ?injuries)
WHERE {
  ?d onto:in_section ?s;
  onto:accidents ?num_accidents;
  onto:fatal_accidents ?num_fatal_accidents;
  onto:fatalities ?num_fatalities;
  onto:injuries ?num_injuries;
  onto:in_municipality ?c;
  onto:of_year '2014.
  ?s_onto:section_of_?street.
  ?_?street_onto:has_code_?street_code.
  ?_?c_onto:has_name_?municipality
}
group_by_?street_code_?municipality
order_by_desc(?injuries)

```

Listing 2: The SPARQL query performed on the ACI LOD dataset for retrieving accident statistics happening in 2014

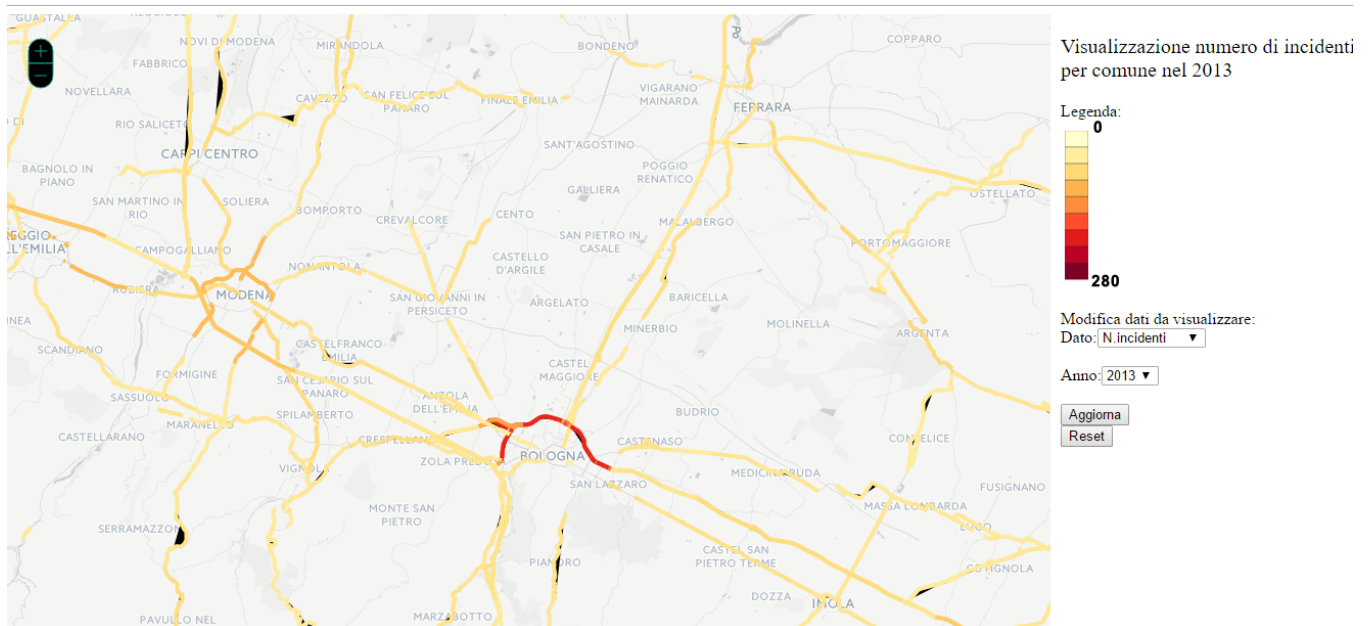


Figure 8: Accident rate visualizations on a map.

## 6 DATA VISUALIZATION

Information Visualization is defined as “The use of computer supported, interactive, visual representations of abstract data to amplify cognition”[5]. Heat maps use color as a data visualization tool. A street heat map refers to map visualization with color streets representing a 3rd dimension.

We developed our application<sup>13</sup> to visualize the most critical sections on the road traffic network of the Emilia-Romagna region. The application, as shown in Figure 8, presents a map where a street’s heat is a function of the number of road accidents it is characterized by.

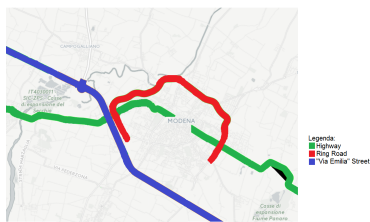


Figure 9: The main roads around the city of Modena.

We performed data visualization through Polymaps<sup>14</sup>, a JavaScript library for making dynamic, interactive maps that can be displayed in browsers. With Polymaps, it is possible to set colors for routes and paths according to the data coming from the ACI dataset; the visualization is displayed in an HTML page containing a map of the Emilia-Romagna region. Figure 8 shows an example of visualization

<sup>13</sup> A prototype of the visual application is available at <http://dbgroup.ing.unimore.it/trafficaccidents>.

<sup>14</sup> <http://polymaps.org/>

obtained from the query shown in listing 2. As it can be seen, the street network of the region is colored with different colors on different road sections. From yellow to orange and red to indicate the increasing rate of accidents on each road section.

Figure 7 gives insights of how we can analyze a particular area by using the four street heat maps of the corresponding statics (number of accidents, fatal accidents, fatalities, injuries). By clicking on the colored streets in the map (as shown in Figure 7 part (a)), the name of the street is shown. To aid in understanding, we have also reported a map of the main roads around the city of Modena in Figure 9. This Figure highlights the highway, the ring road and on one of the main streets, called “Via Emilia”, that cross the city center. Looking at Figure 7 part (a), it is easy to recognize that we have less accidents on the highway and on “Via Emilia” than on the ring road around Modena. However the number of fatal accidents (Figure 7 part (b)) is higher on the highway than on the ring road or “via Emilia” street. This means that, even if the accidents on the ring road happens more often than on the highway, they are of less gravity and the persons involved are not seriously injured. Indeed, looking at part (c) and (d) of the same Figure, we see that we have more fatalities on the highway, while the number of injured persons is higher on the ring road around the city.

## 7 CONCLUSION AND FUTURE WORK

This paper has reported the process to refine a road accident open dataset into a Linked Open Data version and a procedure to display these data through the visualization of street heat maps. The produced ACI 5-stars dataset can be easily queried and integrated with other data thanks to its interlinks with external knowledge sources. The heat map visualization application is a useful tool to identify which road sections are most critical based on the number

of deaths, injuries or accidents. It might be used by citizen and also by public authorities to analyze the road accident issues and undertake appropriate actions.

Lots of work remain undone. The process should be apply on the entire national ACI dataset, in order to produce a complete dataset and to provide a national visualizations of road accident statistics.

Moreover, the integration and visualization can be refined by adding useful indicators, such as the ratio of the number of fatalities per billion vehicle-kilometers or, in an approximation, if the traffic performance is not available at local level, the ratio per million inhabitants.

Exposing a SPARQL endpoint and providing navigation and visual querying functionalities allows all kind of users to query the ACI 5-stars dataset[1, 2].

## REFERENCES

- [1] Fabio Benedetti, Sonia Bergamaschi, and Laura Po. 2015. Visual Querying LOD sources with LODeX. In *Proceedings of the 8th International Conference on Knowledge Capture, K-CAP 2015, Palisades, NY, USA, October 7-10, 2015*. 12:1–12:8. <https://doi.org/10.1145/2815833.2815849>
- [2] Fabio Benedetti, Laura Po, and Sonia Bergamaschi. 2014. A Visual Summary for Linked Open Data sources. In *Proceedings of the International Semantic Web Conference ISWC 2014 Posters & Demo Track, Riva del Garda, Italy, October 21, 2014*. 173–176. [http://ceur-ws.org/Vol-1272/paper\\_136.pdf](http://ceur-ws.org/Vol-1272/paper_136.pdf)
- [3] Tim Berners-Lee. 2006. Linked Data. <http://www.w3.org/DesignIssues/LinkedData.html>. (2006). Accessed: 2017-04-30.
- [4] German Bravo C. 2014. Risk Maps Generation for Road Accidents: The Application Architecture and Functionality. In *IEEE 79th Vehicular Technology Conference, VTC Spring 2014, Seoul, South Korea, May 18-21, 2014*. IEEE, 1–5. <https://doi.org/10.1109/VTCSpring.2014.7023172>
- [5] Stuart K. Card, Jock D. Mackinlay, and Ben Shneiderman (Eds.). 1999. *Readings in Information Visualization: Using Vision to Think*. Morgan Kaufmann Publishers Inc., San Francisco, CA, USA.
- [6] Anuja Dangol, Valerie Dewaelheyns, and Thérèse Steenberghen. 2016. Why Geospatial Linked Open Data for Smart Mobility?. In *21st International Conference on Urban Planning, Regional Development and Information Society, REAL CORP 2016, Hamburg, Germany, 22-24 June 2016. Proceedings*, Manfred Schrenk, Vasily V. Popovich, Peter Zeile, Pietro Elisei, and Clemens Beyer (Eds.). 803–819.
- [7] Rupa Jagannathan, Sanja Petrovic, Gavin Powell, and Matthew Roberts. 2013. Predicting Road Accidents Based on Current and Historical Spatio-temporal Traffic Flow Data. In *Computational Logistics - 4th International Conference, ICCL 2013, Copenhagen, Denmark, September 25-27, 2013. Proceedings (Lecture Notes in Computer Science)*, Dario Pacino, Stefan Voß, and Rune Møller Jensen (Eds.), Vol. 8197. Springer, 83–97. [https://doi.org/10.1007/978-3-642-41019-2\\_7](https://doi.org/10.1007/978-3-642-41019-2_7)
- [8] Tin Seong Kam, Ketan Barshikar, and Shaun Tan. 2012. DIVAD: A Dynamic and Interactive Visual Analytical Dashboard for Exploring and Analyzing Transport Data. *International Journal of Computer, Electrical, Automation, Control and Information Engineering* 6, 11 (2012), 1353 – 1358.
- [9] Tomás Knap, Martin Necaský, and Martin Svoboda. 2012. A Framework for Storing and Providing Aggregated Governmental Linked Open Data. In *Advancing Democracy, Government and Governance - Joint International Conference on Electronic Government and the Information Systems Perspective, and Electronic Democracy, EGOVIS/EDEM 2012, Vienna, Austria, September 3-6, 2012. Proceedings (Lecture Notes in Computer Science)*, Andrea Ko, Christine Leitner, Herbert Leitold, and Alexander Prosser (Eds.), Vol. 7452. Springer, 264–270. [https://doi.org/10.1007/978-3-642-32701-8\\_23](https://doi.org/10.1007/978-3-642-32701-8_23)
- [10] Assil Ksikisi, Saeed Al Shehhi, and Rashad Ramzan. 2015. Intelligent Traffic Alert System for Smart Cities. In *2015 IEEE International Conference on Smart City/SocialCom/SustainCom 2015, Chengdu, China, December 19-21, 2015*. IEEE Computer Society, 165–169. <https://doi.org/10.1109/SmartCity.2015.65>
- [11] Otilia Popescu, Sarwar A. Sha-Mohammad, Hussein M. Abdel-Wahab, Dimitrie C. Popescu, and Samy El-Tawab. 2017. Automatic Incident Detection in Intelligent Transportation Systems Using Aggregation of Traffic Parameters Collected Through V2I Communications. *IEEE Intell. Transport. Syst. Mag.* 9, 2 (2017), 64–75. <https://doi.org/10.1109/MITS.2017.2666578>
- [12] Andreas Schultz, Andrea Matteini, Robert Isele, Christian Bizer, and Christian Becker. 2011. LDIF : Linked Data Integration Framework. [http://iswc2011.semanticweb.org/fileadmin/iswc/Papers/PostersDemos/iswc11pd\\_submission\\_49.pdf](http://iswc2011.semanticweb.org/fileadmin/iswc/Papers/PostersDemos/iswc11pd_submission_49.pdf)
- [13] Claus Stadler, Jens Lehmann, Konrad Höffner, and Sören Auer. 2012. Linked-GeoData: A Core for a Web of Spatial Open Data. *Semant. web* 3, 4 (Oct. 2012), 333–354. <http://dl.acm.org/citation.cfm?id=2590208.2590210>
- [14] L'IV Com Sàrl and Villars sous Yens. 2015. *Global status report on road safety 2015*. Technical Report. World Health Organization. [www.who.int](http://www.who.int)