

This is the peer reviewed version of the following article:

Mineralization by mesenchymal stromal cells is variously modulated depending on commercial platelet lysate preparations / Boraldi, Federica; Burns, Jorge S.; Bartolomeo, Angelica; Dominici, Massimo; Quaglino, Daniela. - In: CYTOTHERAPY. - ISSN 1465-3249. - 20:3(2018), pp. 335-342. [10.1016/j.jcyt.2017.11.011]

Terms of use:

The terms and conditions for the reuse of this version of the manuscript are specified in the publishing policy. For all terms of use and more information see the publisher's website.

26/04/2026 10:22

(Article begins on next page)

Mineralization by mesenchymal stromal cells is variously modulated depending on commercial platelet lysate preparations

01 FEDERICA BORALDI¹, JORGE S. BURNS^{2,3}, ANGELICA BARTOLOMEO¹,
02 MASSIMO DOMINICI^{2,3} & DANIELA QUAGLINO¹

03
04
05
06
07 ¹Department of Life Sciences, University of Modena and Reggio Emilia, Modena, Italy, ²Laboratory of Cellular
08 Therapies, Department of Medical and Surgical Sciences for Children & Adults, University Hospital of Modena and
09 Reggio Emilia, Modena, Italy, and ³Fondazione Democenter-Sipe, Tecnopolo Mirandola—TPM, Science and
10 Technology Park for Medicine, Modena, Italy

Abstract

11
12
13 *Background aims.* Numerous cellular models have been developed to investigate calcification for regenerative medicine ap-
14 plications and for the identification of therapeutic targets in various complications associated with age-related diseases. However,
15 results have often been contradictory due to specific culture conditions, cell type ontogeny and aging status. Human plate-
16 let lysate (hPL) has been recently investigated as valuable alternative to fetal bovine serum (FBS) in cell culture and bone
17 regeneration. A parallel comparison of how all these multiple factors may converge to influence mineralization has yet to
18 be reported. *Methods.* To compare mineralization of human mesenchymal cell types known to differ in extracellular matrix
19 calcification potency, bone marrow-derived mesenchymal stromal cells and dermal fibroblasts from neonatal and adult donors,
20 at both low and high passages, were investigated in an *ex vivo* experimental model by supplementing the osteogenic induc-
21 tion medium with FBS or with hPL. Four commercial hPL preparations were profiled by liquid chromatography/
22 electrospray ionization quadrupole time-of-flight spectrometry, and mineralization was visualized by von Kossa staining and
23 quantified by morphometric evaluations after 9, 14 and 21 days of culture. *Results.* Data demonstrate that (i) commercial
24 hPL preparations differ according to mass spectra profiles, (ii) hPL variously influences mineral deposition depending on
25 cell line and possibly on platelet product preparation methods, (iii) donor age modifies mineral deposition in the presence
26 of the same hPL and (iv) reduced *in vitro* proliferative capacity affects osteogenic induction and response to hPL. *Conclu-*
27 *sion.* Despite the standardized procedures applied to obtain commercial hPL, this study highlights the divergent effects of
28 different preparations and emphasizes the importance of cellular ontology, donor age and cell proliferative capacity to op-
29 timize the osteogenic induction capabilities of mesenchymal stromal cells and design more effective cell-based therapeutic
30 protocols.

31
32 **Key Words:** *aging, bone marrow stromal cells, calcification, fibroblasts, platelets, regenerative medicine*

33
34 Mineralization is a physiological process in hard
35 connective tissues but can also be considered patho-
36 logical when occurring in soft connective tissues.
37 Although extensively characterized in *ex vivo*-expanded
38 populations of mesenchymal stromal cells (MSCs),
39 many facets related to osteogenic induction remain
40 elusive [1,2]. Despite the ability to differentiate into
41 calcifying osteoblasts *in vivo*, MSCs fail to differen-
42 tiate and mineralize the extracellular matrix (ECM)
43 in standard medium supplemented with fetal bovine
44 serum (FBS). Therefore, to induce a temporal cascade
45 of maturational stages toward the osteoblast pheno-
46 type that allows ECM mineralization [3], cells must
47 be cultured in osteogenic induction medium (OIM,

52 which contains β -glycerophosphate, ascorbic acid and
53 dexamethasone) [4]. More recently, because plate-
54 lets contribute to mineralization in both physiological
55 and pathological microenvironments, influencing sites
56 for mineral nucleation [5] and providing growth factors
57 [6] as well as exosomal mediators [7], it has been
58 shown that platelet-rich plasma can efficiently promote
59 healing of hard and soft connective tissues, improv-
60 ing, for instance, bone regeneration in clinical trails
61 [8]. Therefore, the fractured platelet derivative human
62 platelet lysate (hPL) is increasingly favored as an FBS
63 replacement for regenerative medicine clinical appli-
64 cations [9]. However, hPL sources and platelet product
65 preparation methods can influence platelet number,

50 Correspondence: Daniela Quaglino, PhD, Department of Life Sciences, University of Modena and Reggio Emilia, Via Campi 287, 41125 Modena, Italy. E-mail:
51 daniela.quaglino@unimore.it

(Received 21 August 2017; accepted 22 November 2017)

growth factor concentration and, consequently, osteogenic induction/differentiation outcomes [10–12]. Moreover, because individual hPL effectiveness can differ according to donor-specific variability (i.e., age, gender), anticoagulant (i.e., heparin) and storage [11,13], commercial platelet lysates derived from pooled donors are frequently used to improve consistency and lower batch variability [14,15]; nevertheless, divergent results may be observed.

Therefore, we have investigated the effect of different commercial platelet lysates on *ex vivo* mineralization comparing various mesenchymal cell types (human bone marrow [hBM]-MSCs versus human dermal fibroblasts), each with contrasting ECM mineralization propensities. In particular, human MSCs are multipotent progenitors with enormous potential for repair and regeneration of bone and cartilage. Although these cells can be isolated from a variety of tissues, those from bone marrow, being the most widely investigated and characterized [16], were used in the present study as representative of cells positively associated with efficient mineralization. Conversely, human dermal fibroblasts (HDFs) are mesenchymal cells derived from tissues that typically mineralize in pathologic conditions [17].

Moreover, calcification can be also influenced by functional changes related to donor age or reduced cell proliferation capability. For instance, replicative senescence in hBM-MSC cultures can impair bone progenitor osteogenic differentiation and, consequently, matrix mineralization [18]. Yet replicative senescence can enhance ECM calcification in soft connective tissue mesenchymal cells (i.e., smooth muscle cells, fibroblasts) by increasing the response to pro-mineralization stimuli. By contrast, studies on HDFs isolated from neonatal donors demonstrated that these cells are significantly less responsive to pro-osteogenic factors [19]. Higher incidence of mineralization-associated diseases, including either osteoporotic paucity of bone mineralization or aberrant calcification in soft connective tissues and atherosclerotic vasculature [20], is consistently associated with age.

The aim of this study was to evaluate whether (i) different commercial hPLs have the same influence on mineral deposition in different cell lines, (ii) reduced *in vitro* proliferative capacity affects mineral deposition upon hPL supplementation and (iii) donor age modifies mineral deposition in the presence of the same hPL.

Methods

Liquid chromatography/electrospray ionization quadrupole time-of-flight mass spectrometry analysis

Electrospray ionization quadrupole time-of-flight (ESI-Q-TOF) accurate mass spectrometer (G6520A, Agilent

Technologies), controlled by MassHunter (v. B.04.00) and interfaced with an HPLC-Chip Cube to an Agilent 1200 nano-pump was used for analysis.

Chromatographic separation was performed on an integrated HPLC-Chip (Agilent Technologies) with a 75- μ m ID, 43 mm, 300 Å C18 column, before a de-salting step through a 40-nL trap column. The injected sample (1 μ L) was loaded onto the trap column with a 4 μ L/min 0.1% FA:ACN (98:2) phase flow, and after 3 min, the pre-column was switched inline with the nanoflow pump (400 nL/min, phase A: water:ACN:FA 96.9:3:0.1, phase B: ACN:water:FA 94.5:5:0.1), equilibrated in 10% mobile phase B. Proteins were eluted from the reverse phase column through the following gradient: 10–90% mobile phase B for 5 min, held in 90% mobile phase B for 5 min and switched back to 10% mobile phase B for 3 min, for a total runtime of 40 min, including a 10-min post-run reconditioning step.

Mass spectra were recorded from 350 to 3200 m/z at scan rates of 1 Hz; the detector was operated at 2 GHz in extended dynamic range mode. Mass spectra were automatically recalibrated with two reference mass ions. Spectra were displayed and processed by the software MassHunter Qualitative Analysis (B05.00, Agilent Technologies).

Mass spectra across the whole chromatogram (0–26 min) were averaged and, after subtracting the background (obtained by averaging the mass spectra at the end of the run), the spectrum was deconvoluted by using the maximum entropy algorithm in the range of 10 000–150 000 Da.

Cell culture

hBM-MSCs were harvested from a 42-year-old male donor after informed consent, according to the Declaration of Helsinki and local ethical committee-approved procedures for isolation and immunophenotypic characterization, as previously described [16,21]. Briefly, cells were routinely grown in α -minimum essential medium (MEM) without nucleosides (Gibco Invitrogen), supplemented with 8% hPL (obtained from pooled batches of 50 donors), 1% L-glutamine (Gibco Invitrogen), 1 UI/mL heparin (Sigma-Aldrich), and 10 mg/mL ciprofloxacin (HIKMA) [16]. In this study, hBM-MSCs were selected among those obtained from six independent donors as representative of the behavior of hBM-MSCs. HDFs from adult tissue (aHDFs; Thermo Fisher Scientific, cat. # C-013-5C). To evaluate whether hPL can reverse the “resistant phenotype” of cells considered to be “low responders” to pro-osteogenic stimuli, we also used HDFs derived from neonatal tissue (nHDFs; Thermo Fisher Scientific, cat. # C-004-5C) [19].

HDFs were grown in Dulbecco's Modified Eagle Medium (DMEM) supplemented with 10% FBS (Gibco-Thermo Fisher Scientific) according to standard procedures [22].

Cell expansion

Cell expansion represents a preliminary step necessary to obtain the required number of cells at different passages (i.e., low and high) to be used for the mineralization assay. Cells (hBM-MSCs, nHDFs and aHDFs) were serially passaged in T25 flasks in their growth medium as specified in the previous paragraph. The number of population doublings (PD) for each cell type was determined. In particular, cell number was measured by hemocytometer, and PD was calculated using the following formula [23]:

$$PD = \text{Ln}(\text{number of cells harvested}) - \text{Ln}(\text{number of cells seeded})/\ln 2.$$

Cells at low passage (p3) were used when the number of PD was $\approx 3 \pm 1$ in all cell lines. Cells at high passages were used when hBM-MSCs, nHDFs and aHDFs were at p10, p40 and p30, respectively, and PD was $\approx 1 \pm 0.2$. Cell cultures were monitored using an inverted phase contrast microscope (Leica DM-IL).

Ex vivo mineralization assay

For mineralization experiments, cells seeded in 24-well plates at a density of 40×10^3 cells/well (DB Falcon), were treated with an OIM containing DMEM supplemented with ascorbic acid (50 $\mu\text{g}/\text{mL}$; Sigma), β -glycerophosphate (10 mmol/L) (Sigma) and dexamethasone (10 nmol/L ; Sigma) and 10% FBS [3,24,25] or with FBS replaced by 8% or 5% commercial hPL, depending on the manufacturer's recommendation. Change from FBS- to hPL-containing OIM was well tolerated without cell toxicity. Because hPL and pro-mineralization reagents present in the OIM may influence proliferation rate [26,27], in a preliminary experiment, we tested various commercial hPLs on hBM-MSCs during the expansion phase. After 6 days of culture, cell number was 185 000, 273 000, 228 000 and 301 000 cells, depending on the commercial hPL used. Therefore, to allow a more uniform comparison, mineralization assessment was performed on cells expanded in their medium until confluence, as previously described.

As hPL sources, we used the following: two Stemulate liquid formulas produced by Cook Medical, one preparation requiring heparin (hPL1) and the other heparin-free (hPL2); a Good Manufacturing Practice-grade hPL liquid formula produced by Macopharma requiring the addition of heparin (hPL3); and a lyophilized formula, Lyset, produced by Sclavo

Diagnostics International, which is supplemented with anticoagulant by the manufacturer (hPL4).

Mineralization can be assessed by alizarin red (AR) or by von Kossa (VK) staining. Although AR is accepted as indicative of the presence of calcium phosphate deposits, it is a nonspecific stain for acid insoluble divalent complexes and does not specifically stain calcium-containing minerals or calcium itself [28,29]. Therefore, mineralization was assessed by VK, a precipitation reaction in which silver ions react with phosphate and, under ultraviolet light, silver is deposited to replace the reduced calcium of calcium phosphate [30]. Briefly, after 9, 14 and 21 days in OIM, cells were fixed in 4% paraformaldehyde, stained with 2.5% silver nitrate, placed under a ultraviolet lamp for 30 min and rinsed with distilled water before treatment with 5% sodium thiosulfate for 2 min. VK-positive (dark) deposits were observed after alcohol washes.

Areas of mineralization were quantified on digital images by ImageJ software. Triplicate experiments were performed twice.

Statistical analysis

Statistical comparison was made using GraphPad software, version 6.0, and P values < 0.05 were considered significant. Statistical significance between treatments and time of culture in the same cell line was determined using two-way analysis of variance followed by Tukey's multiple comparison test. Independent t -tests were used to compare cells at low and high passages with the same time in culture and with the same OIM. Values are shown as mean values \pm SEM.

Results

Mass spectra indicated differences between hPL commercial sources

The complex protein mixtures of four hPLs were analyzed by ESI-Q-TOF without gel separation and digestion. For all samples, a broad range of peaks showing intensities < 0.5 across the selected 10 000 to 150 000 m/z range and a prominent base peak of intensity > 1.5 between m/z ratios 66 440 to 66 557 (Figure 1). Interestingly, there was notable heterogeneity in number and peak intensities among the hPLs. For instance, hPL3 and hPL4 exhibited a peak at 76 102 and at 109 559 m/z , whereas hPL1 and hPL2 did not (Figure 1).

Effect of different commercial hPL on hBM-MSC-dependent mineralization

In line with expectations from previous studies [16], treatment of hBM-MSCs with OIM led to a

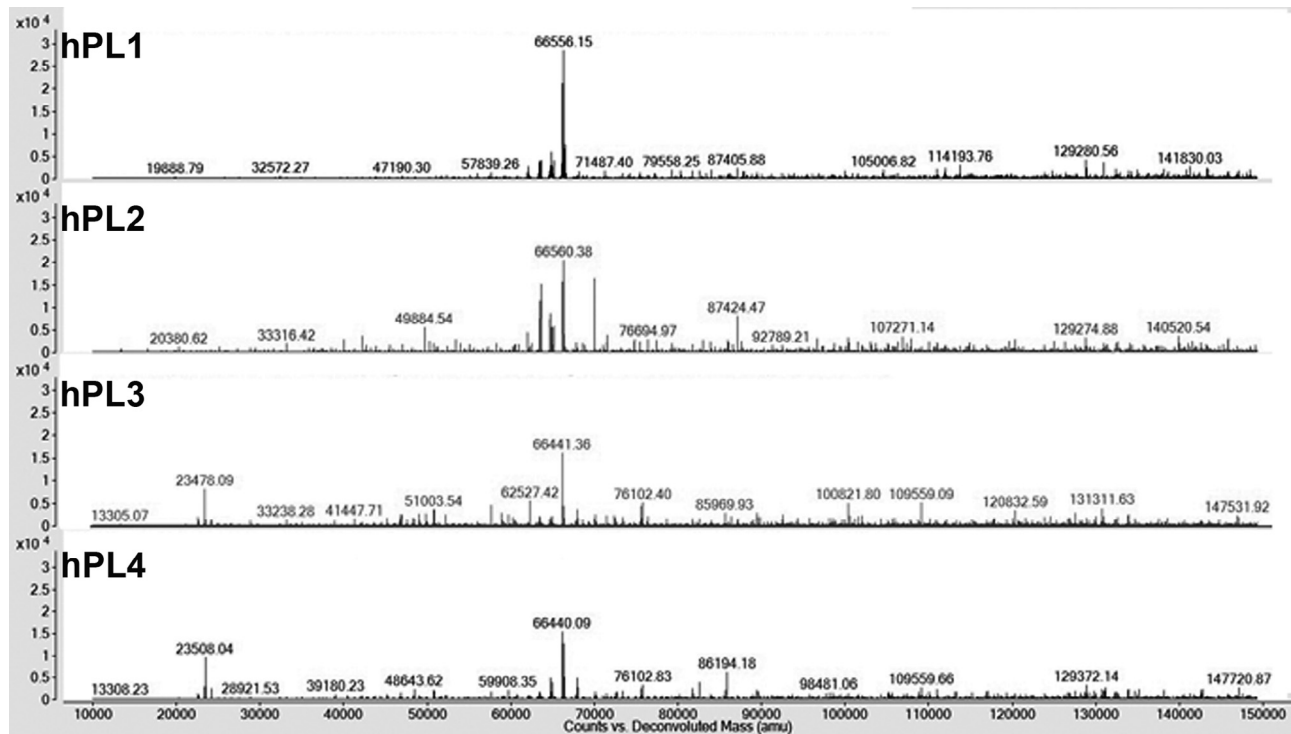


Figure 1. Liquid chromatography (LC)/ESI-Q-TOF profiling. Representative LC-mass spectrometry spectra of m/z intensities for peptides ranging from 10 to 150 kDa from four commercial hPL preparations. Each hPL was characterized by a specific peak profile indicating composition differences.

progressive increase of VK staining from 9 to 21 days. For OIM supplemented with hPL3 or hPL4, VK staining was >40% of the cellular monolayer at 14 days and >90% at 21 days (Figure 2). In the same cells, when OIM was supplemented with FBS, hPL1 or hPL2, VK staining was significantly ($P < 0.001$) reduced at 14 days compared with other hPL treatments. A similar trend was observed also at 21 days, when only 20% of the cellular monolayer appeared stained (Figure 2).

Effect of different commercial hPL on HDF-dependent mineralization

The overall pattern of calcification evidenced by VK staining of HDF cultures (Figure 2) was very different compared with that seen in hBM-MSCs. In particular, in aHDF cultures, VK staining at 9 and 14 days was similar for OIM supplemented with either FBS or any of the hPL sources (Figure 2). At 21 days, the only evident staining was in the presence of FBS and hPL1, although it never exceed 20% of the monolayer area.

In nHDFs, the use of FBS or hPL4 did not result in any appreciable calcification because VK staining was observed only at 21 days using hPL1, hPL2 and hPL3, although hPL3 demonstrated more than twice the extent of VK staining as that seen using hPL1 or hPL2.

Notably, in the same experimental condition (e.g., OIM with hPL4), the mineralized area measured in aHDFs and nHDFs was different (Figure 2), indicating that donor age influenced cellular behavior. Similar behavior was also observed with other hPLs.

Continuous passaging influences the response to osteogenic stimuli

Several studies investigated the effect of cellular senescence on osteogenic differentiation potential, but results often disagreed with each other, probably due to differing experimental conditions [20,31]. Because replicative senescence causes an increase in cell death that can affect the extent of mineral deposition, we decided to investigate the influence of different commercial hPL preparations on aging cells (i.e., cells at high passages exhibiting significantly reduced proliferation capabilities). To exclude interindividual variability, the same cell line was aged *in vitro* through serial passages, as described in Methods, and these cells were therefore compared at low and high passages.

hBM-MSCs in OIM supplemented with FBS, hPL1 and hPL2 did not differ in their deposition of minerals over time compared with cells at low passage. In the presence of hPL3 or hPL4, the amount of the mineralized area was markedly decreased at 14 days ($\approx 4\%$ at high passage versus $\approx 50\%$ at low passage;

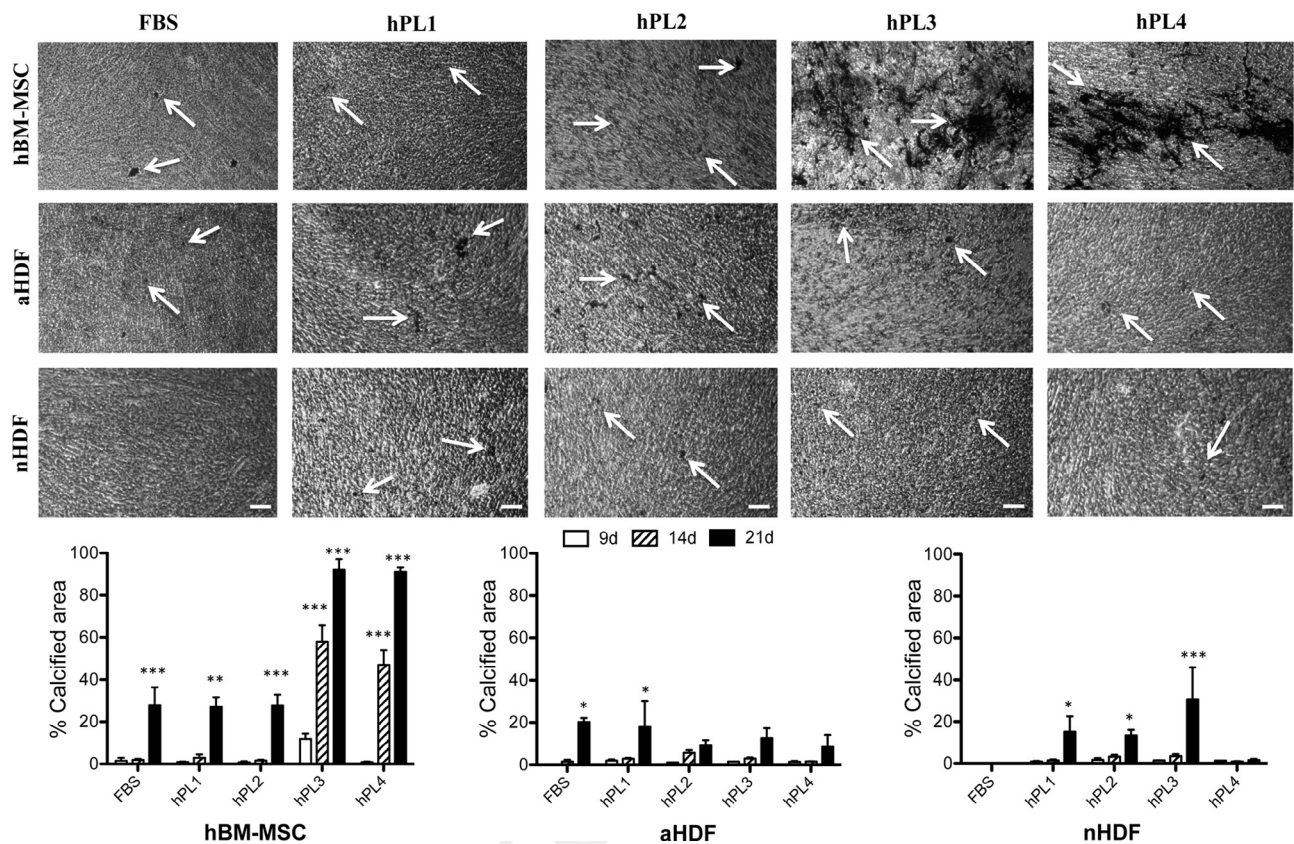


Figure 2. Calcification assay at low cell passage. Phase contrast photomicrographs of hBM-MSCs and HDFs, derived from either adult (aHDF) or neonatal (nHDF) tissues, cultured in osteogenic induction medium supplemented for 14 days with FBS or with four different commercial hPL preparations. Mineral deposits were visualized with VK staining (arrows). Bar: 120 μ m. The percentage of calcified areas in hBM-MSCs, nHDFs and aHDFs cultured for 9, 14 and 21 days are shown in histograms. Results are expressed as mean values \pm SEM. * $P < 0.05$; ** $P < 0.01$; *** $P < 0.001$ 21 days versus 14 days or 14 days versus 9 days in the same cell line and with the same OIM composition.

$P < 0.001$), although calcification reached similar values at 21 days ($\approx 84\%$ versus $\approx 91\%$ at high and low passage, respectively; Figures 2 and 3).

In aging aHDFs, VK positivity was appreciable at 14 days, especially upon hPL treatments, and at 21 days, the calcified area was $>75\%$ in all experimental conditions (Figures 2 and 3).

Continuously passaged nHDFs did not exhibit significant changes in the amount of minerals deposited over time compared with the same cell line at low passage, thus remaining poorly responsive to pro-osteogenic stimuli. The only exception was hPL3, which led to more than twice the extent of VK staining at 21 days (69% versus 31% at high and low passage, respectively; $P < 0.01$).

Discussion

The need to address the demographic burgeoning of age-related diseases and their complications has increased interest in understanding the processes governing mineralization to improve current therapeutic interventions. However, diverse *ex vivo*

experimental models exploring mineralization has revealed difficulties in comparing results using various cell types and relevant reagents.

In the past decade, hPL has received significant attention for its possible clinical use and for its great effectiveness, compared with FBS, in enhancing MSC osteogenic induction. Interestingly, comparison of four hPLs showed mass spectrometry peak differences indicative of unique aspects to their composition. Identification of single components in each hPL was not within the scope of the present study, but results provide a model for future exploration to better understand which specific hPL sub-components may influence mineralization. Therefore, manufacturers' provision of pooled hPL (as we used in the present study) did not necessarily avoid diverse preparation-specific outcomes, and this likely reflected the complex nature of hPL [32]. In particular, we demonstrated that only two of the four hPLs assessed showed a significant increase of mineralized matrix compared with FBS, indicating that the extent of cell responsiveness can be markedly modulated by the physical-chemical characteristics of an hPL preparation, at least in

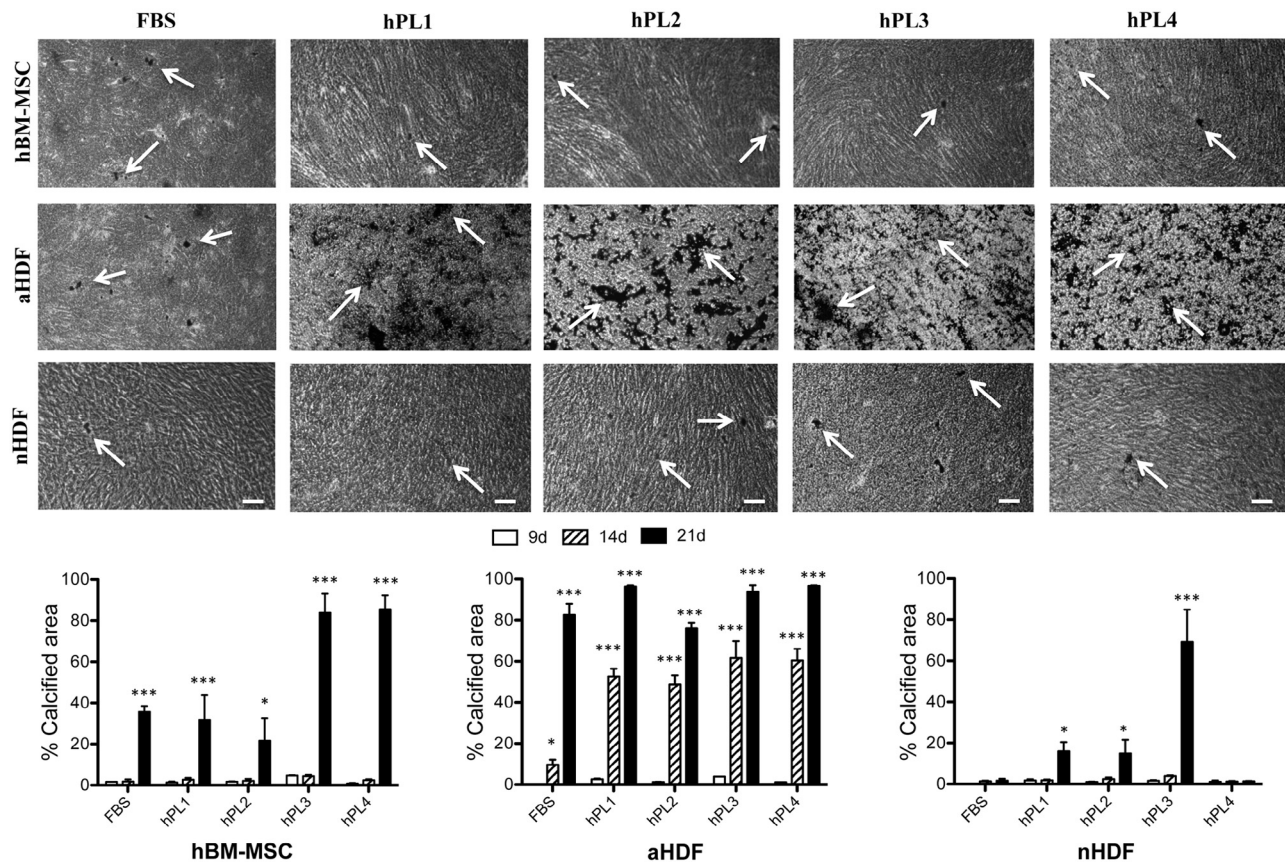


Figure 3. Calcification assay at high cell passage. hBM-MSCs and HDFs, derived from either adult (aHDF) or neonatal (nHDF) tissues, were cultured for 14 days in OIM supplemented with FBS or four different commercial hPL preparations. Mineral deposits were visualized by phase contrast microscopy after VK staining (arrows). Bar: 120 μ m. The percentage of calcified areas in hBM-MSCs, nHDFs and aHDFs cultured for 9, 14 and 21 days are shown in histograms. Results are expressed as mean values \pm SEM. * $P < 0.05$; *** $P < 0.001$ 21 days versus 14 days or 14 days versus 9 days in the same cell line and with the same OIM composition.

hBM-MSCs, a mesenchymal cell type that has been extensively studied in cell culture [33] and was selected as a suitable positive control of efficient mineralization because of its high osteogenic differentiation potency. Moreover, within this context, we tested three liquid hPL forms (hPL1, hPL2 and hPL3) with differing heparin requirements versus a dry lyophilized form (hPL4) that was rehydrated before use. Heparin, a sulphated glycosaminoglycan that prevents fibrinogen conversion to fibrin as well as hPL gelatinization in the medium, is not a totally benign component. Low or high doses of heparin, for instance, can oppositely favor osteogenic differentiation [34,35]. The manufacturers of two of the hPLs (hPL1 and hPL3) recommended adding heparin to the culture medium, whereas this was not necessary for fibrinogen-depleted hPL2 or for hPL4, which already contained an anticoagulant. Our ECM calcification outcomes were not related to the requirement for heparin, as shown by near-equivalent results for hPL1 and hPL2. Interestingly, hPL4 was an adequate supplement for prompt mineralization in hBM-MSCs, as

demonstrated by comparing lyophilized hPL4 with the liquid hPL formulas (hPL1, hPL2 and hPL3). Therefore, our data indicate that lyophilization of platelet extract preserves biological activity of growth factors similarly to preparations obtained after freeze-thaw cycles, sonication or activation by thrombin/ CaCl_2 treatment [36].

With regard to the cell-specific response to pro-mineralization stimuli, dermal fibroblasts have been shown to osteogenically differentiate upon transfection of an osteogenic transcription factor [37] or when cultured in an appropriate mineralizing environment [38–41]; however, the degree of similarity between hMSCs and HDFs varies [42–44]. Of note, nHDFs and aHDFs did not mimic the prompt and dense nodular mineralization pattern of hBM-MSCs. These effects were especially evident at 14 days, with differing responses to OIM treatment, supporting the view that environmental conditions (OIM supplemented either with FBS or with one of the four hPLs) exert a different effect on the same cell type and, in addition, that the same experimental condition can induce

a different response depending on the cell type, as seen in both physiological and pathological contexts.

A peculiar feature of nHDFs was the absence of any mineralization over the time course of the experiment when using FBS, confirming previous data [19]. Substituting FBS with hPL led to nHDF-dependent ECM calcification after 21 days in three cases, whereas mineralization remained minimal when OIM was supplemented with hPL4. This does not reflect a functional inadequacy of hPL4 because the preparation supported high levels of mineralization in hBM-MSCs. In particular, hPL4 consisted of lyophilized platelet lysate from platelet-rich plasma combined with human platelet-poor plasma (1:1), and this more comprehensive supplement may have included inhibitors as well as stimulators of mineralization that combine for more cell type specific mineralization [45].

Another important point of this study is that although *in vitro* expansion is necessary to obtain a sufficient cell number for engineering and cell therapy, this requirement, having an effect on the proliferative capacity of each specific cell type, can dramatically affect the osteogenic induction efficiency. This finding was particularly evident in hBM-MSCs and in aHDFs, in which mineral deposition over time was delayed or strongly increased, respectively.

Although it is necessary to better understand the mechanisms mediating the effects of hPL on the mineralization process, this study highlights the importance of defining the production process of commercial hPLs and the release criteria, including concentration ranges of growth factors in hPL batches, so that results can be more easily compared. Additionally, it is also mandatory to take into account cellular ontology, donor age and cell proliferative capacity to optimize the osteogenic induction and design more effective cell-based therapeutic protocols.

Acknowledgments

This study was supported by grant from FCRMO 2015.0306 (FB). The authors acknowledge the “Fondazione Cassa di Risparmio di Modena” for funding the HPLC-ESI-Q-TOF system at the Centro Interdipartimentale Grandi Strumenti (CIGS) of the University of Modena and Reggio Emilia and COST Action CA16115-EuroSoftCalcNet.

Disclosure of interest: The authors have no commercial, proprietary, or financial interest in the products or companies described in this article.

References

[1] Joensuu K, Uusitalo L, Alm JJ, Aro HT, Hentunen TA, Heino TJ. Enhanced osteoblastic differentiation and bone formation in co-culture of human bone marrow mesenchymal stromal

- cells and peripheral blood mononuclear cells with exogenous VEGF. *Orthop Traumatol Surg Res* 2015;101:381–6.
- [2] Boraldi F, Annovi G, Vermeer C, Schurgers LJ, Trenti T, Tiozzo R, et al. Matrix gla protein and alkaline phosphatase are differently modulated in human dermal fibroblasts from PXE patients and controls. *J Invest Dermatol* 2013;133:946–54.
- [3] Lian JB, Stein GS. Development of the osteoblast phenotype: molecular mechanisms mediating osteoblast growth and differentiation. *Iowa Orthop J* 1995;15:118–40.
- [4] Jaiswal N, Haynesworth SE, Caplan AI, Bruder SP. Osteogenic differentiation of purified, culture-expanded human mesenchymal stem cells *in vitro*. *J Cell Biochem* 1997;64:295–312.
- [5] Kawase T, Okuda K, Saito Y, Amizuka N, Suzuki H, Yoshie H. Platelet-rich plasma provides nucleus for mineralization in cultures of partially differentiated periodontal ligament cells. *In Vitro Cell Dev Biol Anim* 2005;41:171–6.
- [6] Bertoldi C, Pinti M, Zaffe D, Cossarizza A, Consolo U, Ceccherelli GB. Morphologic, histochemical, and functional analysis of platelet-rich plasma activity on skeletal cultured cells. *Transfusion* 2009;49:1728–37.
- [7] Torreggiani E, Perut F, Roncuzzi L, Zini N, Baglio SR, Baldini N. Exosomes: novel effectors of human platelet lysate activity. *Eur Cell Mater* 2014;28:137–51.
- [8] Tabrizi R, Karagah T, Shahidi S, Zare N. Does platelet-rich plasma enhance healing in the idiopathic bone cavity? A single-blind randomized clinical trial. *Int J Oral Maxillofac Surg* 2015;44:1175–80.
- [9] Burnouf T, Strunk D, Koh MB, Schallmoser K. Human platelet lysate: replacing fetal bovine serum as a gold standard for human cell propagation. *Biomaterials* 2015;76:371–87.
- [10] Fekete N, Rojewski MT, Lotfi R, Schrenzenmeier H. Essential components for *ex vivo* proliferation of mesenchymal stromal cells. *Tissue Eng Part C Methods* 2014;20:129–39.
- [11] Hemeda H, Giebel B, Wagner W. Evaluation of human platelet lysate versus fetal bovine serum for culture of mesenchymal stromal cells. *Cytherapy* 2014;16:170–80.
- [12] Mazzocca AD, McCarthy MB, Chowanec DM, Cote MP, Romeo AA, Bradley JP, et al. Platelet-rich plasma differs according to preparation method and human variability. *J Bone Joint Surg Am* 2012;94:308–16.
- [13] Lohmann M, Walenda G, Hemeda H, Joussem S, Drescher W, Jockenhoevel S, et al. Donor age of human platelet lysate affects proliferation and differentiation of mesenchymal stem cells. *PLoS ONE* 2012;7:e37839.
- [14] Riordan NH, Madrigal M, Reneau J, de Cupeiro K, Jiménez N, Ruiz S, et al. Scalable efficient expansion of mesenchymal stem cells in xeno free media using commercially available reagents. *J Transl Med* 2015;13:232.
- [15] Schallmoser K, Strunk D. Generation of a pool of human platelet lysate and efficient use in cell culture. *Methods Mol Biol* 2013;946:349–62.
- [16] Veronesi E, Burns JS, Murgia A, Candini O, Rasini V, Mastrolia I, et al. cGMP-compliant transportation conditions for a prompt therapeutic use of marrow mesenchymal stromal/stem cells. *Methods Mol Biol* 2015;1283:109–22.
- [17] Ronchetti I, Boraldi F, Annovi G, Cianciulli P, Quaglino D. Fibroblast involvement in soft connective tissue calcification. *Front Genet* 2013;5:4–22.
- [18] Despars G, Carbonneau CL, Bardeau P, Coutu DL, Beauséjour CM. Loss of the osteogenic differentiation potential during senescence is limited to bone progenitor cells and is dependent on p53. *PLoS ONE* 2013;8:e73206.
- [19] Boraldi F, Bartolomeo A, Di Bari C, Cocconi A, Quaglino D. Donor's age and replicative senescence favour the *in-vitro*

- 564 mineralization potential of human fibroblasts. *Exp Gerontol* 2015;72:218–26. 616
- 565 [20] Shindyapina AV, Mkrtchyan GV, Gneteeva T, Buiuciu S, 617
- 566 Tancowny B, Kulka M, et al. Mineralization of the connective 618
- 567 tissue: a complex molecular process leading to age-related loss 619
- 568 of function. *Rejuvenation Res* 2014;17:116–33. 620
- 569 [21] Fekete N, Rojewski MT, Fürst D, Kreja L, Ignatius A, 621
- 570 Dausend J, et al. GMP-compliant isolation and large-scale 622
- 571 expansion of bone marrow-derived MSC. *PLoS ONE* 623
- 572 2012;7:e43255. 624
- 573 [22] Quaglini D, Boraldi F, Barbieri D, Croce A, Tiozzo R, 625
- 574 Pasquali-Ronchetti I. Abnormal phenotype of in vitro dermal 626
- 575 fibroblasts from patients with pseudoxanthoma elasticum 627
- 576 (PXE). *Biochim Biophys Acta* 2000;1501:51–62. 628
- 577 [23] van der Loo B, Fenton MJ, Erusalimsky JD. Cytochemical 629
- 578 detection of a senescence-associated beta-galactosidase in 630
- 579 endothelial and smooth muscle cells from human and rabbit 631
- 580 blood vessels. *Exp Cell Res* 1998;241:309–15. 632
- 581 [24] Boraldi F, Annovi G, Bartolomeo A, Quaglini D. Fibroblasts 633
- 582 from patients affected by pseudoxanthoma elasticum exhibit 634
- 583 an altered PPI metabolism and are more responsive to pro- 635
- 584 calcifying stimuli. *J Dermatol Sci* 2014;74:72–80. 636
- 585 [25] Buranasinsup S, Sila-Asna M, Bunyaratvej N, Bunyaratvej A. 637
- 586 In vitro osteogenesis from human skin-derived precursor cells. 638
- 587 *Develop Growth Differ* 2006;48:263–9. 639
- 588 [26] Cabral MC, Costa MA, Fernandes MH. In vitro models of 640
- 589 periodontal cells: a comparative study of long-term gingival, 641
- 590 periodontal ligament and alveolar bone cell cultures in the 642
- 591 presence of beta-glycerophosphate and dexamethasone. 643
- 592 *J Mater Sci Mater Med* 2007;18:1079–88. 644
- 593 [27] Riis S, Nielsen FM, Pennisi CP, Zachar V, Fink T. 645
- 594 Comparative analysis of media and supplements on initiation 646
- 595 and expansion of adipose-derived stem cells. *Stem Cells Transl* 647
- 596 *Med* 2016;5:314–24. 648
- 597 [28] Puchtler H, Meloan SN, Terry MS. On the history and 649
- 598 mechanism of alizarin and alizarin red S stains for calcium. 650
- 599 *J Histochem Cytochem* 1969;17:110–24. 651
- 600 [29] Proia AD, Brinn NT. Identification of calcium oxalate crystals 652
- 601 using alizarin red S stain. *Arch Pathol Lab Med* 1985; 653
- 602 109:186–9. 654
- 603 [30] Puchtler H, Meloan SN. Demonstration of phosphates in 655
- 604 calcium deposits: a modification of von Kossa's reaction. 656
- 605 *Histochemistry* 1978;56:177–85. 657
- 606 [31] Banfi A, Muraglia A, Dozin B, Mastrogiacomo M, Cancedda 658
- 607 R, Quarto R. Proliferation kinetics and differentiation potential 659
- 608 of ex vivo expanded human bone marrow stromal cells: 660
- 609 Implications for their use in cell therapy. *Exp Hematol* 661
- 610 2000;28:707–15. 662
- 611 [32] Burnouf T. Modern plasma fractionation. *Transfus Med Rev* 663
- 612 2007;21:101–17. 664
- 613 [33] Digirolamo CM, Stokes D, Colter D, Phinney DG, Class R, 665
- 614 Prockop DJ. Propagation and senescence of human marrow 666
- 615 stromal cells in culture: a simple colony-forming assay identifies 667
- 616 samples with the greatest potential to propagate and 617
- 618 differentiate. *Br J Haematol* 1999;107:275–81. 619
- [34] Simann M, Schneider V, Le Blanc S, Dotterweich J, Zehe V, 620
- 621 Krug M, et al. Heparin affects human bone marrow stromal 622
- 623 cell fate: promoting osteogenic and reducing adipogenic 624
- 625 differentiation and conversion. *Bone* 2015;78:102–13. 626
- [35] Hemeda H, Kalz J, Walenda G, Lohmann M, Wagner W. 627
- 628 Heparin concentration is critical for cell culture with human 629
- 630 platelet lysate. *Cytotherapy* 2013;15:1174–81. 631
- [36] Muraglia A, Todeschi MR, Papait A, Poggi A, Spanò R, Strada 632
- 633 P, et al. Combined platelet and plasma derivatives enhance 634
- 635 proliferation of stem/progenitor cells maintaining their 636
- 637 differentiation potential. *Cytotherapy* 2015;17:1793–806. 638
- [37] Phillips JE, Guldberg RE, Garcia AJ. Dermal fibroblasts 639
- 640 genetically modified to express Runx2/Cbfa1 as a mineralizing 641
- 642 cell source for bone tissue engineering. *Tissue Eng* 643
- 644 2007;13:2029–40. 645
- [38] Junker JP, Sommar P, Skog M, Johnson H, Kratz G. 646
- 647 Adipogenic, chondrogenic and osteogenic differentiation of 648
- 649 clonally derived human dermal fibroblasts. *Cells Tissues* 650
- 651 *Organs* 2010;191:105–18. 652
- [39] Boraldi F, Bartolomeo A, Li Q, Uitto J, Quaglini D. Changes 653
- 654 in dermal fibroblasts from Abcc6(–/–) mice are present before 655
- 656 and after the onset of ectopic tissue mineralization. *J Invest* 657
- 658 *Dermatol* 2014;134:1855–61. 659
- [40] Choi JK, Hwang HI, Jang YJ. The efficiency of the in vitro 660
- 661 osteo/dentinogenic differentiation of human dental pulp cells, 662
- 663 periodontal ligament cells and gingival fibroblasts. *Int J Mol* 664
- 665 *Med* 2015;35:161–8. 666
- [41] Boraldi F, Bartolomeo A, Annovi G, Debet R, Quaglini D. 667
- 668 Magnesium modifies the structural features of enzymatically 669
- 670 mineralized collagen gels affecting the retraction capabilities 671
- 672 of human dermal fibroblasts embedded within this 3D system. 673
- 674 *Materials (Basel)* 2016;9:477. doi:10.3390/ma9060477. 675
- [42] Blasi A, Martino C, Balducci L, Saldarelli M, Soleti A, Navone 676
- 677 SE, et al. Dermal fibroblasts display similar phenotypic and 678
- 679 differentiation capacity to fat-derived mesenchymal stem cells, 680
- 681 but differ in anti-inflammatory and angiogenic potential. *Vasc* 682
- 683 *Cell* 2011;3:5. 684
- [43] Alt E, Yan Y, Gehmert S, Song YH, Altman A, Gehmert S, 685
- 686 et al. Fibroblasts share mesenchymal phenotypes with stem 687
- 688 cells, but lack their differentiation and colony-forming 689
- 690 potential. *Biol Cell* 2011;103:197–208. 691
- [44] Hee CK, Nicoll SB. Differential surface antigen expression 692
- 693 and 1 α ,25-dihydroxyvitamin D3 responsiveness distinguish 694
- 695 human dermal fibroblasts with age-dependent osteogenic 696
- 697 differentiation potential from marrow-derived stromal cells in 698
- 699 vitro. *Cytotherapy* 2011;13:528–38. 700
- [45] Murshed M, McKee MD. Molecular determinants of 701
- 702 extracellular matrix mineralization in bone and blood vessels. 703
- 704 *Curr Opin Nephrol Hypertens* 2010;19:359–65. 705